

## Integrating Mira Connect AV Control Software with Yealink MCore Kits for Microsoft Teams Rooms

The Yealink MCore Kit are certified Microsoft Teams Rooms solutions that include an Yealink MCore processor, a touch panel, and optionally, a camera and other collaboration accessories.

Mira Connect can be integrated with the Yealink MCore Kit by using either the [remote control](#) of a Mira Connect touch panel or, if there is not a separate Mira Connect touch panel, by installing Mira Connect Software directly on the Yealink MCore Kit. In either use case, [WAN](#) access is required for Mira Connect or Mira Connect Software.

Installing Aveo Systems' Mira Connect Software directly on the Yealink MCore Kit transforms the Yealink MCore Kit into an AV control system, adding AV room controls directly to the MCore touch panel using Mira Connect Software's [remote control](#) feature.



**Figure 1:** Aveo Systems' Mira Connect Software can run on the Yealink MCore processor while it operates as a Microsoft Teams Rooms system and can provide access to Mira Connect Software's AV room control user interface through the touch panel.

### Getting Started with Mira Connect Software

Aveo Systems' Mira Connect is an AV control system that controls thousands of devices, communicating with devices over an Ethernet network, RS-232 using a Global Caché IP2SL, infrared (IR) using a Global Caché IP2IR, or with contact closures using a Global Caché IP2CC.

If you are just getting started with Aveo Systems and Mira Connect, please watch our [short training videos](#), review our [technical documents](#), see our [additional resources](#), see our [IT Network Basics for AV Professionals](#) article, and find even more information in the [Mira Connect Administrator's Guide](#).

When controlling devices over RS-232, see the [Global Caché Integration Guide](#) for how to configure a Global Caché IP2SL and review our [RS-232 best practices](#) and [RS-232 troubleshooting](#) articles.



**Figure 2:** Aveo Systems' Mira Connect AV control is used in a variety of applications.

## Integration Overview

If using a Mira Connect appliance, you will use Mira Connect's remote control feature to add room control to the Yealink MCore Kit.

If *not* using a Mira Connect appliance, Aveo Systems' Mira Connect Software can run on the Windows-based Yealink MCore processor and provide the Mira Connect user interface on the Yealink MCore Kit touch panel.

**Note:** Only one of Mira Connect appliance or Mira Connect Software is required to add room controls to the Yealink MCore Kit.

The user interface (UI) is rendered on the touch panel using the Yealink RoomConnect plug-in. The plug-in must first be configured by running the Yealink RoomConnect software and adding the URL of the Mira Connect [remote control](#) feature, as described in this document.



**Figure 3:** To access the Mira Connect user interface, press the Room Controls icon on the Microsoft Teams interface.

To use Mira Connect's remote control feature on the Yealink MCore Kit, you will follow the steps in this document. An overview of the steps is described here:

- If using Mira Connect Software, download and install Mira Connect Software onto the Yealink MCore processor. Once installed, request a pairing code from the Yealink MCore processor's browser to associate the Mira Connect Software with a room configured in Mira Portal, the management platform for Mira Connect. Note that if you are using Mira Connect appliance, you can ignore the sections about installing Mira Connect Software.
- Create a Mira Portal account, set up an organization, site, and room in your Mira Portal dashboard, and then use the pairing code to associate the Mira Connect Software with the room you've created in Mira Portal. Because your account is being used to configure the controls the Mira Connect system, it is considered an *Admin* account.
- Within Mira Portal, add equipment to the room that you want Mira Connect to control. For every product supported by Mira Connect, there is an integration guide that provides step-by-step instructions on how to integrate the product with Mira Connect. Mira Connect Software is free to download from Aveo Systems' website. When you're ready to control actual equipment, a Room License can be purchased.
- Record the Mira Connect remote control URL that shows the user interface in a browser. This URL is needed for a later step. Each room has a unique URL.
- Create a separate Mira Portal account for the Yealink MCore Kit. Other Yealink MCore Kits in the organization or site can also use this same account. Return to your *Admin* Mira Portal account and, at the organization level, add permissions for the Yealink MCore Kit account with *Help Desk* permissions. This level of permissions will allow remote access to the user interface for the Mira Connect Software running on an Yealink MCore Kit but will not allow any changes to be made to your Mira Connect configurations.
- Confirm the latest version of the Yealink RoomConnect plug-in is installed on the Yealink MCore Kit and install the latest Yealink RoomConnect version, if necessary.
- Run the the latest Yealink RoomConnect software on the Yealink MCore processor and add Mira Connect's' Remote Control URL to the Yealink RoomConnect plug-in.

- Customize the visual theme of Mira Connect using Mira Portal to set the Mira Connect background image and menu colors.

The result is that users can press the **Room Controls** button on the Yealink MCore Kit touch panel to access the Mira Connect AV Control user interface and control equipment directly from the Yealink MCore Kit touch panel.

## Detailed Integration Steps

To integrate Aveo Systems' Mira Connect Software with the Yealink MCore Kit system, follow these steps. The steps are detailed in the following sections to make it easy to follow along.

1. [Configure the Yealink MCore Kit](#)
2. [Navigate to the Yealink MCore processor settings](#)
3. [Download Mira Connect Software to the Yealink MCore processor](#)
4. [Install Mira Connect Software](#)
5. [Get a Pairing Code](#)
6. [Add a Room to Mira Portal](#)
7. [Pair Mira Connect Software to the Room in Mira Portal](#)
8. [Add Equipment to the Room](#)
9. [Get the Remote Control URL](#)
10. [Create a Mira Portal account for the Yealink MCore processor user](#)
11. [Assign Permissions to the Yealink MCore processor Mira Portal user account](#)
12. [Download and install the Yealink RoomConnect to the Yealink MCore processor](#)
13. [Add the Mira Connect Remote Control URL to the Yealink RoomConnect application](#)
14. [Test the Room Controls](#)
15. [Add Mira Connect Finishing Touches](#)

### Step 1. Configure the Yealink MCore Kit

Power on the Yealink MCore Kit and configure as necessary with your Microsoft Teams account.

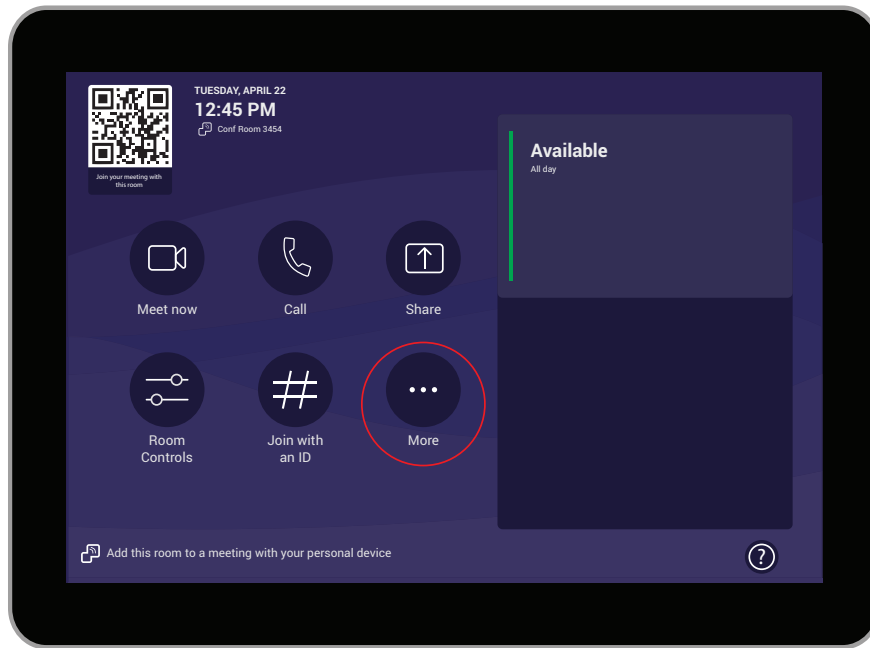
Follow the Yealink MCore Kit instructions for how to integrate with your Microsoft Teams environment.

Once the Yealink MCore Kit is ready to join Microsoft Teams calls, then the Yealink MCore Kit is ready for installing the latest version of the Yealink RoomConnect and Mira Connect AV Control Software.

### Step 2. Navigate to the Yealink MCore processor settings

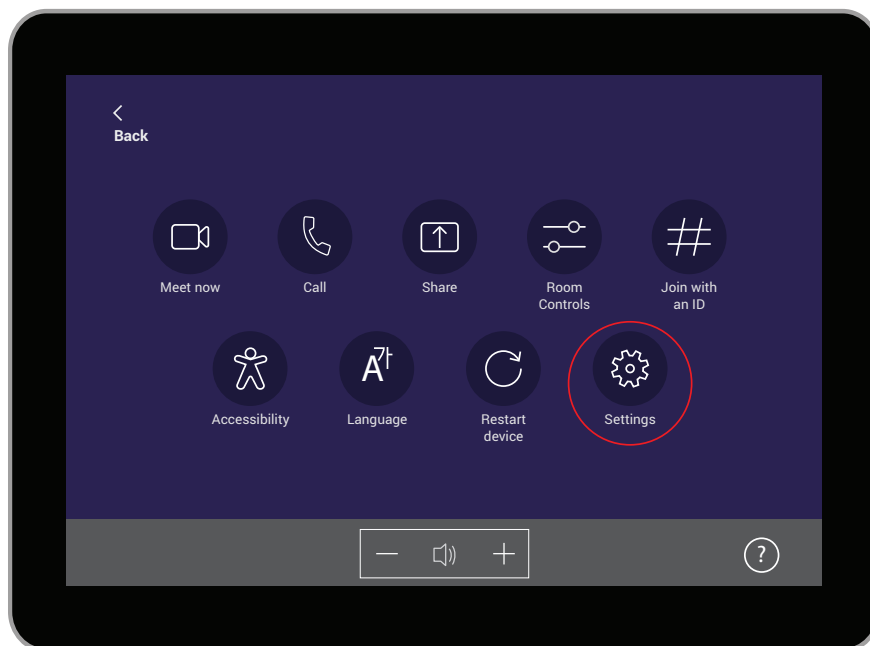
From Yealink MCore Kit's touch panel, press the **More...** icon to get to the Settings.





**Figure 4:** Select More... from the main screen.

Next, press the **Settings** icon.

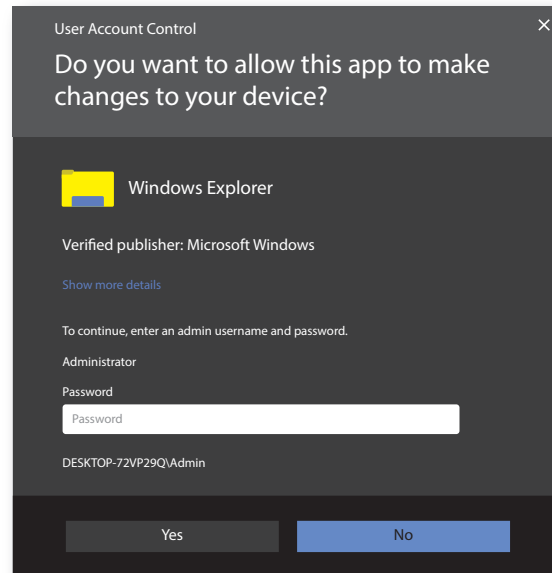


**Figure 5:** Select Settings to access the settings.

When prompted with the dialog: **“Do you want to allow this app to make changes to your device?”**, enter the default

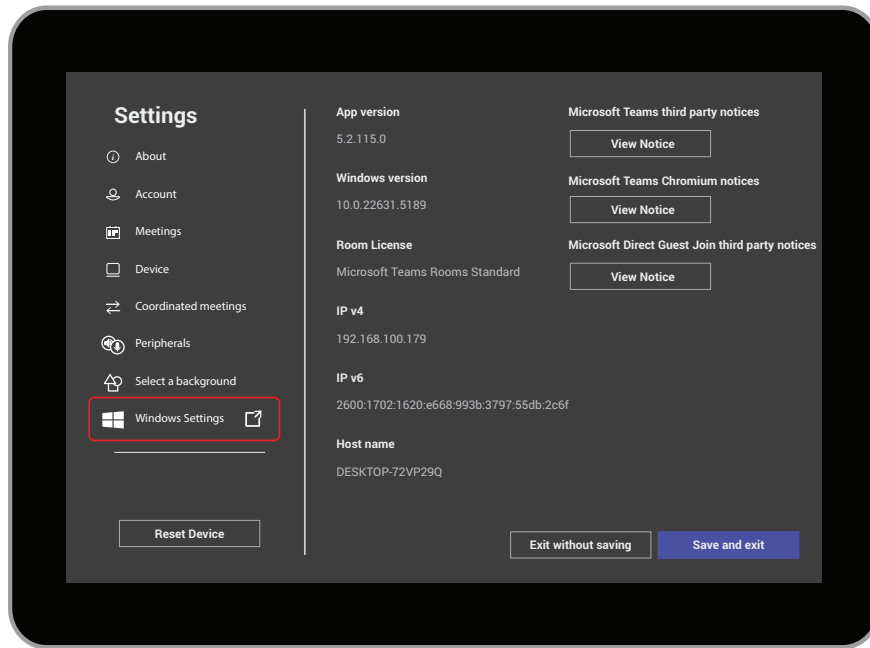
password of *sfb* and press Enter.

If your Microsoft Teams system has been configured with a different administrator password, please use that password instead.



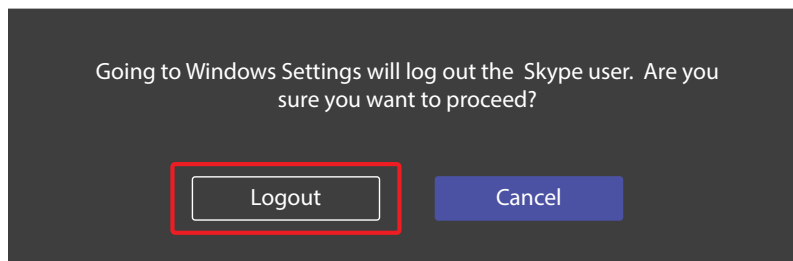
**Figure 6:** Enter the administrator password and select Yes.

Press **Windows Settings** to leave the Microsoft Teams application and access the Windows login screen.



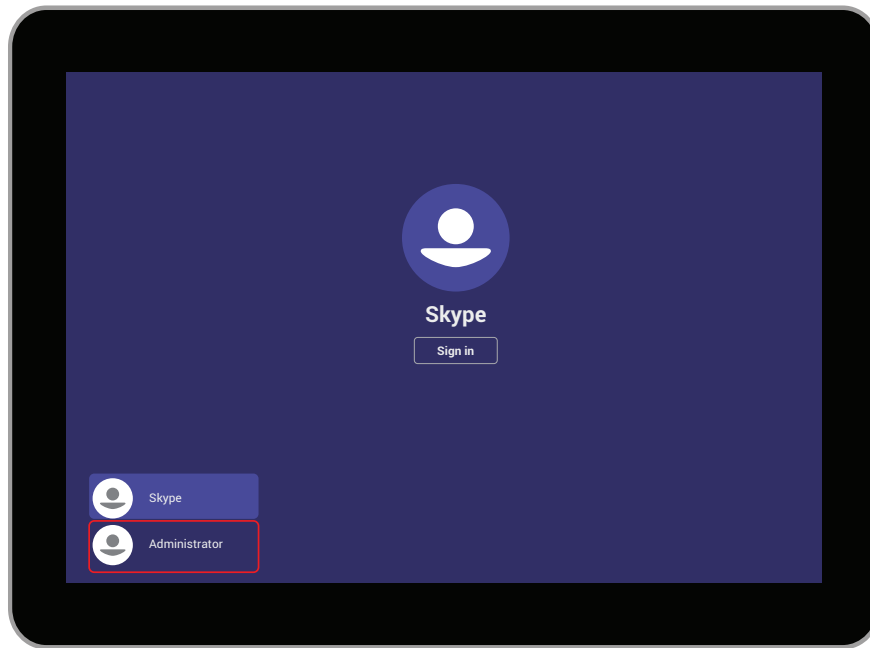
**Figure 7:** Select Windows Settings to log into Windows.

If prompted to logout as the Skype user, select **Logout** to continue.



**Figure 8:** Select Logout to access the Windows operating system.

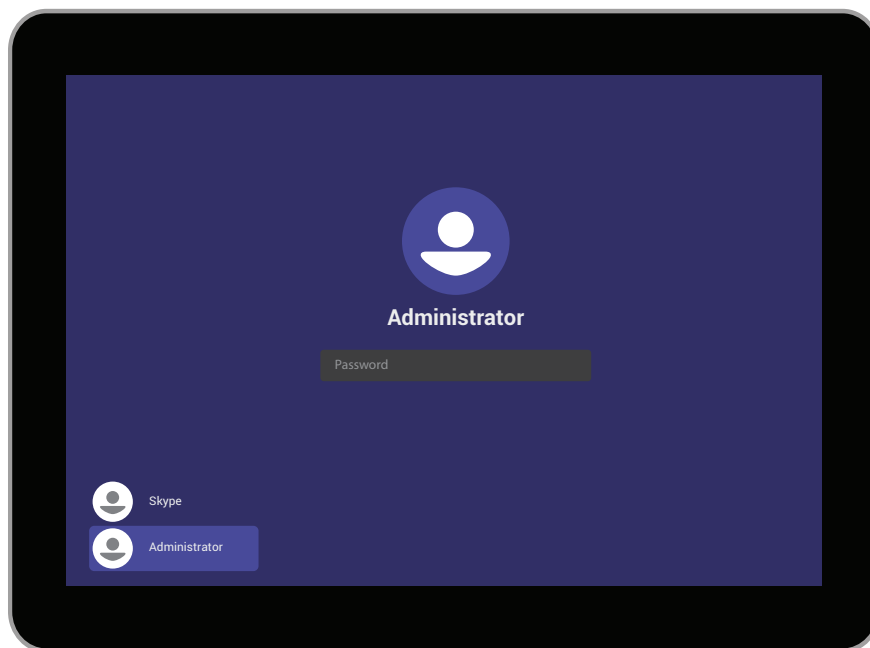
By default, the Skype user account will be selected. To log in as an administrator, select the **Administrator** user account.



**Figure 9:** Select the Administrator account.

Once the **Administrator** user account is selected, enter the administrator's password. The default password is *sfb*.

If your Microsoft Teams system has been configured with a different administrator password, please use that password instead.



**Figure 10:** To access the Windows operating system, enter the Administrator password.

The Windows operating system will appear on the touch panel and on the room's HDMI-connected display.

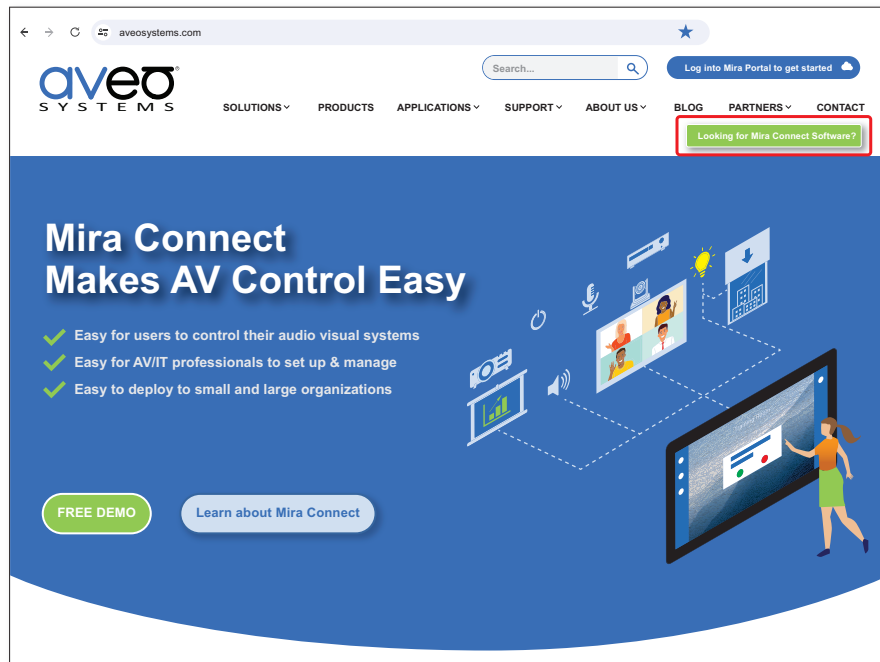
The Yealink MCore Kit is now ready to have Mira Connect Software downloaded and installed.

### Step 3. Download Mira Connect Software to the Yealink MCore processor

If using Mira Connect Software to add room controls, then on the Yealink MCore processor, open the Microsoft Edge browser and navigate to **AveoSystems.com**.

Click the green **Looking for Mira Connect Software** button to access the download page for Mira Connect Software.

Note: Mira Connect Software is available for Windows 10 and newer (Intel x64) computers, including the Yealink MCore processor. There is no cost to download and install the software and use with simulated equipment. Mira Connect Software includes simulators for all equipment that Mira Connect can control, allowing you to build an interactive system with simulated equipment before you have real equipment. Aveo Systems' Mira Connect Software requires a room license to control real equipment. For more information about room licenses, see the [room license](#) guide.



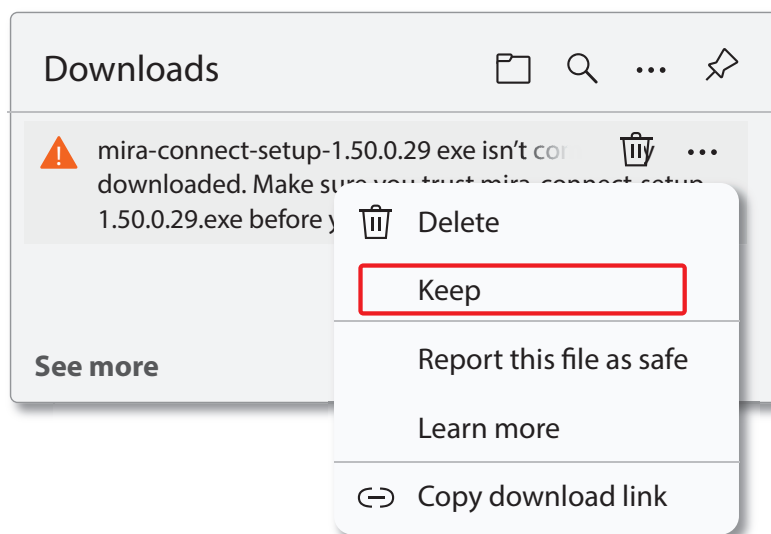
**Figure 11:** Download the Mira Connect Software from AveoSystems.com.

Next, click the **Download Now** button to download the latest version of Mira Connect Software. There is also a link to the Quick Install guide that includes additional information about installing and configuring Mira Connect Software on a Windows PC.



**Figure 12:** Download the latest version of Mira Connect Software.

If prompted that Mira Connect Software isn't commonly downloaded, select **Keep** to ensure the software is downloaded.



**Figure 13:** Select Keep to keep the Mira Connect Software download.

#### Step 4. Install Mira Connect Software

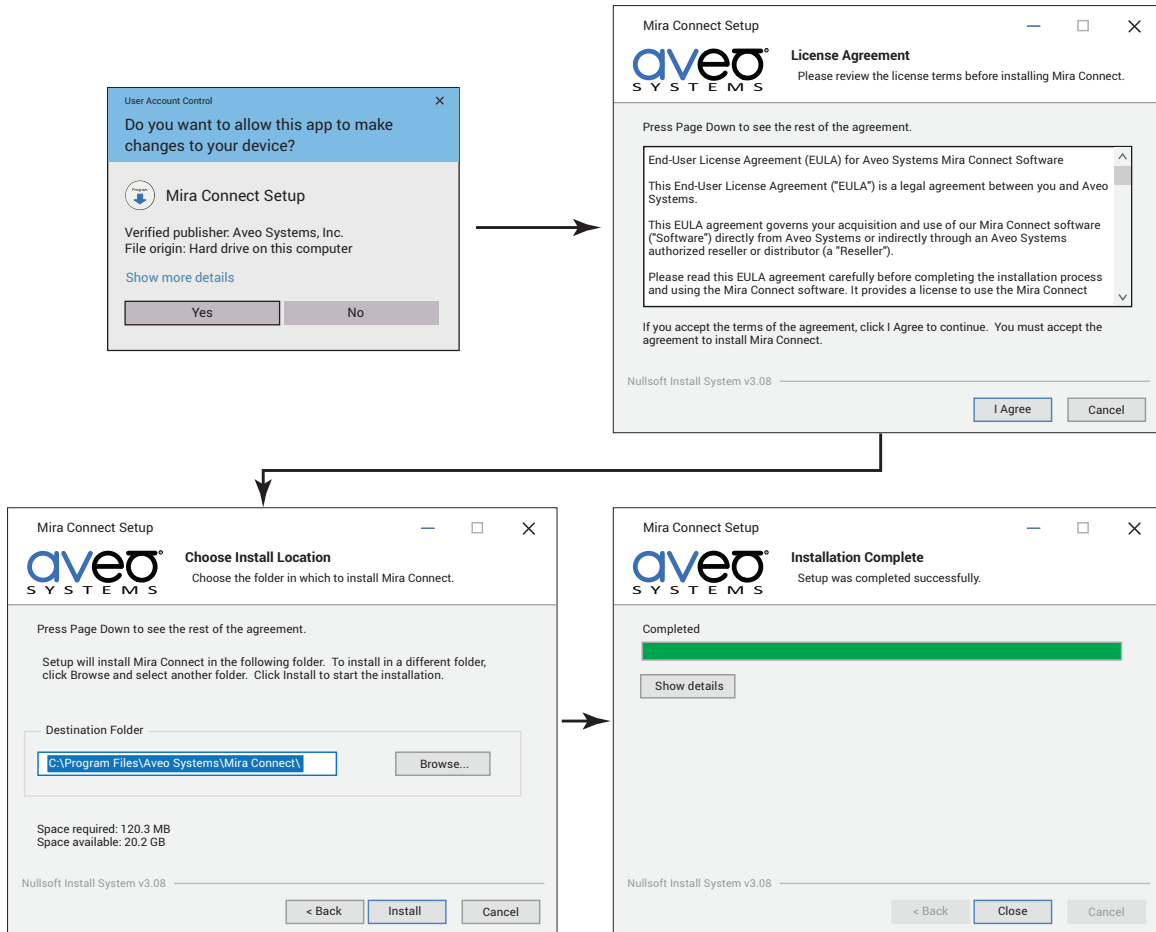
If using Mira Connect Software, then it must be installed by a user with 'administrator' privileges on the computer.

Open File Explorer and right-click on the Mira Connect Software download file and choose **Run as administrator** to install Mira Connect Software. By installing as an administrator, Mira Connect Software can run as a background service on the Yealink MCore processor and also get updates automatically.

A separate *Mira Connect service control* application is also installed that makes it easy to start and stop the service and configure room pairing with your room in Mira Portal.

For more information, see the [Mira Connect Software Quick Install Guide](#).

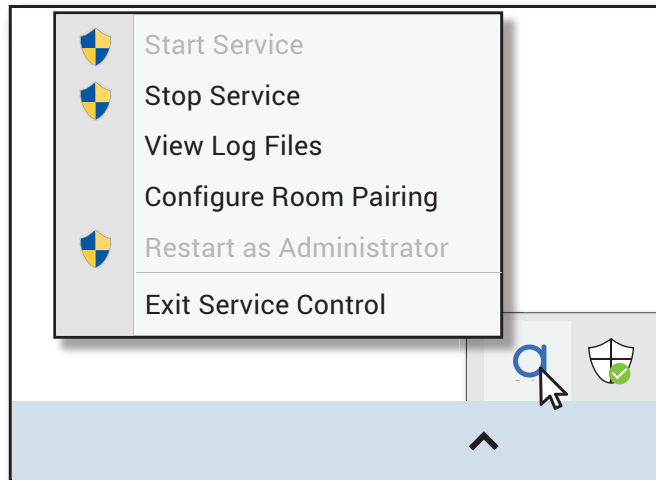
Follow the prompts to install Mira Connect Software. Once installed, click **Close**.



**Figure 14:** The Mira Connect Software installation screens.

You can check the status of the Mira Connect Software from the Aveo icon. You will use this option to configure room pairing in the next step.



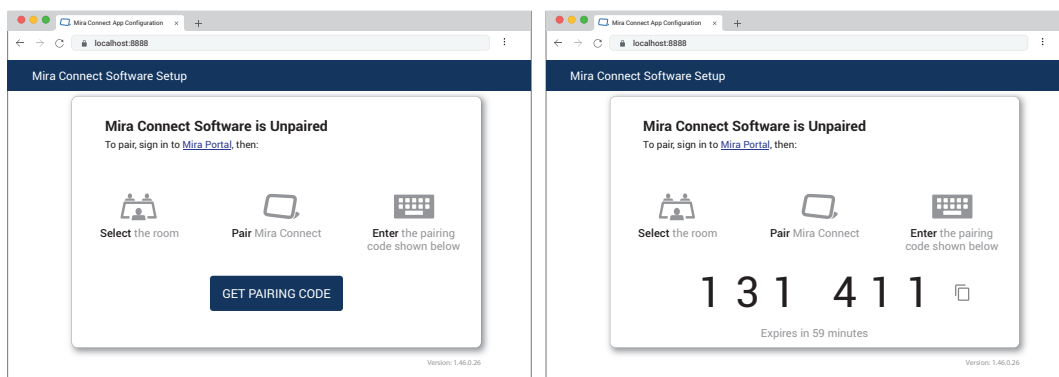


**Figure 15:** Use the Mira Connect service control application to check on the service status and to configure room pairing.

### Step 5. Get a Pairing Code

Choose **Configure Room Pairing** to open the pairing interface in your local browser. The computer must have internet access to get a pairing code from <https://mira.aveosystems.com>. For more information about the network requirements for Mira Portal, see our [network considerations](#) document.

The pairing code is valid for one hour, after which you can request a new pairing code. Once paired, you can unpair using the 'Unpair' option or unpair directly from Mira Portal.



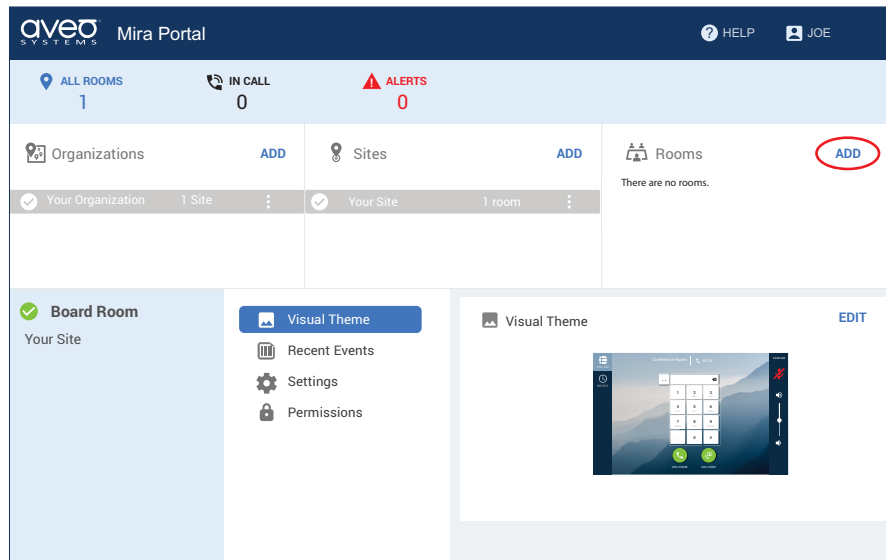
**Figure 16:** Use the Mira Connect service control application to request a pairing code.

### Step 6. Add a Room to Mira Portal

Using your Mira Portal account, create an organization, site, and room in [Mira Portal](#), the online management platform for Mira Connect. If you don't have a Mira Portal account, create one now. After creating a Mira Portal account, follow the tutorial to see how to create an organization, site, and room.

**Note:** In this step, you will use your Mira Portal account to create the organization, site, and room. In a future step, we'll create another Mira Portal account for the Yealink MCore processor and provide permissions that will allow the Yealink MCore processor to access the remote control features for this room.

While you can use any Mira Portal account with the Yealink MCore Kit, a best practice is to use your *Admin* Mira Portal account to create the organization, site, and room in Mira Portal and to add equipment, and then assign *Help Desk* permissions through your account to the Yealink MCore processor user account in Mira Portal.

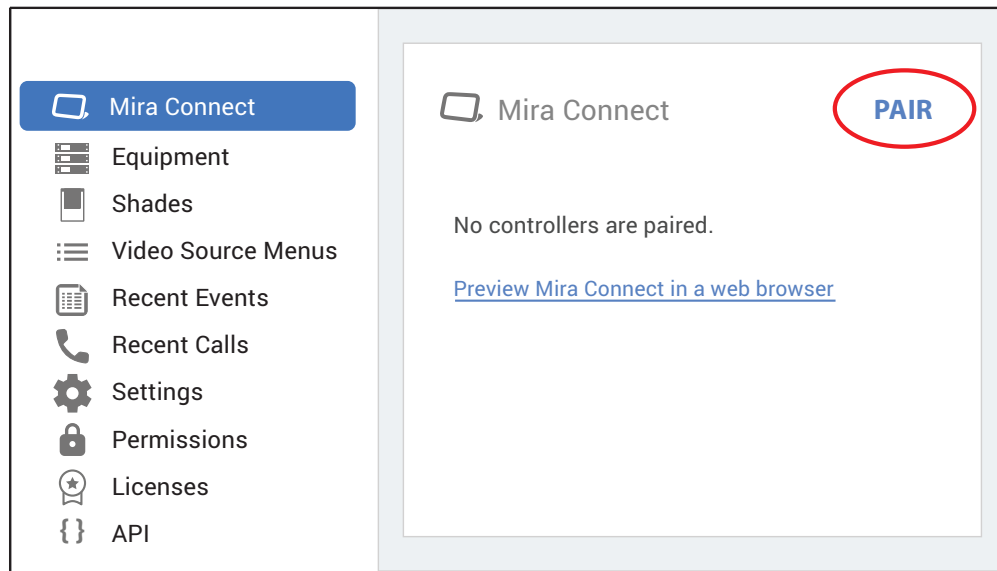


**Figure 17:** Click ADD to add a room to a site.

### Step 7. Pair Mira Connect Software to the Room in Mira Portal

Select the desired room, then the Mira Connect menu, and then click **PAIR** in Mira Portal. Enter the Mira Connect pairing code from a previous step to associate the Mira Connect Software control system with this room in Mira Portal.

Once paired, Mira Connect Software will attempt to connect to the equipment in the room. Since there is no equipment, you'll add equipment in the next step.



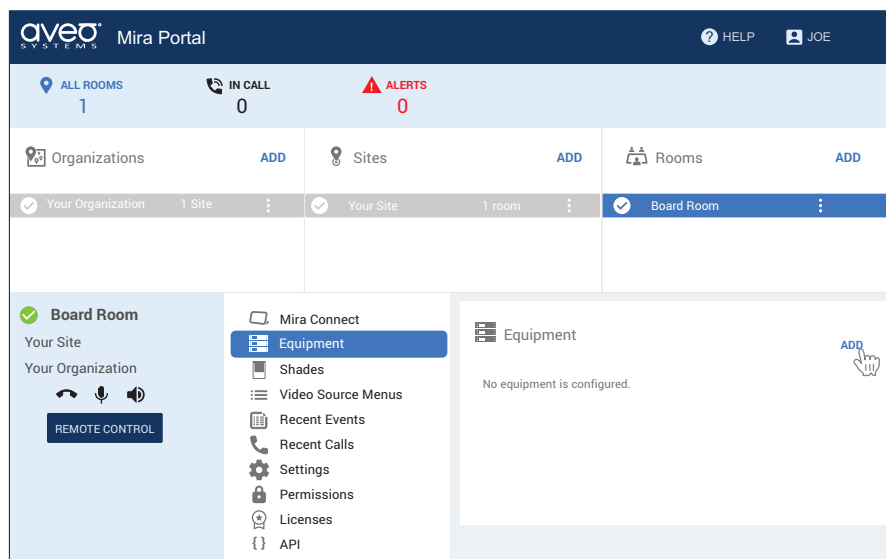
**Figure 18:** Click PAIR to enter the pairing code.

### Step 8. Add Equipment to the Room

Mira Connect can control displays, video switchers, VISCA cameras, lighting, shades, TV tuners, recorders/streamers, and more. See our [Supported Equipment](#) list with integration guides for other equipment.

For an example of how to get started, see our [short training videos](#) and see our [Getting Started](#) guide.

You may also customize the background image, logo, and colors by editing the visual theme at the Mira Portal site level. See the Mira Connect [Finishing Touches Guide](#) for more details.



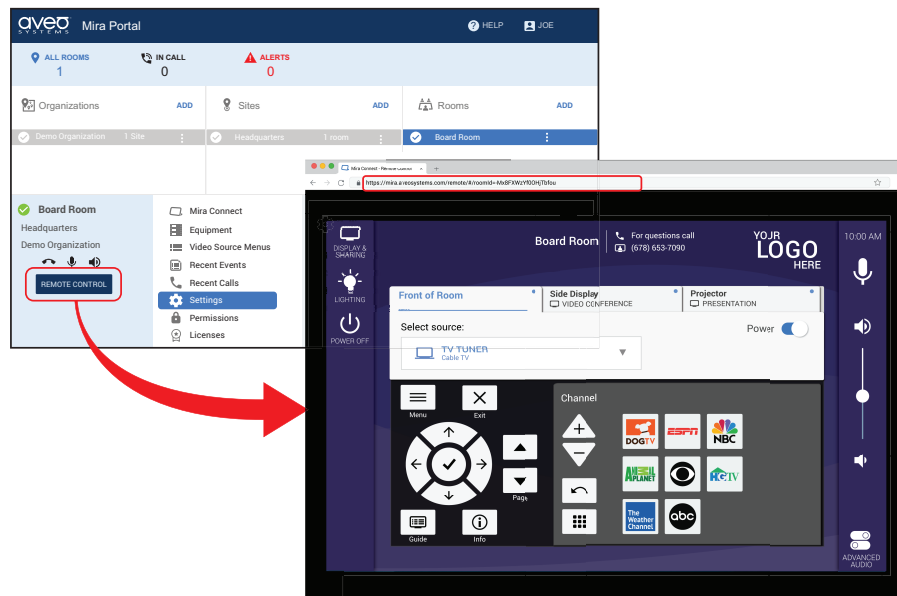
**Figure 19:** Add equipment to the room by selecting the Equipment tab and then clicking ADD.

## Step 9. Get the Remote Control URL

Select the room in Mira Portal and then click the **REMOTE CONTROL** button to open the remote control settings in a browser. If the remote control button is not active, then a [room license](#) is required to activate the remote control feature. Once a room license has been assigned to the organization and then assigned to the room, the Remote Control feature will be available.

Note: The remote control URL is unique to each room in Mira Portal. If configuring multiple Yealink MCore Kits, each one will have a different remote control URL.

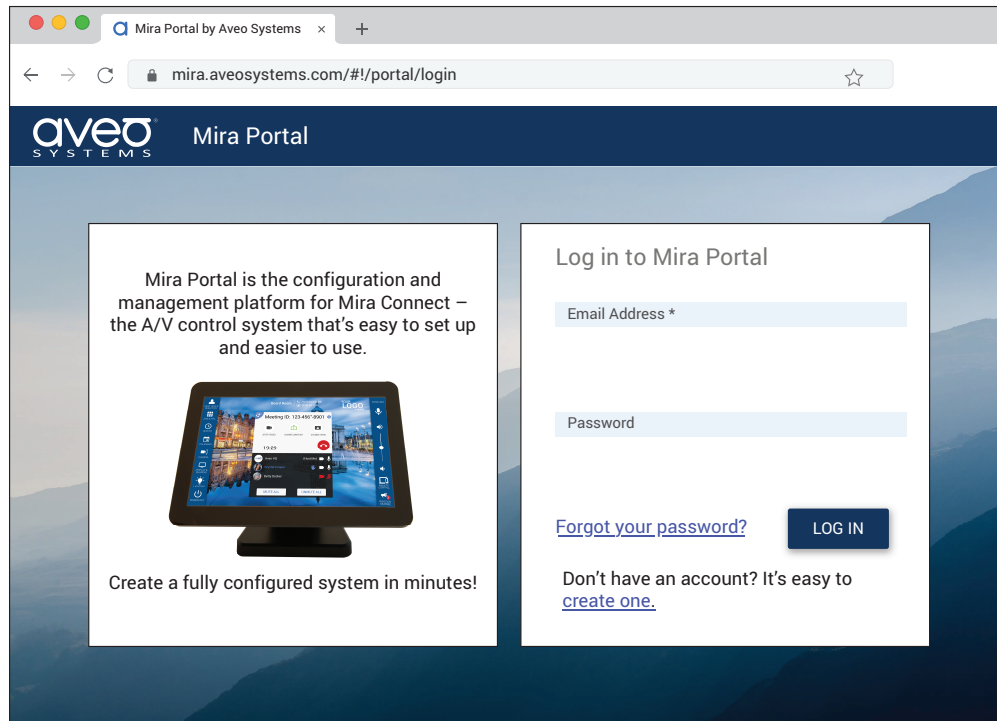
Copy the URL, as you'll need this to configure the Yealink RoomConnect plugin in an **upcoming step**.



**Figure 20:** Click the REMOTE CONTROL button to open your browser to the remote control URL.

### Step 10. Create a Mira Portal account for the Yealink MCore processor user

Navigate to [Mira Portal](#) and create a new Mira Portal account for the Yealink MCore processor user. You will use the Yealink MCore processor Mira Portal username and password at a later step when we access the Yealink RoomConnect Room Control for the first time.



**Figure 21:** Click 'create one' to create a new Mira Portal account.

### Step 11. Assign Permissions to the Yealink MCore processor Mira Portal user account

Log out of the Yealink MCore processor Mira Portal account and log back into your *Admin* Mira Portal account.

Next, assign *Help Desk* permissions to the Yealink MCore processor Mira Portal account from your *Admin* account.

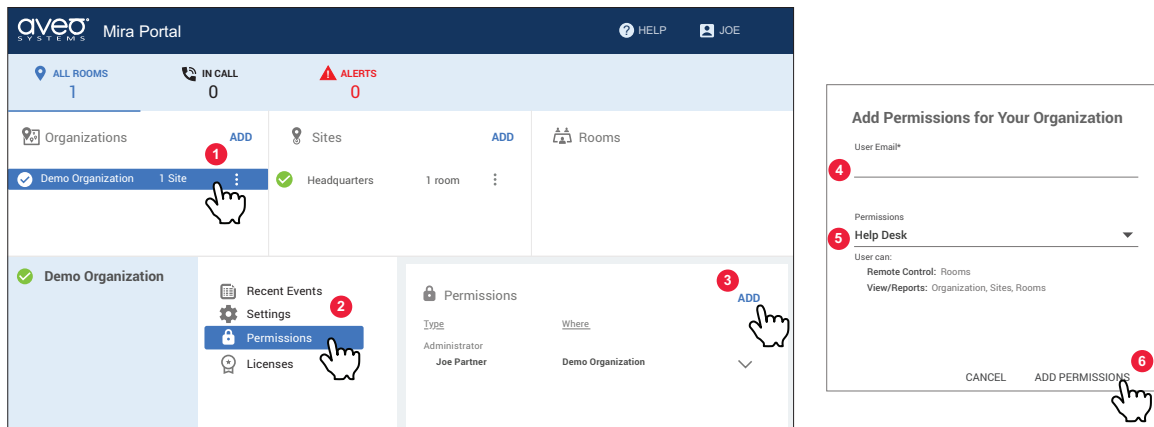
While there are four levels of permission used to manage organizations and sites within Mira Portal, it's a best practice to assign *Help Desk* permissions to the Yealink MCore Kit to only allow access to the remote control features.

The Mira Portal permissions from least to most are as follows:

- *Reporting*: Provides read-only access to view system and equipment status.
- *Help Desk*: *Reporting* plus access to remote control and enabling real-time notifications of equipment issues.
- *Technical*: *Help Desk* plus can add, remove, and edit equipment and organization, site, and room settings.
- *Administrator*: *Technical* plus can assign permissions to other Mira Portal users.

*Technical* permissions are recommended for users who will be making changes to the control points or adding / removing equipment. *Administrator* permissions are recommended for users who need to assign permissions to other users.

To assign permissions to the organization, select the organization, select **Permissions**, then click **ADD**, and enter the email address and password associated with the Yealink MCore processor's Mira Portal account. Select *Help Desk* permissions and click **ADD PERMISSIONS**.



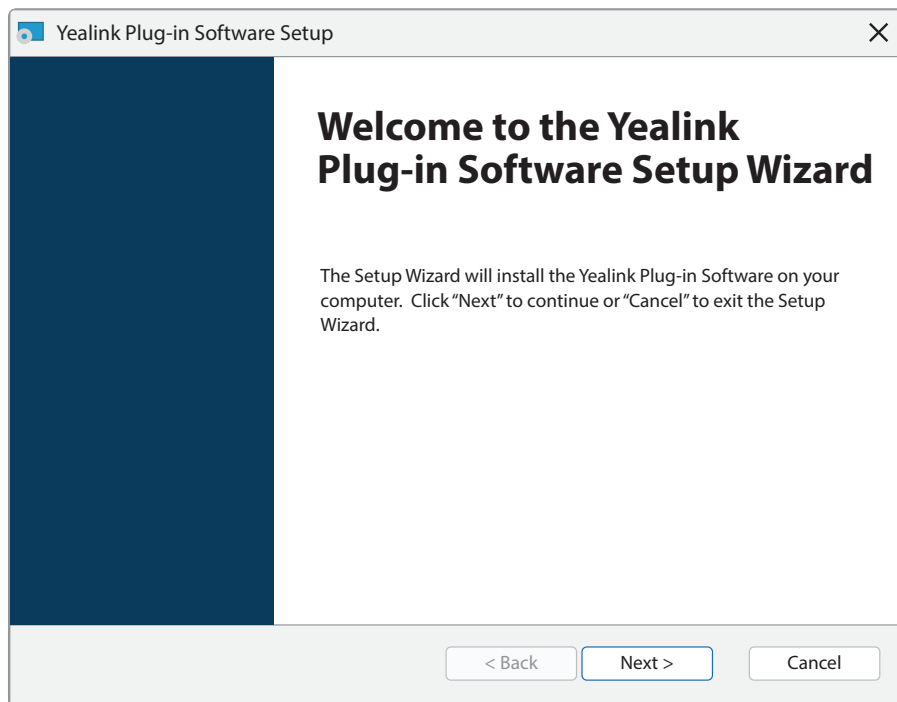
**Figure 22:** Follow these steps and add Help Desk permissions to the Yealink MCore processor Mira Portal account.

### Step 12. Download and install the Yealink RoomConnect to the Yealink MCore processor

If the Yealink RoomConnect application has not already been installed on the Yealink MCore Kit, then on the Yealink MCore processor, open the Microsoft Edge Browser and navigate to the [Yealink RoomConnect support page](#). Download the latest version of the Yealink RoomConnect.

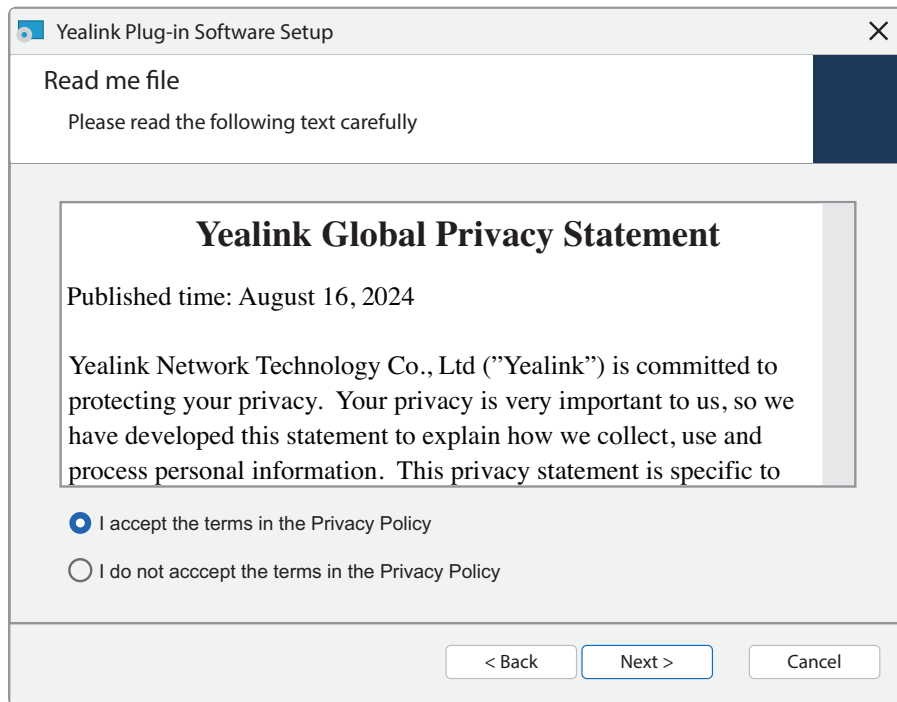
Note: This integration was tested with Yealink RoomConnect version 2.35.28.0.

Find the Yealink RoomConnect downloaded file in the Downloads directory and run *as an administrator* the downloaded Yealink RoomConnect installation file. Click **Next** to start the installation.



**Figure 23:** Start installing the Yealink RoomConnect software by clicking Next.

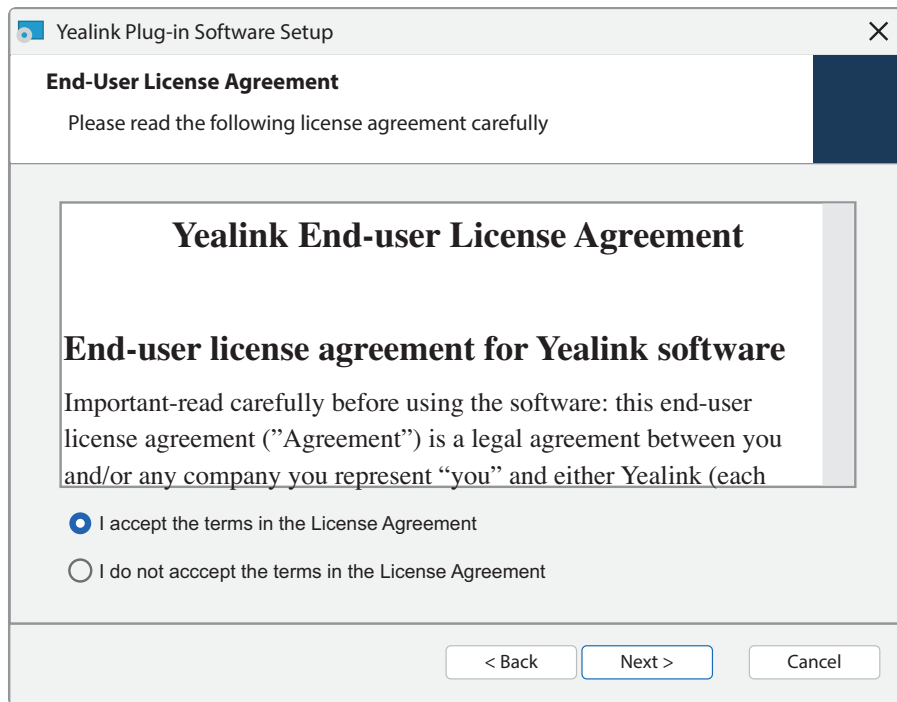
Review and accept the privacy policy and click **Next**.



**Figure 24:** Review and accept the privacy policy.

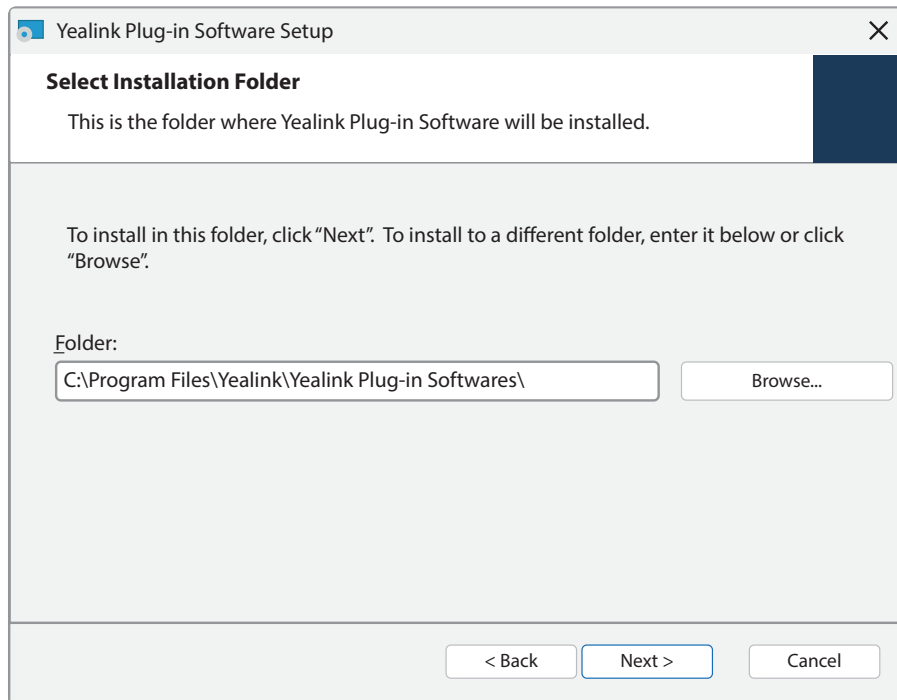
Review and accept the license agreement and click **Next**.





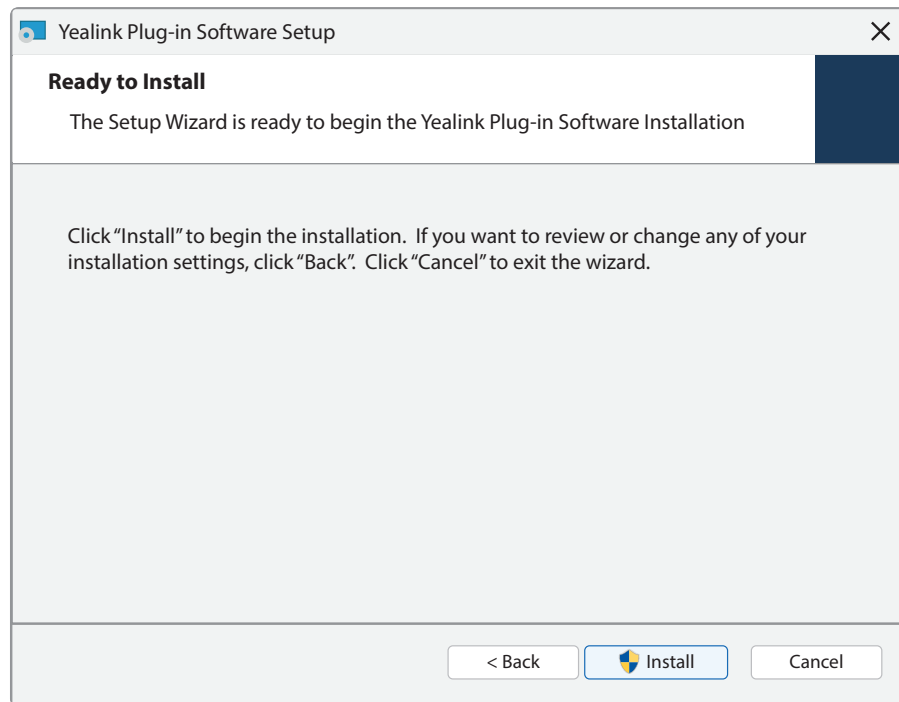
**Figure 25:** Review and accept the license agreement.

Select the folder where to install the Yealink RoomConnect and click **Next**.



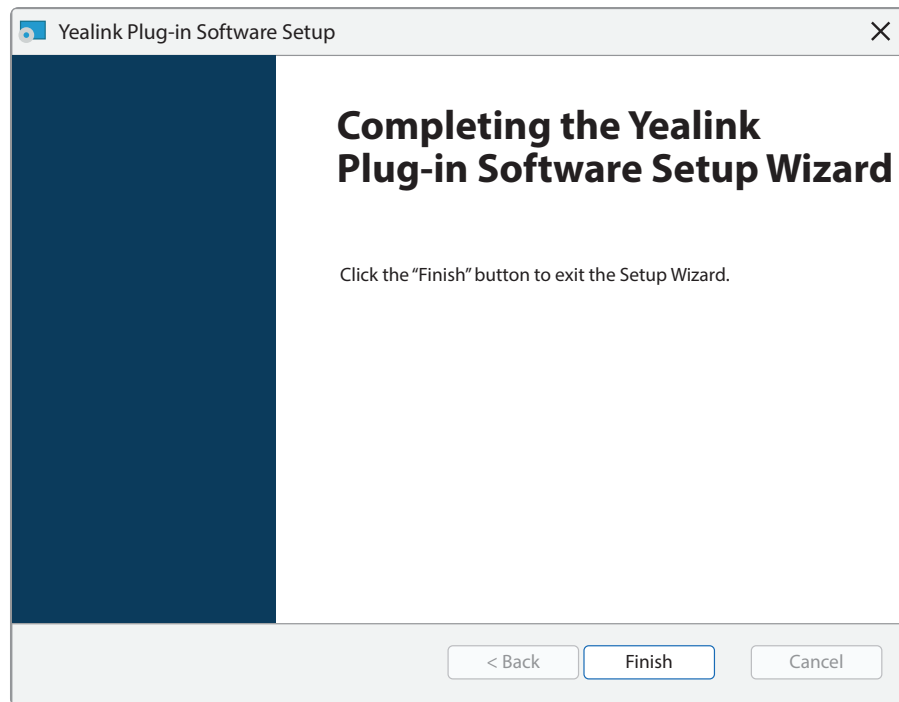
**Figure 26:** Select the installation folder.

Click **Install** to begin the installation of the Yealink RoomConnect.



**Figure 27:** Begin the installation.

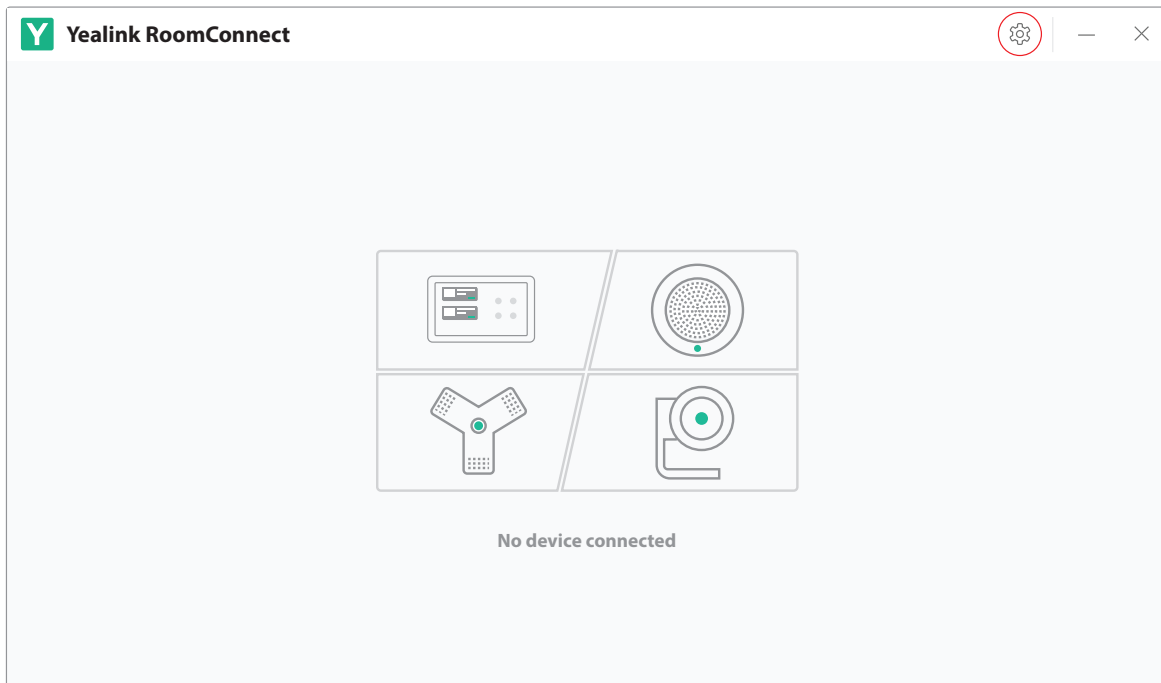
Click **Finish** to finish the installation.



**Figure 28:** Click Finish to finish the installation.

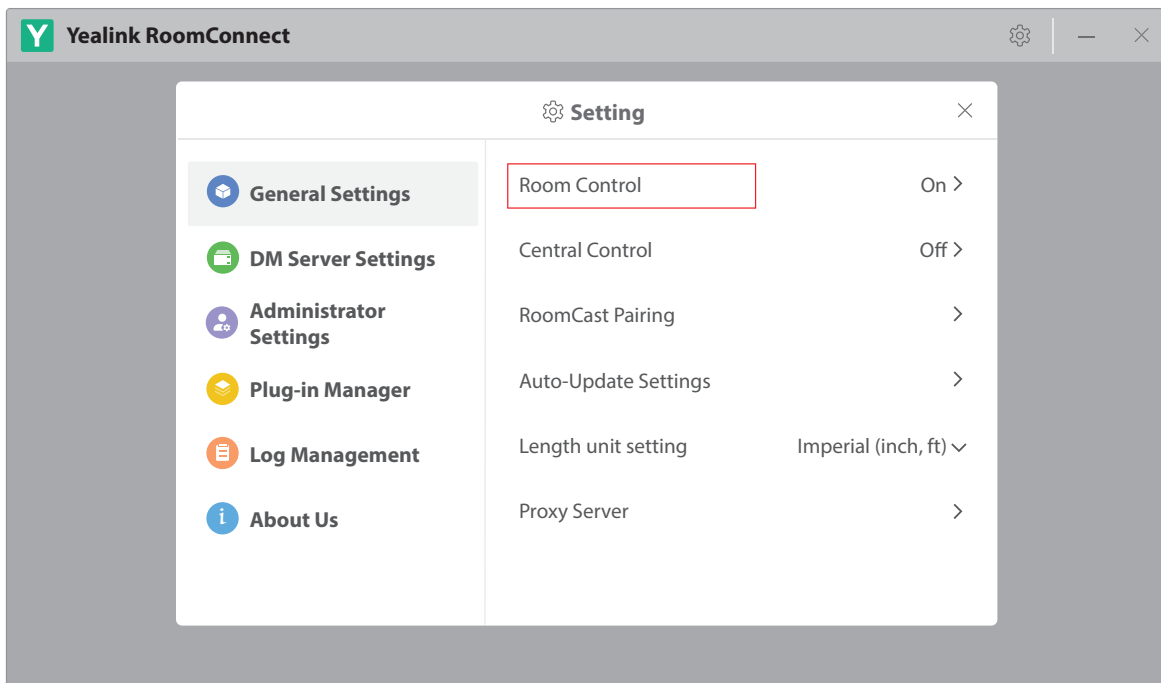
### **Step 13. Add the Mira Connect Remote Control URL to the Yealink RoomConnect application**

Run the Yealink RoomConnect application and select the gear icon on the upper right of the window.



**Figure 29:** Click the gear icon to configure room control.

Select **Room Control**.



**Figure 30:** Select Room Control.

Enable **Room Control** option by clicking toggle control.

Enter, or copy and paste, the URL for Mira Connect's Remote Control.

A typical Mira Connect remote control URL is as follows:

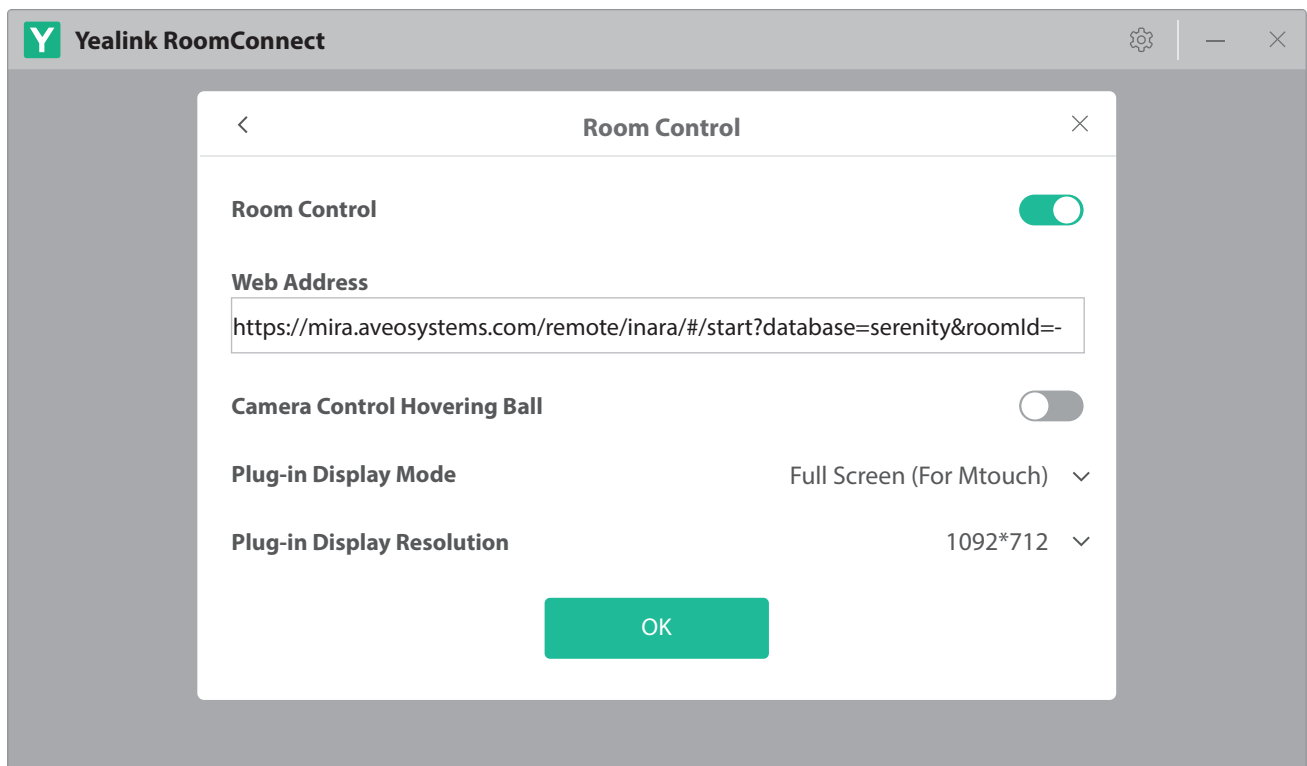
`https://mira.aveosystems.com/remote/#!/start?database=serenity&roomId=-OPMY0iX9lb6IL7sfkt3`

Note that each room will have a *unique* roomId. Ensure you are using the correct roomId for the desired room. Note that **roomId** is lowercase room followed by a capital I and lowercase d.

To ensure the Mira Connect Remote control view appears full screen in the Room Control window presented on the touch panel, edit the Mira Connect Remote Control URL and add the characters `/inara` between `remote` and `/#` as follows:

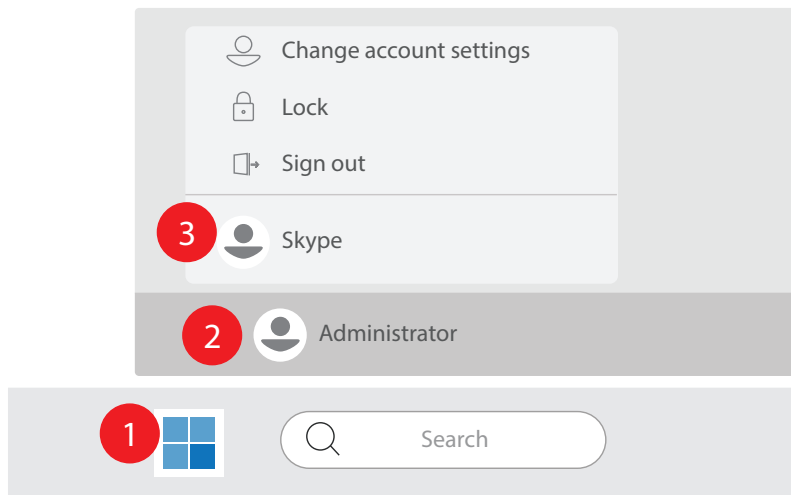
`https://mira.aveosystems.com/remote/inara/#!/start?database=serenity&roomId=-OPMY0iX9lb6IL7sfkt3`

Note that there are options for changing the plug-in display resolution if you need to adjust the size of the display window for the Mira Connect remote control view.



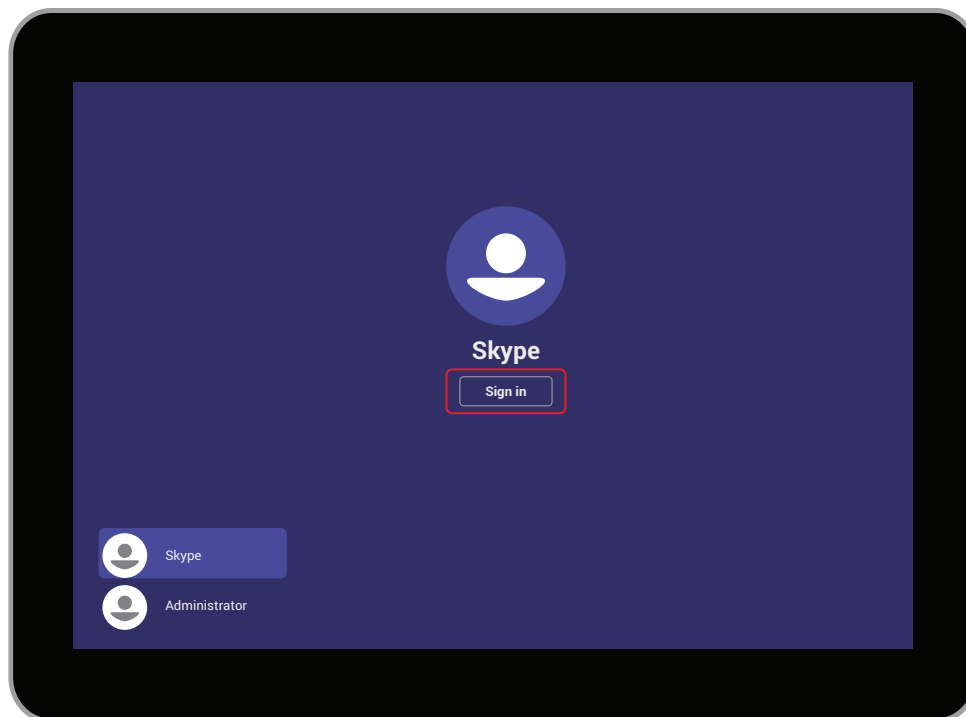
**Figure 31:** Enter and edit the Mira Connect Remote Control URL that was shown in an earlier step.

Once the Mira Connect remote control user interface appears, you can close the Yealink RoomConnect application, logout as an Administrator, and log back in as the Skype user.



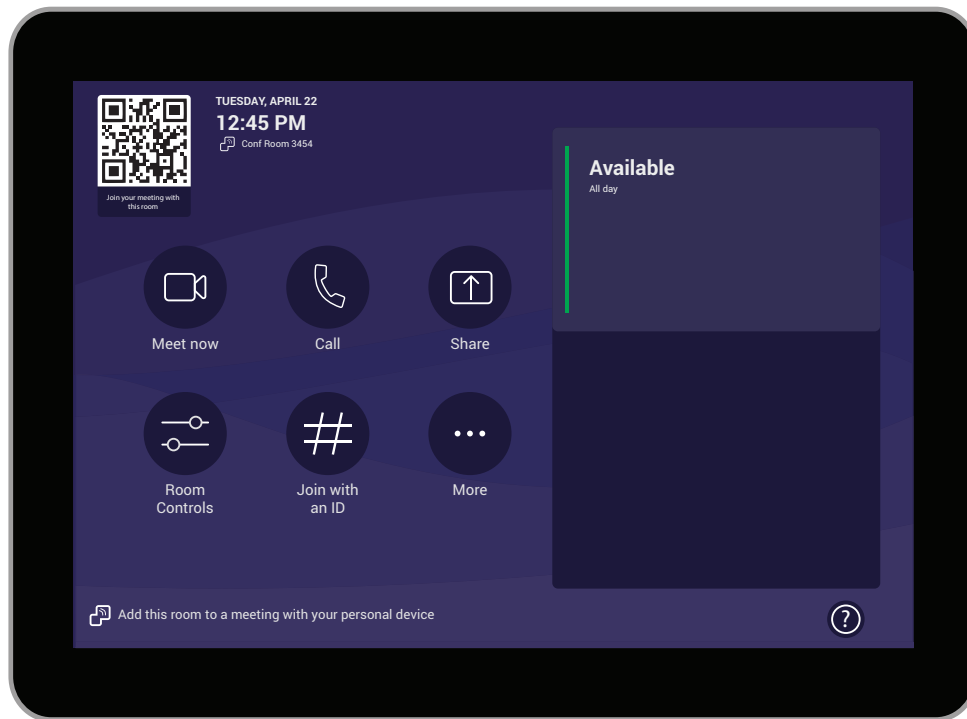
**Figure 32:** To login as the Skype user, select the Windows icon (1), select the Administrator user (2) and then select Skype user (3).

Select **Sign In** to login as the Skype user.



**Figure 33:** Select the Windows icon and then select Skype user.

The Microsoft Teams user interface will appear once logged in as the Skype user.



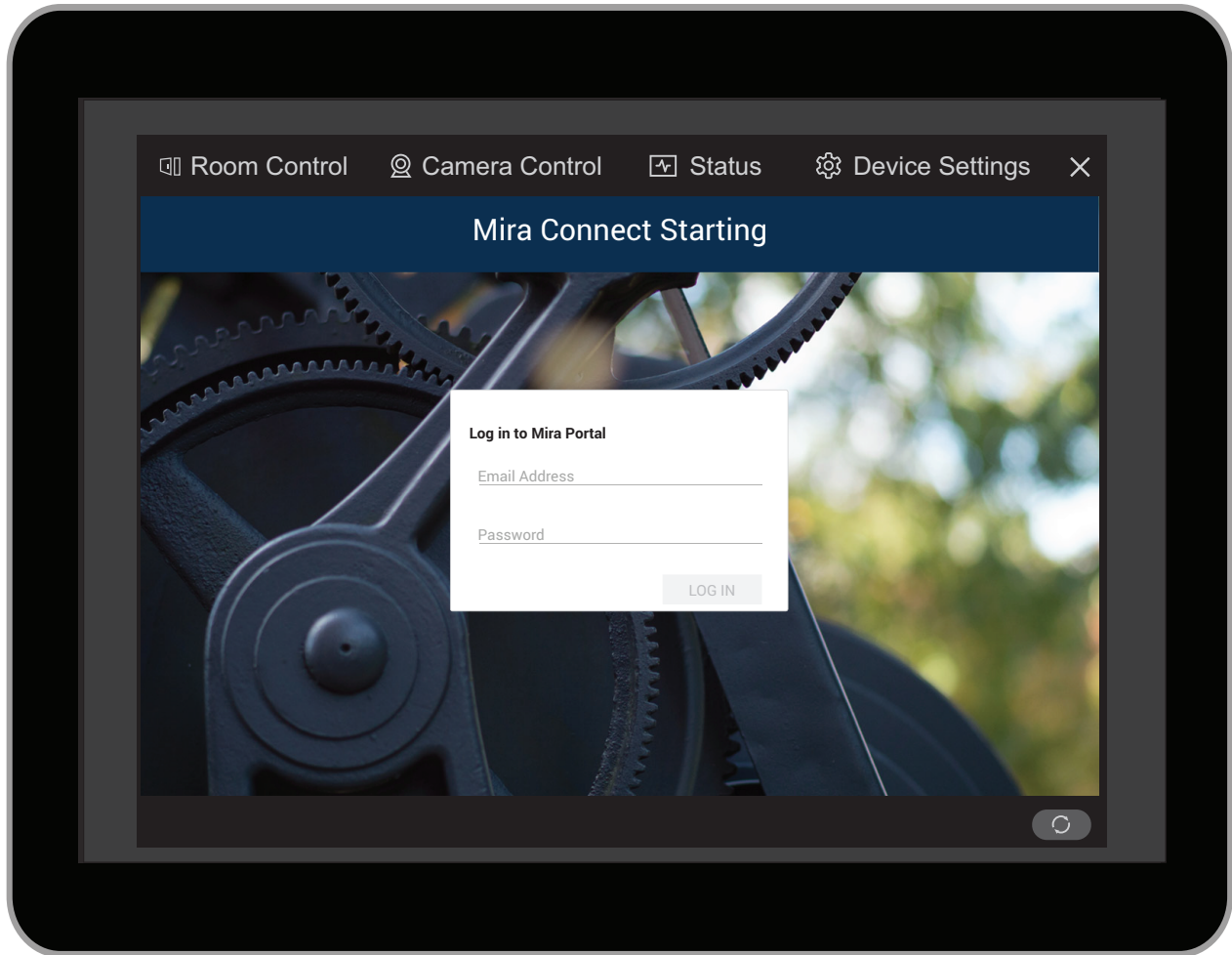
**Figure 34:** The Microsoft Teams user interface.

#### Step 14. Test the Room Controls

Once configured, press the **Room Controls** button on the Microsoft Teams user interface to access the Mira Connect room control. Press the Room Controls tab to access the room controls.

The first time the Room Controls are accessed, a login prompt will be presented. Enter the MCore user credentials created earlier.





**Figure 35:** Enter the MCore user name and password created earlier.

After the credentials have been entered, the user interface will appear.



**Figure 36:** To access the Mira Connect user interface, press the Room Controls icon on the Microsoft Teams interface.

If Room Controls tab is blank, press the refresh button on the lower right corner to refresh the user interface.

The Mira Connect user interface will continue to show on the Yealink MCore Kit touch panel as long as it is being used. If the user interface is not touched for 60 seconds, the system will revert back to the Microsoft Teams user interface.

To get back to the Room Controls user interface again, press the **Room Controls** icon on the Microsoft Teams UI.

### Step 15. Add Mira Connect Finishing Touches

Once the Yealink RoomConnect has been configured, there are additional steps that can be taken to customize the look of the Mira Connect user interface.

See the [Finishing Touches Guide](#) for more information on how to customize the background image and logo, add a password to restrict access, and more.

### Troubleshooting Yealink MCore Kit Room Controls

- If the Yealink RoomConnect Room Controls does not open the Room Control URL, confirm that the URL matches the Mira Portal Remote Control URL that was saved in an earlier step.

- If the Yealink RoomConnect Room Controls do not seem to be controlling the room's equipment, ensure that you used the correct roomId value when configuring the URL. Each room has a unique roomId.
- For other issues related to the Yealink RoomConnect behavior, check with Yealink to see if there is a newer version of the Yealink RoomConnect application.

For more information please contact Aveo Systems' Support Department at [support@aveosystems.com](mailto:support@aveosystems.com).

### **About Aveo Systems**

*Aveo Systems is a leading provider of intuitive and easy-to-use AV control solutions for audio, video, and collaboration, improving how systems are used and managed by customers worldwide. For contact information, see [AveoSystems.com/contact-us](https://AveoSystems.com/contact-us).*

Specifications subject to change without notice. Aveo Systems and the Aveo logo are registered trademarks. All other trademarks are the property of their respective owners.

DS-11179-001, Version: October 21, 2025