

Samsung Smart TVs (EXLink)

Displays

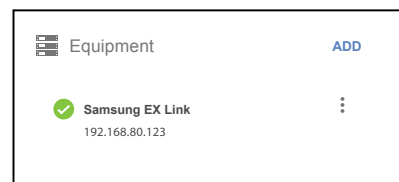


The Samsung Smart TV family of displays, also known as Samsung Consumer or Prosumer displays, can be controlled with Mira Connect™, Aveo Systems’ smart control appliance via Samsung’s EXLink RS-232 interface on the Smart TV.

Mira Connect communicates and controls Samsung Smart TV displays over an RS-232 connection using the Global Cache IP2SL IP to serial interface accessory. If your Samsung display has an EXLink 3.5mm socket, it can likely be controlled by Mira Connect.

Step 1 To integrate a Samsung Smart TV display with Mira Connect using RS-232, first set up the GlobalCache IP2SL device on the network and connect the RS-232 cable to the display and to the Global Cache device. See our [Global Cache integration guide](#) for more information.

Step 2 Add the Samsung Smart TV, labeled “Samsung EXLink” to the room in Mira Portal (<https://mira.aveosystems.com>), enter the IP address of the GlobalCache IP2SL device and press ‘add equipment’. As the Samsung Smart TV does not respond to API commands when powered off (except for the power on command) the Samsung Smart TV must be powered on for Mira Connect to validate the connection to the display.



Once the display is turned on, Mira Connect will connect to the Samsung Smart TV display and show the status of the connection. Mira Portal shows the equipment status as a green circle if the connection is valid, otherwise the warning symbol, ⚠, will appear indicating the IP address is not correct, or the display’s RS-232 baud-rate settings do not match the settings on the Global Cache IP2SL, or the display was turned off during discovery.

Step 3 Specify which video inputs are used on the display by selecting Edit from the device’s ⋮ menu, selecting the Video Inputs tab and enabling an input, selecting an icon, and entering text labels for the desired inputs. This will create a display menu as shown on page 2. While the Mira Connect universal equipment driver supports all inputs available on Samsung Smart TV displays, to keep it simple for the room users, only enable the required inputs for use in the room.

See the [Mira Connect Administrators Guide](#) for more information about using Mira Portal to set up Mira Connect.

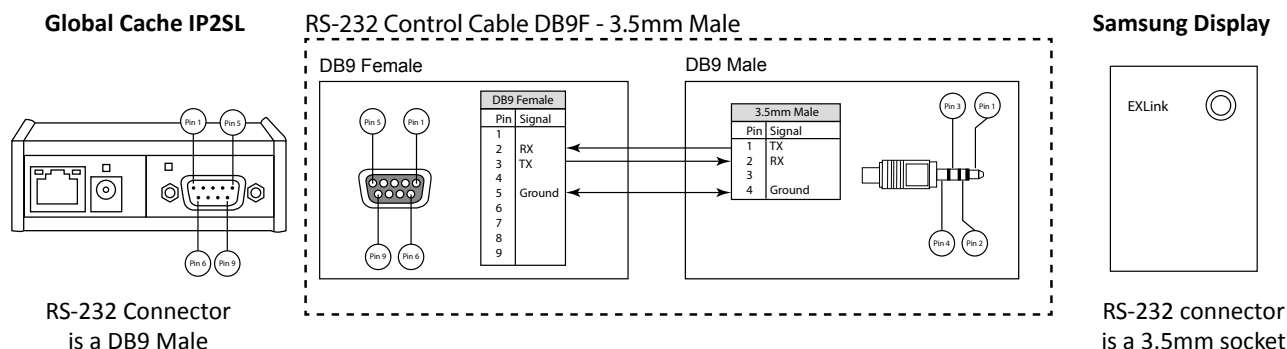
Important information about the integration is summarized below.

Control Interface Options

Network connection with TCP, port 4999, using the Global Cache IP2SL interface.

Use Global Cache’s [iHelp](#) program to discover the device’s IP address, then browse into the device to set the desired static IP address and set the baud rate to 9600bps (the default). The GlobalCache IP2SL (part number 151.0010.001) is available as an accessory from Aveo Systems. See the Mira Connect [Global Cache integration guide](#) for more information.

Ensure the baud rate on the Global Cache IP2SL matches the baud rate configured on the Samsung Smart TV display. Default RS-232 settings for the Samsung Smart TV displays are 9600 baud, 8 data bits, no parity, 1 stop bit, no flow control. Use an RS-232 cable that you provide as shown in the following figure.



Control Scope

Mira Connect controls the source selections and power state of the display and can track changes made to the display via the IR remote.

Due to limitations in Samsung’s EXLink interface, Mira Connect can’t tell if the display is present or if the serial cable is disconnected because the display does not respond to any queries when it is powered off.

Note that on-screen menus are not usable while Mira Connect is controlling the display. Due to Mira Connect’s command polling, the display treats EXLink commands as user input, thus making the on-screen menus disappear. If you need to use the on screen menus, disconnect the RS-232 cable from the display or choose the ‘simulate’ option for the driver so that commands are not being sent to the display. When done using the on-screen set up menus, reverse your steps to re-enable communication over the RS-232 cable.

If the display is set to an input that would show a “No Signal” message, then that message will flicker periodically due to commands from Mira Connect via EXLink.

There is no support for volume control of the display. Use a DSP audio conference device or video conferencing system for volume control.

Supported Models

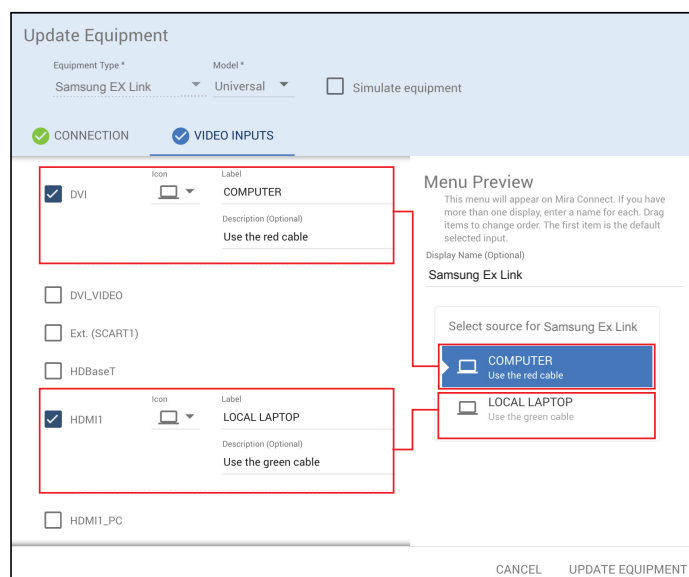
Mira Connect supports the UN-series of Samsung Smart TV displays that have an ExLink 3.5mm socket.

Software Versions

Tested with Samsung Smart TV UN55ES7100F.

Configuration

To enable a display menu on Mira Connect, enable the desired video inputs, select an icon, and set the text labels. The display menu will be built and previewed on the Video Inputs tab within Mira Portal. An optional display name may be entered which is useful if you have multiple displays in a room.



For more information please contact our Sales Department at sales@aveosystems.com.

About Aveo Systems

Aveo Systems is a leading provider of intuitive and easy-to-use solutions for audio, video, and collaboration, improving how systems are used and managed by customers world-wide.

Specifications subject to change without notice. Aveo Systems and the Aveo logo are registered trademarks. All other trademarks are the property of their respective owners.

