

## Integrating Mira Connect AV Control Software with Poly Studio Base Kit G9 Plus

The Poly Studio Base Kit G9 Plus are certified Microsoft Teams Rooms solutions that include an HP Mini IP Conferencing PC and a touch panel.

Mira Connect can be integrated with the Poly Studio Base Kit G9 Plus by using either the [remote control](#) of a Mira Connect touch panel or, if there is not a separate Mira Connect touch panel, by installing Mira Connect Software directly on the Poly Studio Base Kit G9 Plus. In either use case, [WAN](#) access is required for Mira Connect or Mira Connect Software.

Installing Aveo Systems' Mira Connect Software directly on the Poly Studio Base Kit G9 Plus transforms the Poly Studio Base Kit G9 Plus into an AV control system, adding AV room controls directly to the Poly Studio Kit G9 Plus touch panel using Mira Connect Software's [remote control](#) feature.



**Figure 1:** Aveo Systems' Mira Connect Software can run on the HP Mini IP Conferencing PC while it operates as a Microsoft Teams Rooms system and can provide access to Mira Connect Software's AV room control user interface through the touch panel.

### Getting Started with Mira Connect Software

Aveo Systems' Mira Connect is an AV control system that controls thousands of devices, communicating with devices over an Ethernet network, RS-232 using a Global Caché IP2SL, infrared (IR) using a Global Caché IP2IR, or with contact closures using a Global Caché IP2CC.

If you are just getting started with Aveo Systems and Mira Connect, please watch our [short training videos](#), review our [technical documents](#), see our [additional resources](#), see our [IT Network Basics for AV Professionals](#) article, and find even more information in the [Mira Connect Administrator's Guide](#).

When controlling devices over RS-232, see the [Global Caché Integration Guide](#) for how to configure a Global Caché IP2SL and review our [RS-232 best practices](#) and [RS-232 troubleshooting](#) articles.



**Figure 2:** Aveo Systems' Mira Connect AV control is used in a variety of applications.

## Version Tested

Tested with Microsoft Teams version 5.4.210.0, Windows version 10.22631.5262, and MAXHUB Align version 8.5.2-release.30.

## Integration Overview

If using a Mira Connect appliance, you will use Mira Connect's remote control feature to add room control to the Poly Studio Base Kit G9 Plus.

If *not* using a Mira Connect appliance, Aveo Systems' Mira Connect Software can run on the Windows-based HP Mini IP Conferencing PC and provide the Mira Connect user interface on the Poly Studio Base Kit G9 Plus touch panel.

**Note:** Only one of Mira Connect appliance or Mira Connect Software is required to add room controls to the Poly Studio Base Kit G9 Plus.

Aveo Systems' Mira Connect Software will run on the Windows-based HP Mini IP Conferencing PC and provide the Mira Connect user interface on the [Poly Studio Base Kit G9 Plus](#) touch panel.

The user interface (UI) is rendered on the touch panel using a software plugin from [MAXHUB](#). The MAXHUB Align application is configured by adding the URL of the Mira Connect [remote control](#) feature, as described in this document.

**Note:** While Poly has a camera plug-in for Microsoft Teams Rooms, this plug-in does not support adding AV control and must be disabled. The MAXHUB Plug-in and MAXHUB Align applications provide a path for adding Mira Connect Software room controls to the Poly Studio Base Kit G9 Plus.

The [MAXHUB Plug-in](#) and the [MAXHUB Align](#) applications must be downloaded to the Poly Studio Kit G9 Plus processor and installed as part of this integration. These applications allow the Microsoft Teams Rooms to show the Mira Connect user interface on the touch panel.



**Figure 3:** To access the Mira Connect user interface, press the Room Controls icon on the Microsoft Teams interface.

To use Mira Connect's remote control feature on the Poly Studio Base Kit G9 Plus, you will follow the steps in this document. An overview of the steps is described here:

- If using Mira Connect Software, download and install Mira Connect Software onto the HP Mini IP Conferencing PC. Once installed, request a pairing code from the HP Mini IP Conferencing PC's browser to associate the Mira Connect Software with a room configured in Mira Portal, the management platform for Mira Connect. Note that if you are using Mira Connect appliance, you can ignore the sections about installing Mira Connect Software.
- Create a Mira Portal account, set up an organization, site, and room in your Mira Portal dashboard, and then use the pairing code to associate the Mira Connect Software with the room you've created in Mira Portal. Because your account is being used to configure the controls the Mira Connect system, it is considered an *Admin* account.
- Within Mira Portal, add equipment to the room that you want Mira Connect to control. For every product supported by Mira Connect, there is an integration guide that provides step-by-step instructions on how to integrate the product with Mira Connect. Mira Connect Software is free to download from Aveo Systems' website. When you're ready to control actual equipment, a Room License can be purchased.
- Record the Mira Connect remote control URL that shows the user interface in a browser. You'll need it for the final step.
- Create a separate Mira Portal account for the Poly Studio Base Kit G9 Plus. Other Poly Studio Base Kit G9 Plus in the organization or site can also use this same account. You will go back to your *Admin* Mira Portal account and, at the organization level, you will assign the Poly Studio Base Kit G9 Plus account with *Help Desk* permissions. This level of permissions will allow remote access to the user interface for the Mira Connect Software running on an Poly Studio Base Kit G9 Plus but will not allow any changes to be made to your Mira Connect configurations.
- Disable the Poly Lens camera control.

- Run the MAXHUB Align software on the HP Mini IP Conferencing PC and add Mira Connect's Remote Control URL to the MAXHUB Align application.

The result is that users can press the **Room Controls** button on the Poly Studio Base Kit G9 Plus touch panel to access the Mira Connect AV Control user interface and control equipment directly from the Poly Studio Base Kit G9 Plus touch panel.

## Detailed Integration Steps

To integrate Aveo Systems' Mira Connect Software with the Poly Studio Base Kit G9 Plus system, follow these steps. The steps are detailed in the following sections to make it easy to follow along.

1. [Configure the Poly Studio Base Kit G9 Plus](#)
2. [Navigate to the HP Mini IP Conferencing PC settings](#)
3. [Download Mira Connect Software to the HP Mini IP Conferencing PC](#)
4. [Install Mira Connect Software](#)
5. [Get a Pairing Code](#)
6. [Add a Room to Mira Portal](#)
7. [Pair Mira Connect Software to the Room in Mira Portal](#)
8. [Add Equipment to the Room](#)
9. [Get the Remote Control URL](#)
10. [Create a Mira Portal account for the HP Mini IP Conferencing PC user](#)
11. [Assign Permissions to the HP Mini IP Conferencing PC Mira Portal user account](#)
12. [Disable Poly Lens Room Camera Control](#)
13. [Download and install the MAXHUB Plug-in and MAXHUB Align applications](#)
14. [Add the Remote Control URL to the MAXHUB Align application](#)
15. [Test the Room Controls](#)
16. [Add Mira Connect Finishing Touches](#)

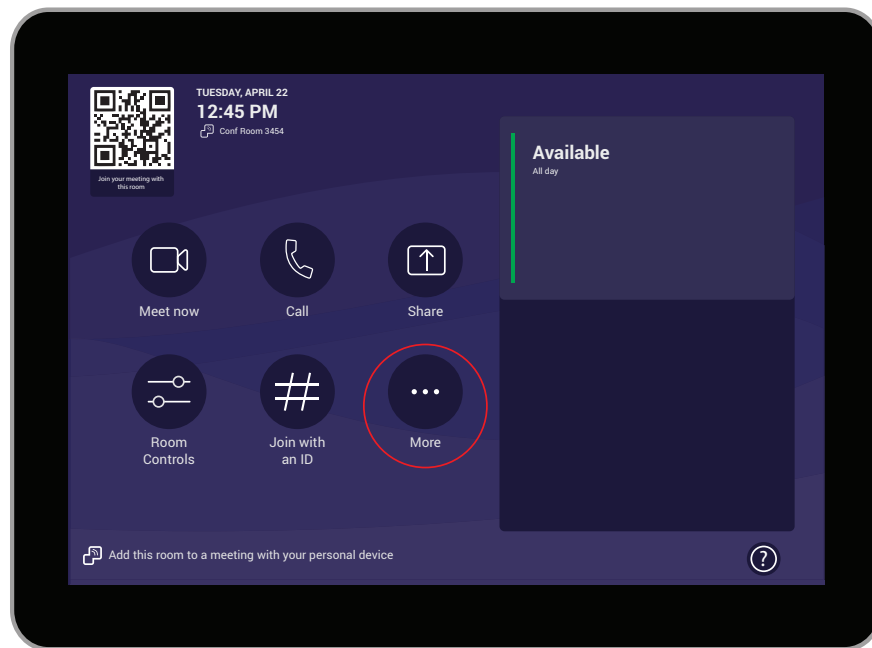
### Step 1. Configure the Poly Studio Base Kit G9 Plus

Power on the Poly Studio Base Kit G9 Plus and configure as necessary with your Microsoft Teams account. Follow the Poly Studio Base Kit G9 Plus instructions to integrate with your Microsoft Teams environment.

Once the Poly Studio Base Kit G9 Plus is configured and ready to join Microsoft Teams calls, then the Poly Studio Base Kit G9 Plus is ready for Mira Connect Software to be installed and for configuring the MAXHUB plug-in for room controls.

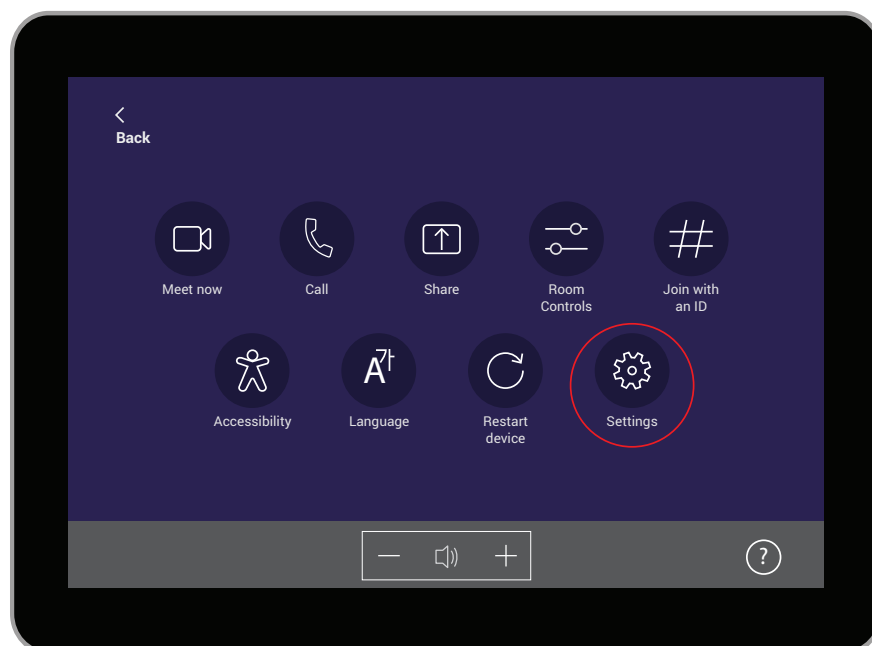
### Step 2. Navigate to the HP Mini IP Conferencing PC settings

From Poly Studio Base Kit G9 Plus's touch panel, press the **More...** icon to get to the Settings.



**Figure 4:** Select More... from the main screen.

Next, press the **Settings** icon.

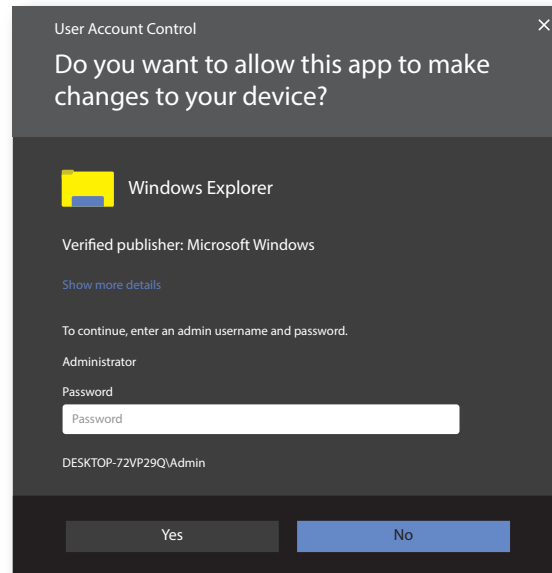


**Figure 5:** Select Settings to access the settings.

When prompted with the dialog: **“Do you want to allow this app to make changes to your device?”**, enter the default

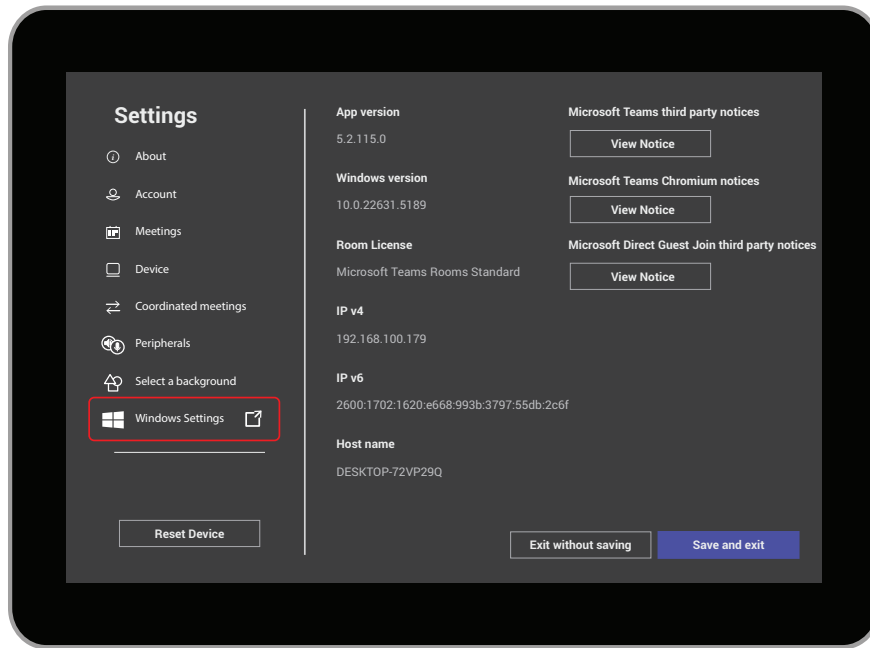
password of *sfb* and press Enter.

If your Microsoft Teams system has been configured with a different administrator password, please use that password instead.



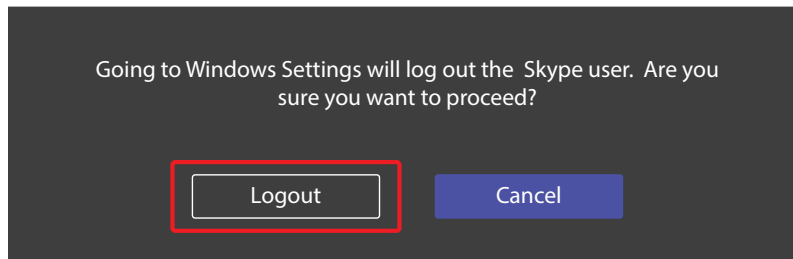
**Figure 6:** Enter the administrator password and select Yes.

Press **Windows Settings** to leave the Microsoft Teams application and access the Windows login screen.



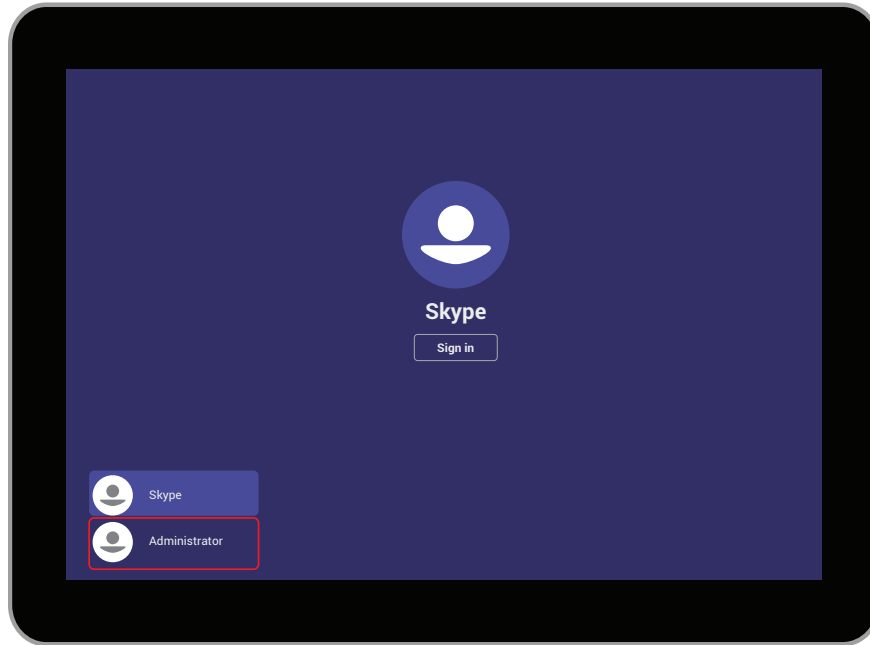
**Figure 7:** Select Windows Settings to log into Windows.

If prompted to logout as the Skype user, select **Logout** to continue.



**Figure 8:** Select Logout to access the Windows operating system.

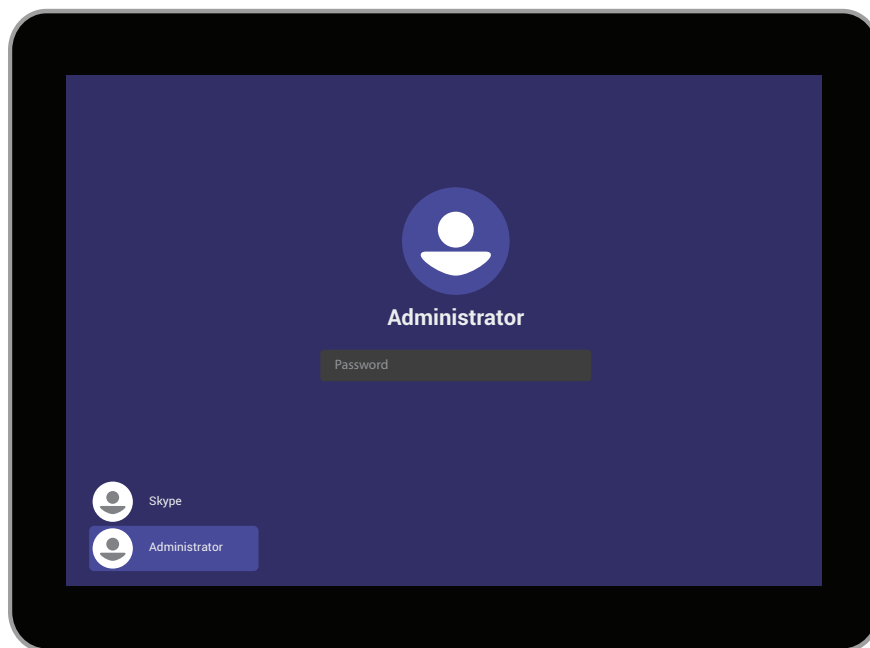
By default, the Skype user account will be selected. To log in as an administrator, select the **Administrator** user account.



**Figure 9:** Select the Administrator account.

Once the **Administrator** user account is selected, enter the administrator's password. The default password is *sfb*.

If your Microsoft Teams system has been configured with a different administrator password, please use that password instead.



**Figure 10:** To access the Windows operating system, enter the Administrator password.

The Windows operating system will appear on the touch panel and on the room's HDMI-connected display.

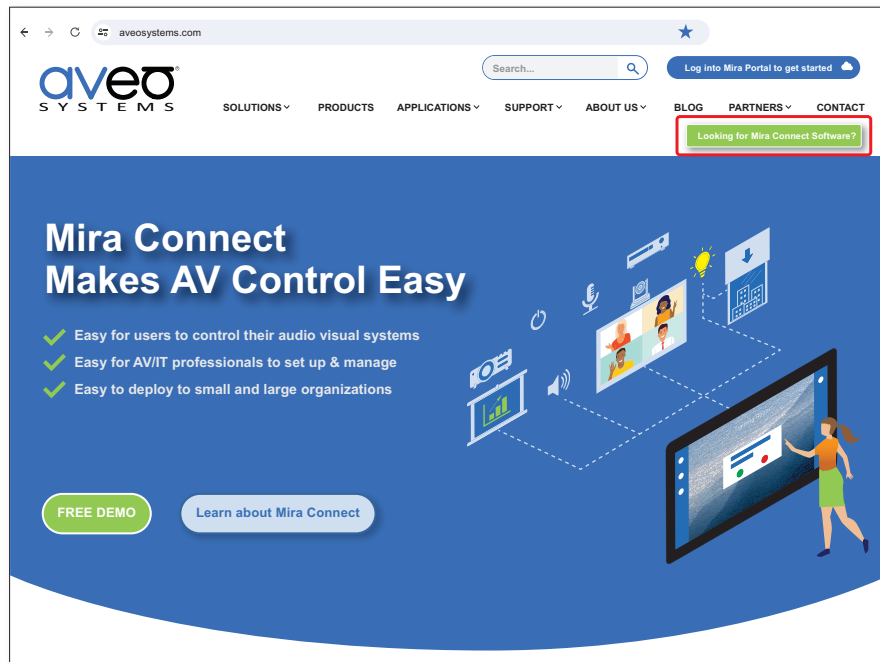
The Poly Studio Base Kit G9 Plus is now ready to have Mira Connect Software downloaded and installed.

### Step 3. Download Mira Connect Software to the HP Mini IP Conferencing PC

If using Mira Connect Software to add room controls, then on the HP Mini IP Conferencing PC, open the Microsoft Edge browser and navigate to **AveoSystems.com**.

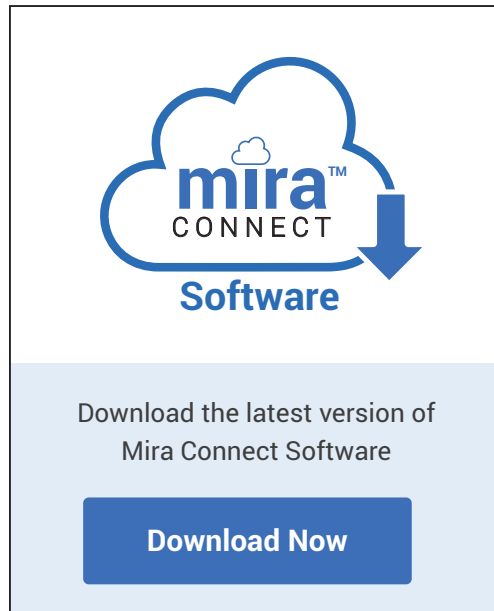
Click the green **Looking for Mira Connect Software** button to access the download page for Mira Connect Software.

Note: Mira Connect Software is available for Windows 10 and newer (Intel x64) computers, including the HP Mini IP Conferencing PC. There is no cost to download and install the software and use with simulated equipment. Mira Connect Software includes simulators for all equipment that Mira Connect can control, allowing you to build an interactive system with simulated equipment before you have real equipment. Aveo Systems' Mira Connect Software requires a room license to control real equipment. For more information about room licenses, see the [room license](#) guide.



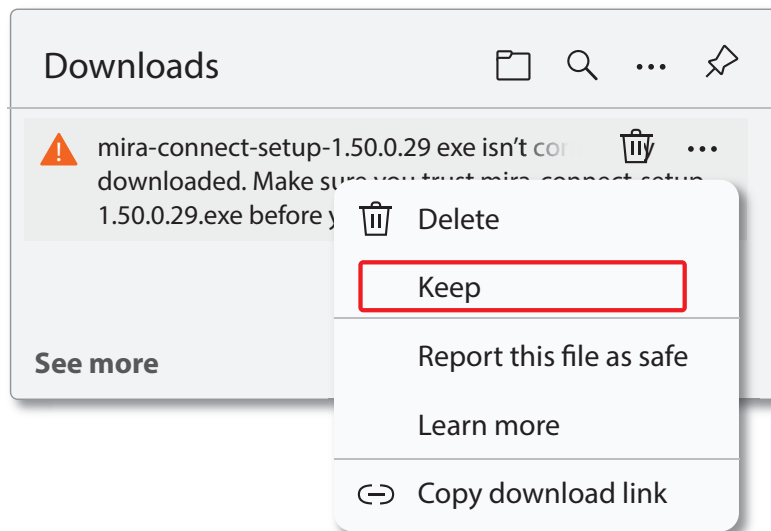
**Figure 11:** Download the Mira Connect Software from AveoSystems.com.

Next, click the **Download Now** button to download the latest version of Mira Connect Software. There is also a link to the Quick Install guide that includes additional information about installing and configuring Mira Connect Software on a Windows PC.



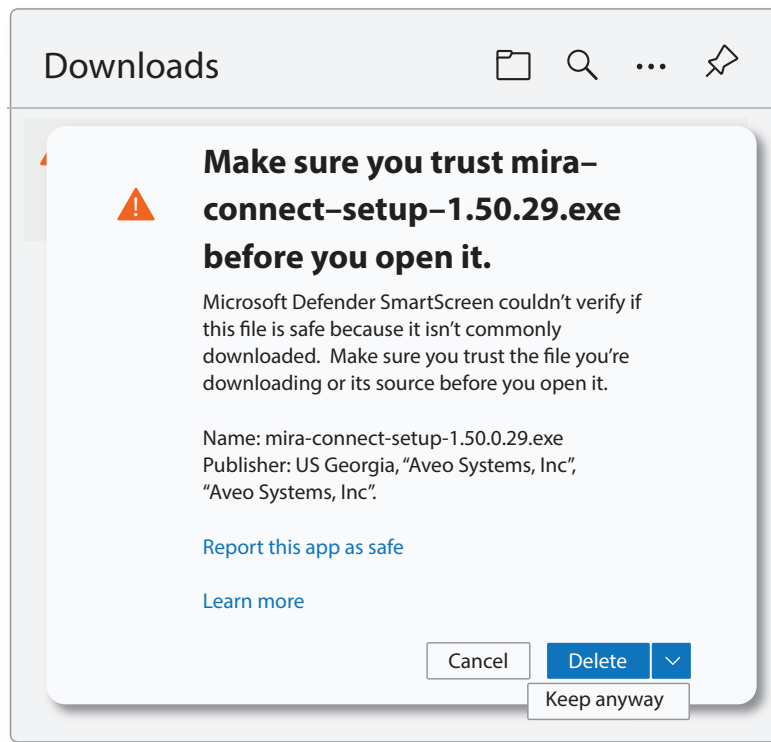
**Figure 12:** Download the latest version of Mira Connect Software.

If prompted that Mira Connect Software isn't commonly downloaded, select **Keep** to ensure the software is downloaded.



**Figure 13:** Select Keep to keep the Mira Connect Software download.

If prompted with an additional warning Mira Connect Software isn't commonly downloaded, expand the control next to the Delete button and select **Keep Anyway** to ensure the software is downloaded to the computer.



**Figure 14:** Select Keep Anyway to keep the Mira Connect Software download.

#### Step 4. Install Mira Connect Software

If using Mira Connect Software, then it must be installed by a user with 'administrator' privileges on the computer.

Open File Explorer and right-click on the Mira Connect Software download file and choose **Run as administrator** to install Mira Connect Software. By installing as an administrator, Mira Connect Software can run as a background service on the HP Mini IP Conferencing PC and also get updates automatically.

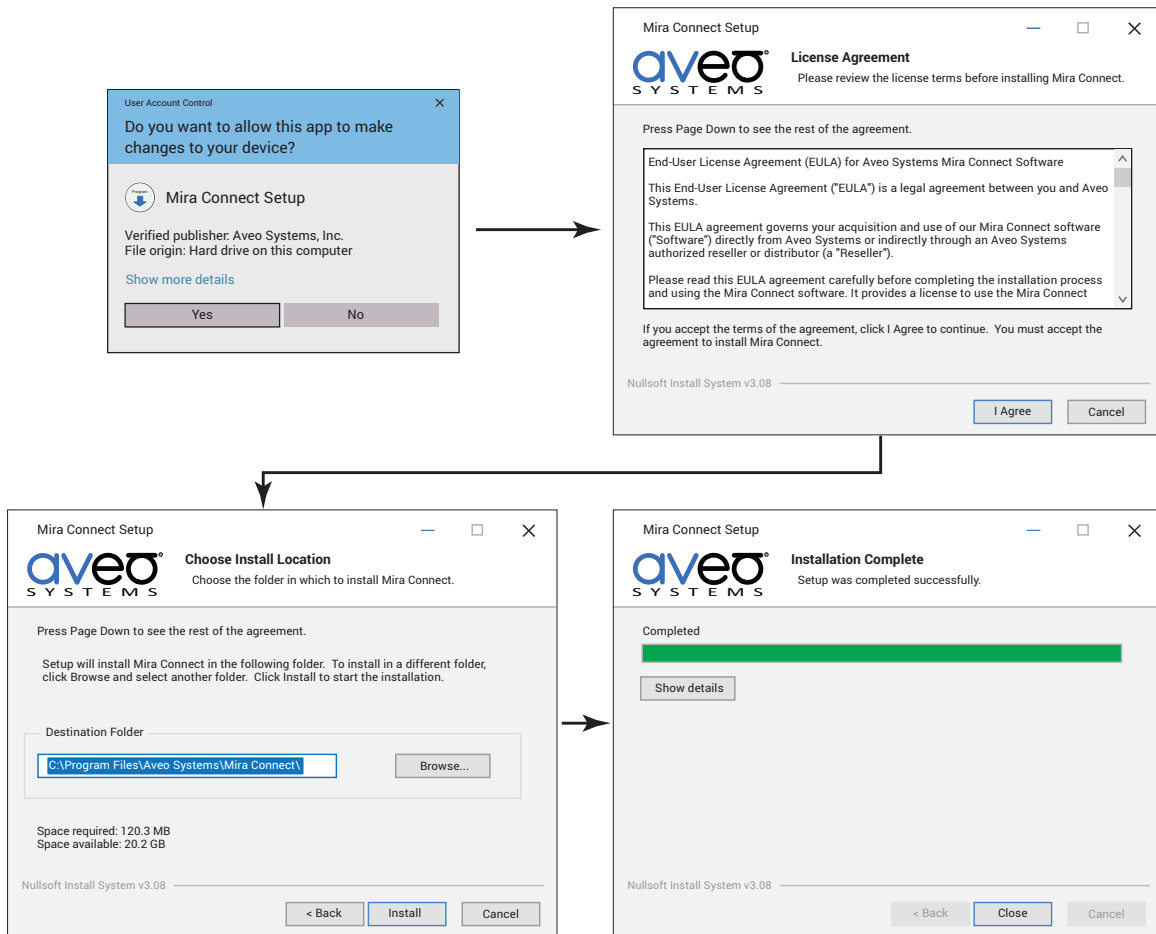
Confirm that you want to allow this app to make changes to your device.

A separate *Mira Connect service control* application is also installed that makes it easy to start and stop the service and configure room pairing with your room in Mira Portal.

For more information, see the [Mira Connect Software Quick Install Guide](#).

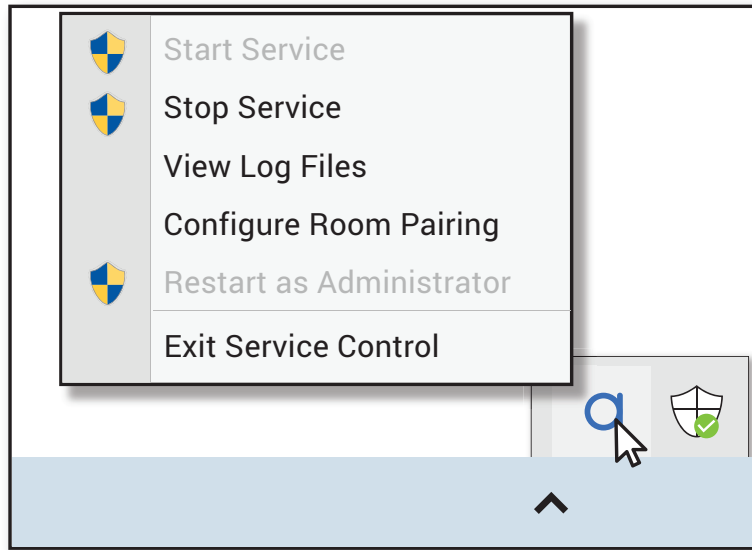
Follow the prompts to install Mira Connect Software. Once installed, click **Close**.

The Mira Connect Software application will start automatically in the background.



**Figure 15:** The Mira Connect Software installation screens.

You can check the status of the Mira Connect Software from the Aveo icon. You will use this option to configure room pairing in the next step.

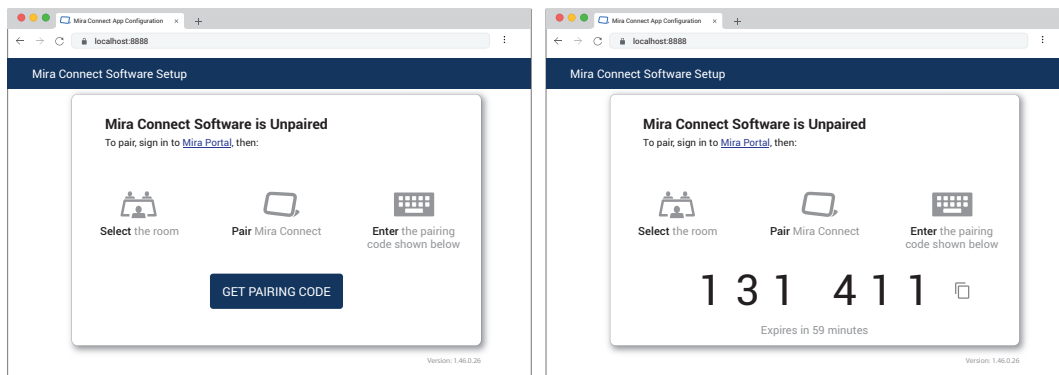


**Figure 16:** Use the Mira Connect service control application to check on the service status and to configure room pairing.

### Step 5. Get a Pairing Code

Choose **Configure Room Pairing** to open the pairing interface in your local browser. The computer must have internet access to get a pairing code from <https://mira.aveosystems.com>. For more information about the network requirements for Mira Portal, see our [network considerations](#) document.

The pairing code is valid for one hour, after which you can request a new pairing code. Once paired, you can unpair using the 'Unpair' option or unpair directly from Mira Portal.



**Figure 17:** Use the Mira Connect service control application to request a pairing code.

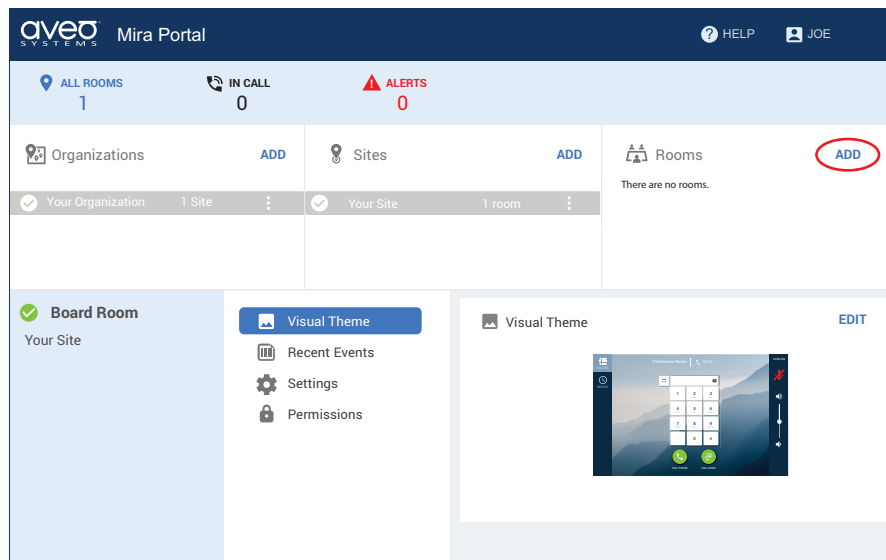
### Step 6. Add a Room to Mira Portal

Using your Mira Portal account, create an organization, site, and room in [Mira Portal](#), the online management platform for Mira Connect. If you don't have a Mira Portal account, create one now. After creating a Mira Portal account, follow the tutorial

to see how to create an organization, site, and room.

**Note:** In this step, you will use your Mira Portal account to create the organization, site, and room. In a future step, we'll create another Mira Portal account for the HP Mini IP Conferencing PC and provide permissions that will allow the HP Mini IP Conferencing PC to access the remote control features for this room.

While you can use any Mira Portal account with the Poly Studio Base Kit G9 Plus, a best practice is to use your *Admin* Mira Portal account to create the organization, site, and room in Mira Portal and to add equipment, and then assign *Help Desk* permissions through your account to the HP Mini IP Conferencing PC user account in Mira Portal.

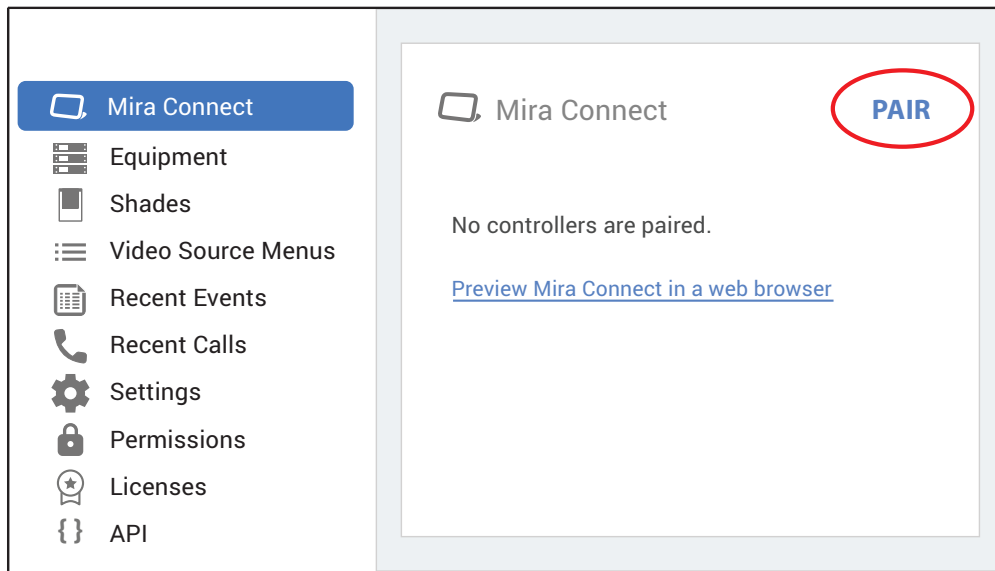


**Figure 18:** Click ADD to add a room to a site.

### Step 7. Pair Mira Connect Software to the Room in Mira Portal

Select the desired room, then the Mira Connect menu, and then click **PAIR** in Mira Portal. Enter the Mira Connect pairing code from a previous step to associate the Mira Connect Software control system with this room in Mira Portal.

Once paired, Mira Connect Software will attempt to connect to the equipment in the room. Since there is no equipment, you'll add equipment in the next step.



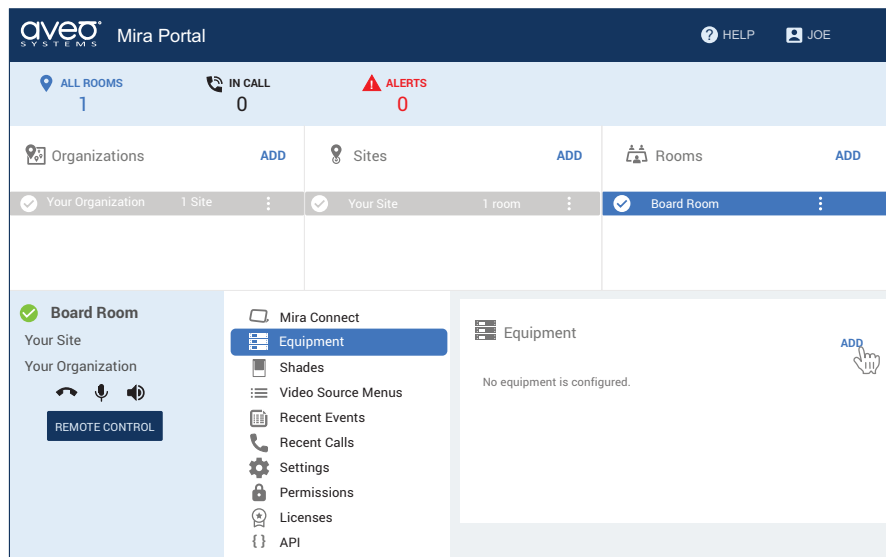
**Figure 19:** Click PAIR to enter the pairing code.

### Step 8. Add Equipment to the Room

Mira Connect can control displays, video switchers, VISCA cameras, lighting, shades, TV tuners, recorders/streamers, and more. See our [Supported Equipment](#) list with integration guides for other equipment.

For an example of how to get started, see our [short training videos](#) and see our [Getting Started](#) guide.

You may also customize the background image, logo, and colors by editing the visual theme at the Mira Portal site level. See the Mira Connect [Finishing Touches Guide](#) for more details.



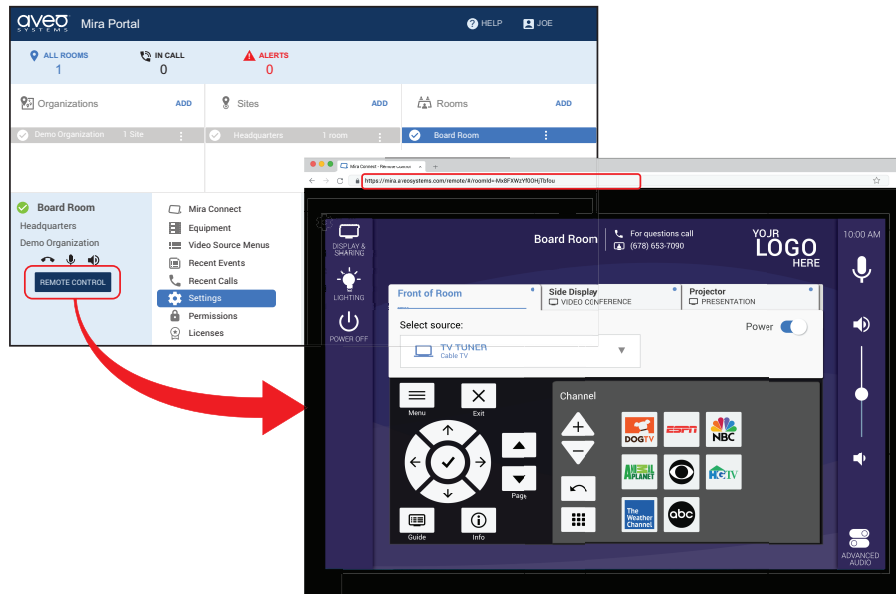
**Figure 20:** Add equipment to the room by selecting the Equipment tab and then clicking ADD.

### Step 9. Get the Remote Control URL

Select the room in Mira Portal and then click the **REMOTE CONTROL** button to open the remote control settings in a browser. If the remote control button is not active, then a [room license](#) is required to activate the remote control feature. Once a room license has been assigned to the organization and then assigned to the room, the Remote Control feature will be available.

Note: The remote control URL is unique to each room in Mira Portal. If configuring multiple Poly Studio Base Kit G9 Pluss, each one will have a different remote control URL.

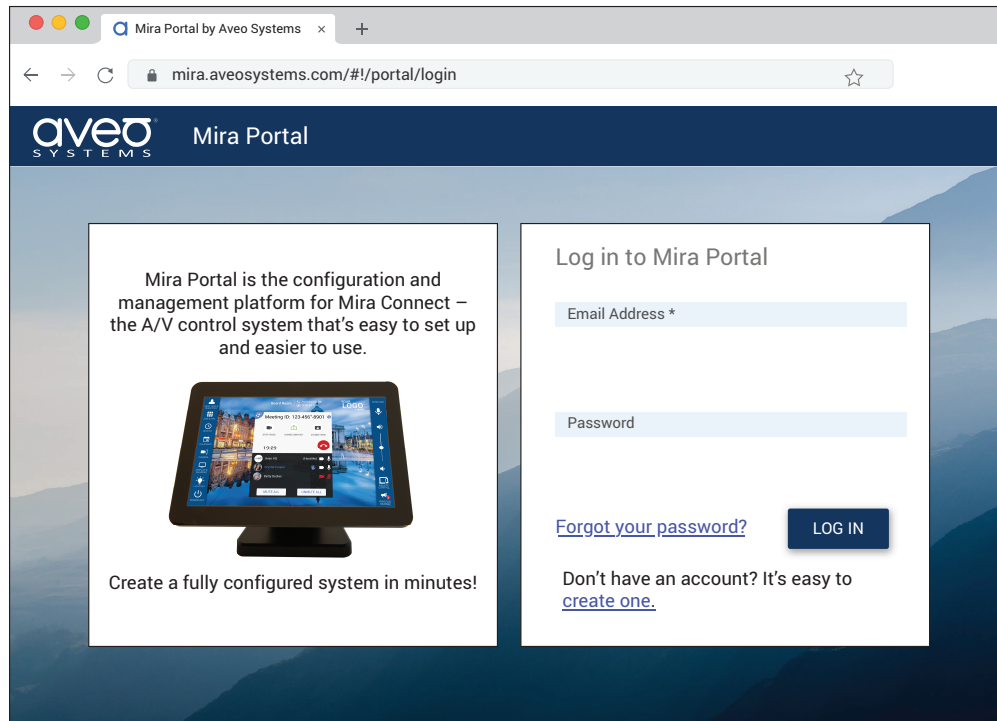
Copy the URL, as you'll need this to configure the MAXHUB Align Room Control option in an **upcoming step**.



**Figure 21:** Click the REMOTE CONTROL button to open your browser to the remote control URL.

### Step 10. Create a Mira Portal account for the HP Mini IP Conferencing PC user

Navigate to [Mira Portal](#) and create a new Mira Portal account for the HP Mini IP Conferencing PC user. You will use the HP Mini IP Conferencing PC Mira Portal username and password at a later step when we access the MAXHUB Room Control for the first time.



**Figure 22:** Click ‘create one’ to create a new Mira Portal account.

### Step 11. Assign Permissions to the HP Mini IP Conferencing PC Mira Portal user account

Log out of the HP Mini IP Conferencing PC Mira Portal account and log back into your *Admin* Mira Portal account.

Next, assign *Help Desk* permissions to the HP Mini IP Conferencing PC Mira Portal account from your *Admin* account.

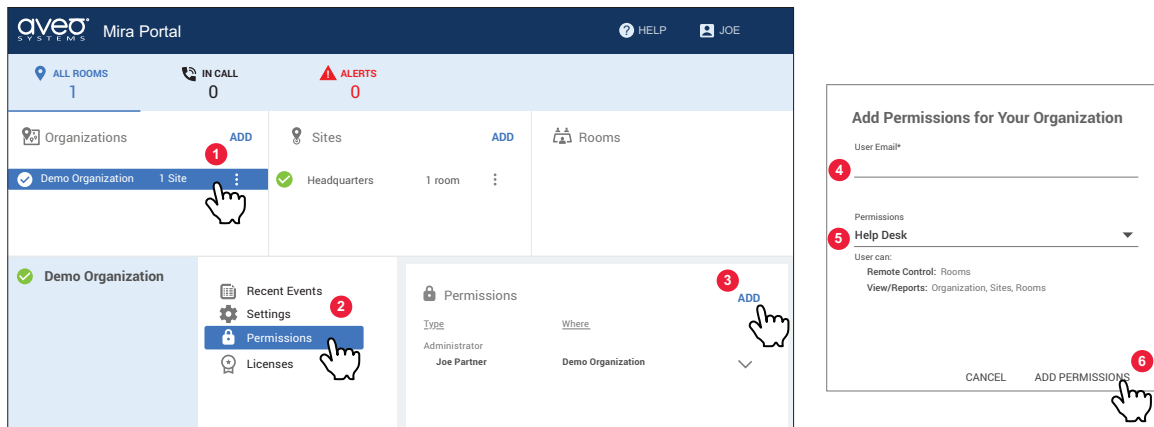
While there are four levels of permission used to manage organizations and sites within Mira Portal, it's a best practice to assign *Help Desk* permissions to the Poly Studio Base Kit G9 Plus to only allow access to the remote control features.

The Mira Portal permissions from least to most are as follows:

- *Reporting*: Provides read-only access to view system and equipment status.
- *Help Desk*: *Reporting* plus access to remote control and enabling real-time notifications of equipment issues.
- *Technical*: *Help Desk* plus can add, remove, and edit equipment and organization, site, and room settings.
- *Administrator*: *Technical* plus can assign permissions to other Mira Portal users.

*Technical* permissions are recommended for users who will be making changes to the control points or adding / removing equipment. *Administrator* permissions are recommended for users who need to assign permissions to other users.

To assign permissions to the organization, select the organization, select **Permissions**, then click **ADD**, and enter the email address and password associated with the HP Mini IP Conferencing PC's Mira Portal account. Select *Help Desk* permissions and click **ADD PERMISSIONS**.



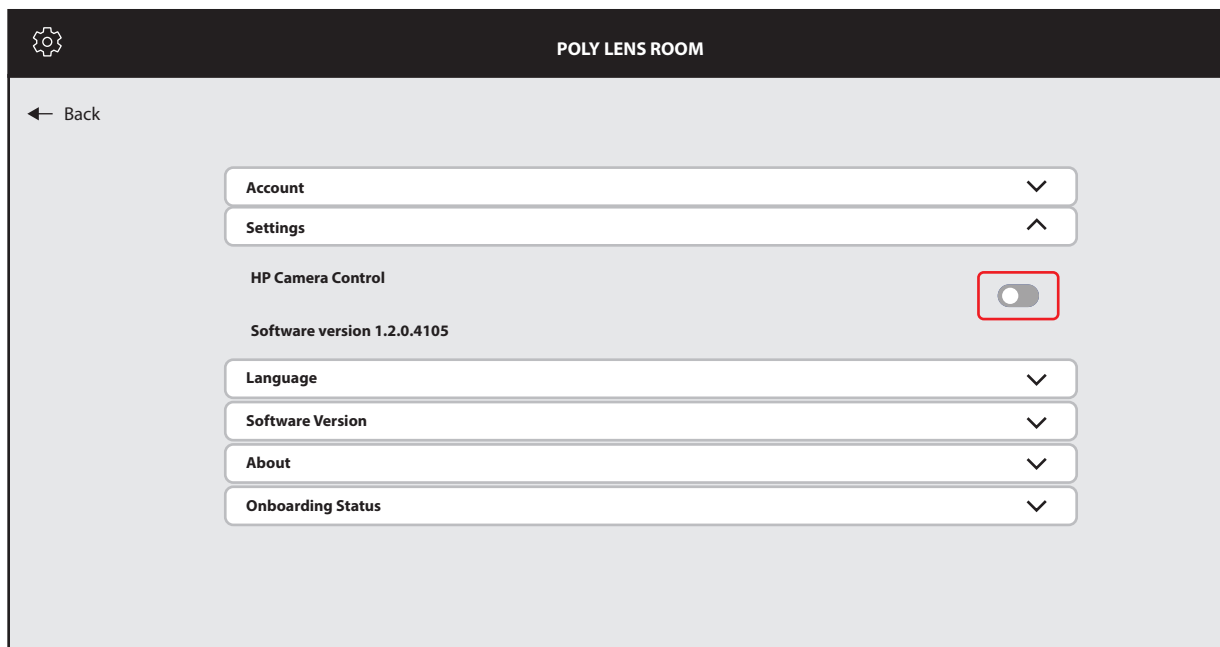
**Figure 23:** Follow these steps and add Help Desk permissions to the HP Mini IP Conferencing PC Mira Portal account.

## Step 12. Disable Poly Lens Room Camera Control

Poly's default Lens application is designed to allow camera control from the Microsoft Teams Rooms' **Room Controls** button. To add Mira Connect's AV room control, we must first disable the camera control. It is necessary to disable the Lens camera control before installing the MAXHUB Plug-in and MAXHUB Align applications.

Run the Lens application and navigate to Settings.

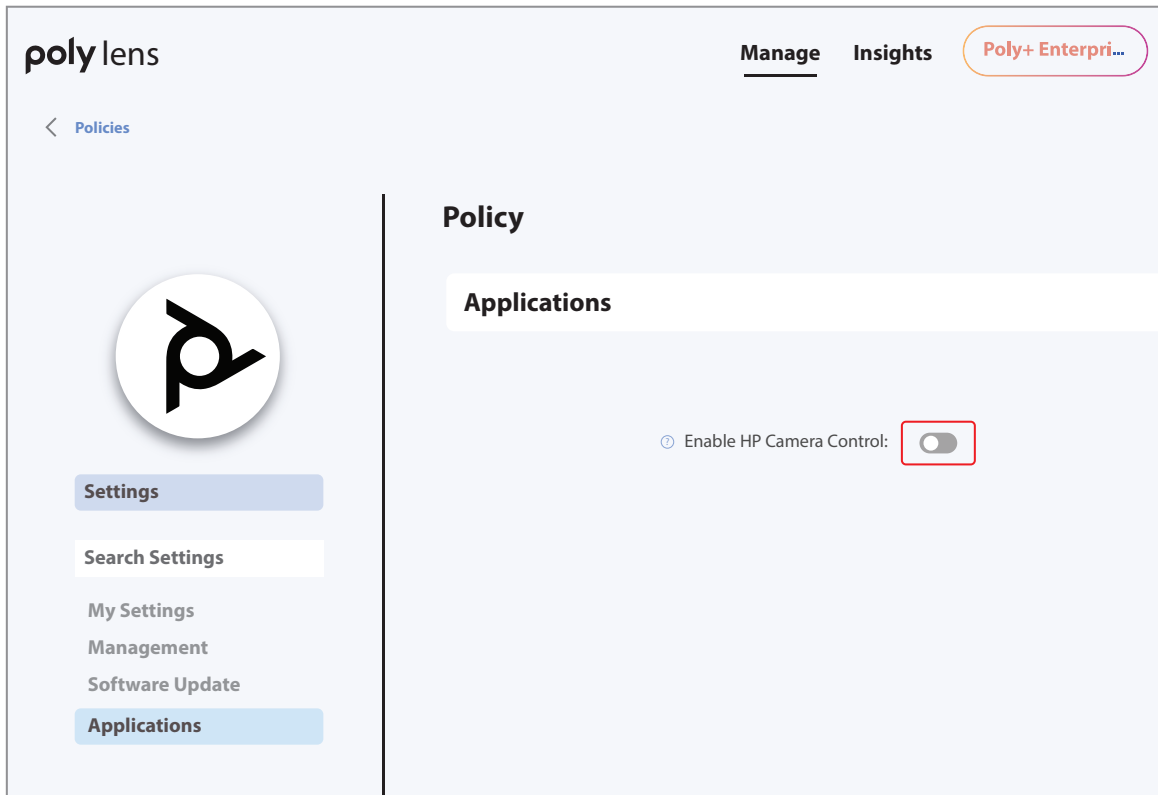
From Settings, turn off the camera control as shown in the following figure.



**Figure 24:** Disable the camera control in the Lens application.

**Important:** If the Lens Room instance is registered to Lens Enterprise or other management environment, make sure that

the HP Camera Controls are also disabled there otherwise the management provisioning may overwrite the local Lens Room settings.



**Figure 25:** Disable the camera control in the online Lens management environment.

### Step 13. Download and install the MAXHUB Plug-in and MAXHUB Align applications

The MAXHUB Plug-in and MAXHUB Align application makes it possible to add the Mira Connect remote control URL for accessing room control directly on the touch panel. Both applications are required to be installed.

**Note:** This step is only required if the MAXHUB Align application is not already installed on the system.

If the MAXHUB Plug-in and MAXHUB Align applications have not already been installed on the computer, then open the Microsoft Edge Browser and download the software from the following links: [MAXHUB Plug-in](#) and [MAXHUB Align](#) applications.

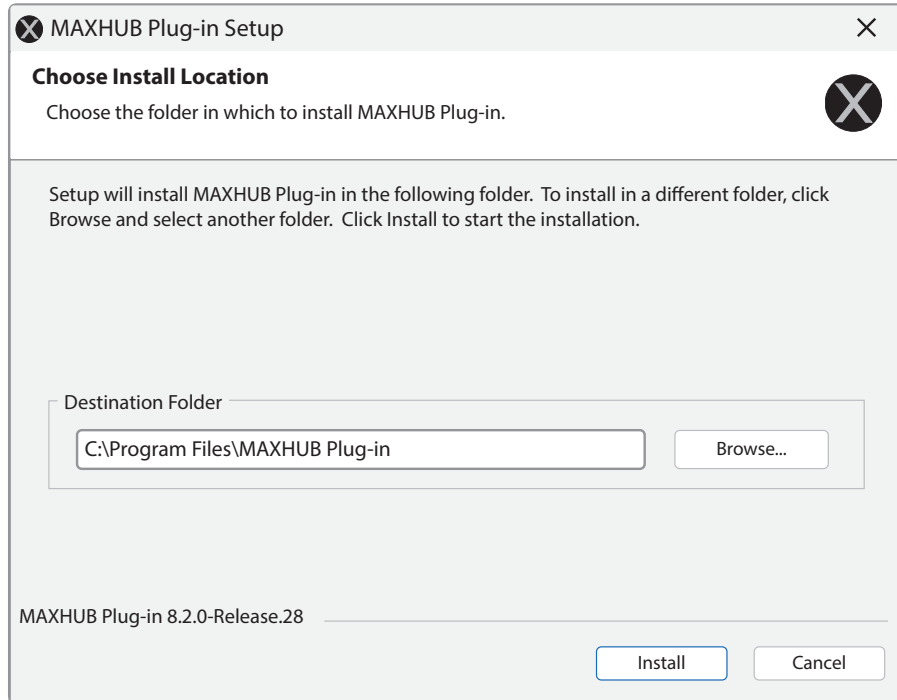
These links provide known working versions of the applications that can be easily configured. Once configured, a future step will let us update the MAXHUB Align application to the latest version.

**Important:** Use this version of the MAXHUB Plug-in. Do not update to a newer version the MAXHUB Plug-in until after it has been configured, otherwise you'll need to use the manual steps described later in this document.

Find the MAXHUB Plug-in and MAXHUB Align downloaded files in the Downloads directory and run *as an administrator* the downloaded MAXHUB Plug-in installation file.

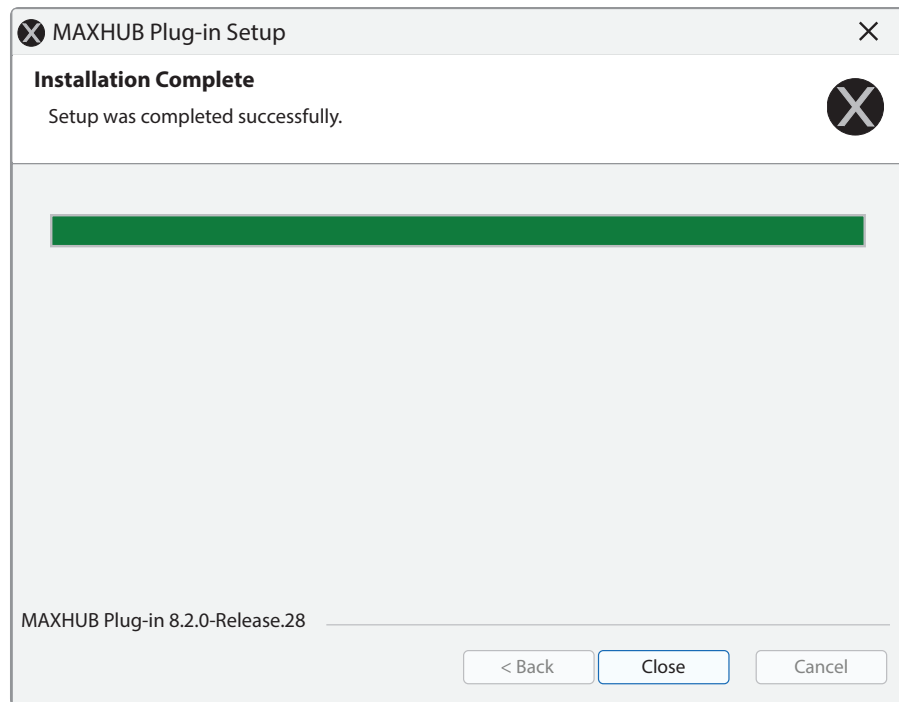
Note: It is important to choose 'run as an administrator' to ensure the MAXHUB Plug-in can operate as a background service on the HP Mini IP Conferencing PC.

Select the default folder where to install the MAXHUB Plug-in and click **Install** to start the installation.



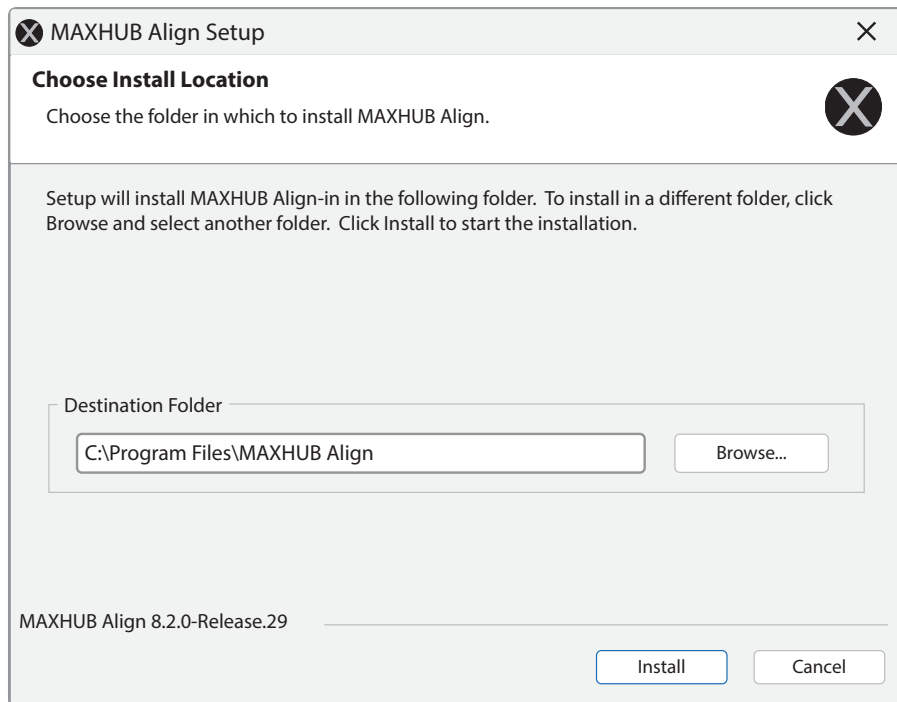
**Figure 26:** Start installing the MAXHUB Plug-in application by clicking Install.

Once complete, click **Close** to finish the installation.



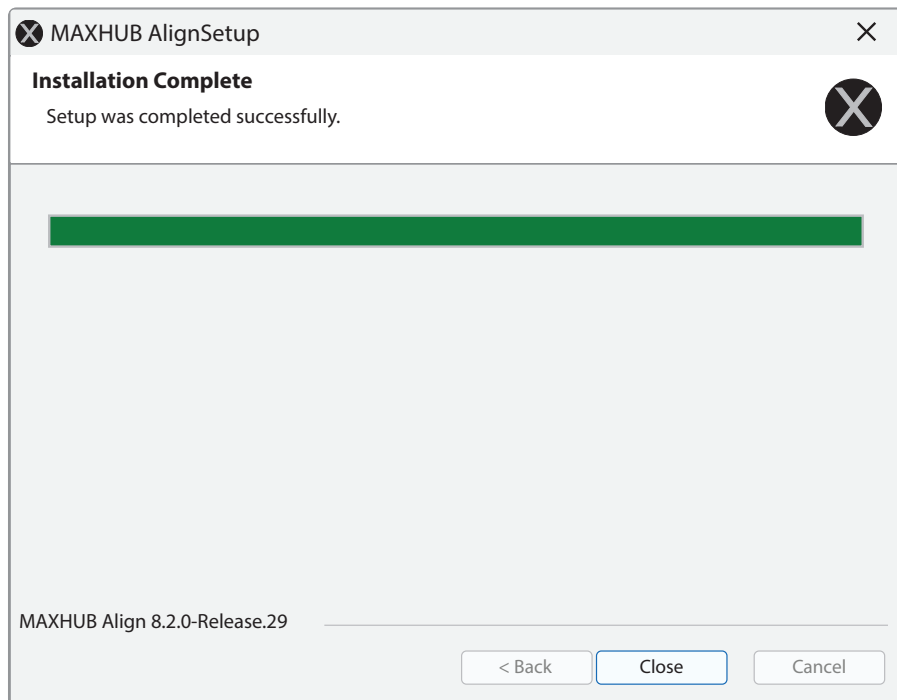
**Figure 27:** Click Close to finish the installation.

Find the MAXHUB Align downloaded file in the Downloads directory and run *as an administrator* the downloaded MAXHUB Align installation file. Select the default folder where to install the MAXHUB Align application and click **Install** to start the installation.



**Figure 28:** Start installing the MAXHUB Align application by clicking Install.

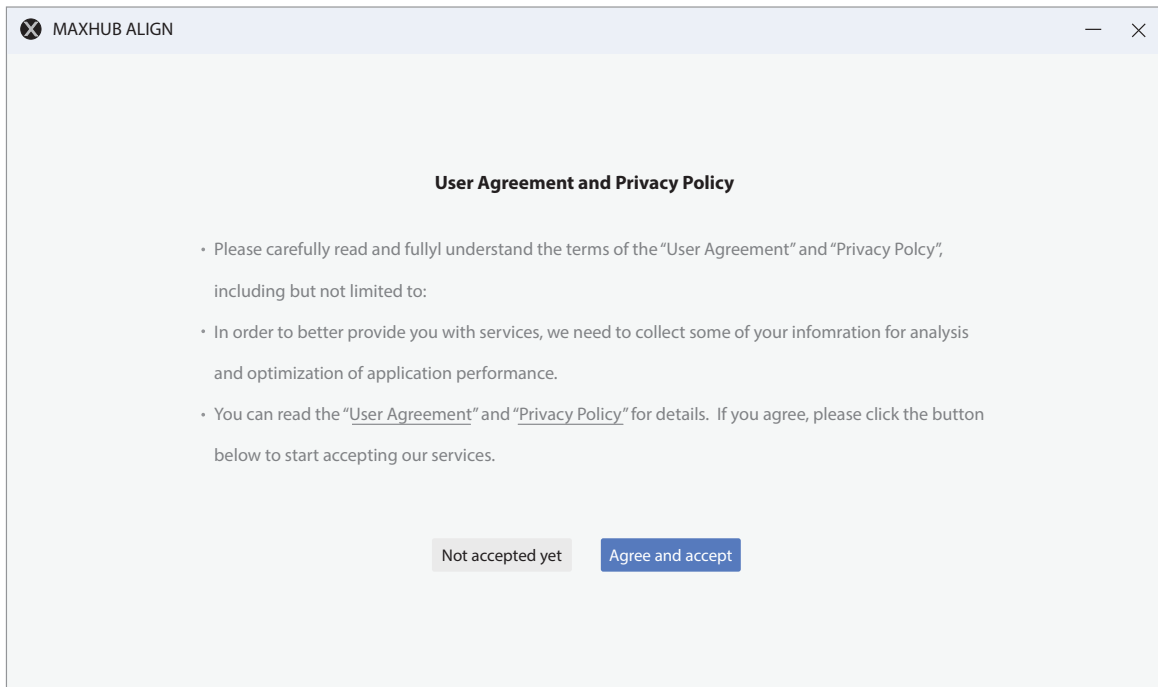
Once complete, click **Close** to finish the installation.



**Figure 29:** Click Close to finish the installation.

Run the MAXHUB Align application by double-clicking the MAXHUB Align application icon.

Review and accept the license and privacy policy.



**Figure 30:** Click Accept and agree to start the MAXHUB Align application.

If the MAXHUB Align application indicates it has found a newer version of the application, **do not update** yet to the newer version. Click **Cancel** when prompted to get the upgrade.

We'll continue setting up the MAXHUB Align application with the version that was downloaded. Once the setup has been finished, then we will update to a newer version.

Go back to **Step 13. Add the Remote Control URL** to finish configuring the MAXHUB Align application.

Once the MAXHUB Align application has been configured with the Mira Connect remote control URL, then you can restart the MAXHUB Align application and update to the latest version.

#### **Step 14. Add the Remote Control URL to the MAXHUB Align application**

Now that the HP Mini IP Conferencing PC user has *Help Desk* permissions on the desired room, you can configure the MAXHUB Align application.

If the touch panel is showing the Microsoft Teams user interface, follow the **instructions** provided previously to log into Windows as an administrator user.

From the Windows interface, if not already running the MAXHUB Align application, start the MAXHUB Align software by double-clicking the MAXHUB Align application icon.

**Note:** If the MAXHUB Align application is not installed, see **Step 13. Download and install the MAXHUB Plug-in and MAXHUB Align applications** and then continue from here.

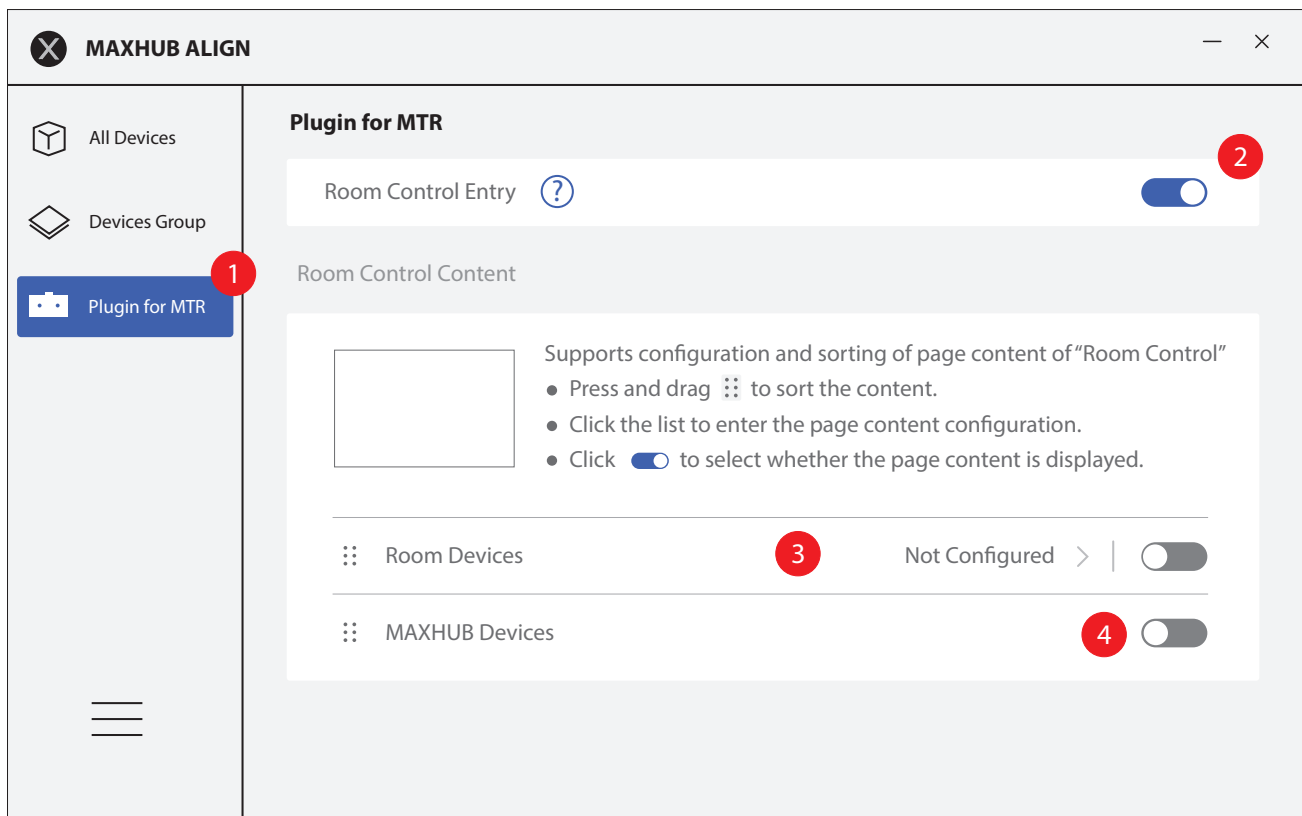


**Figure 31:** Run the MAXHUB Align application to configure the Room Control URL.

From the MAXHUB Align application, select **Plugin for MTR** (1), then enable the **Room Control Entry** (2) and then press in the **Room Devices** field (3) to enable the control. If not using MAXHUB devices (4), disable the MAXHUB Devices option.

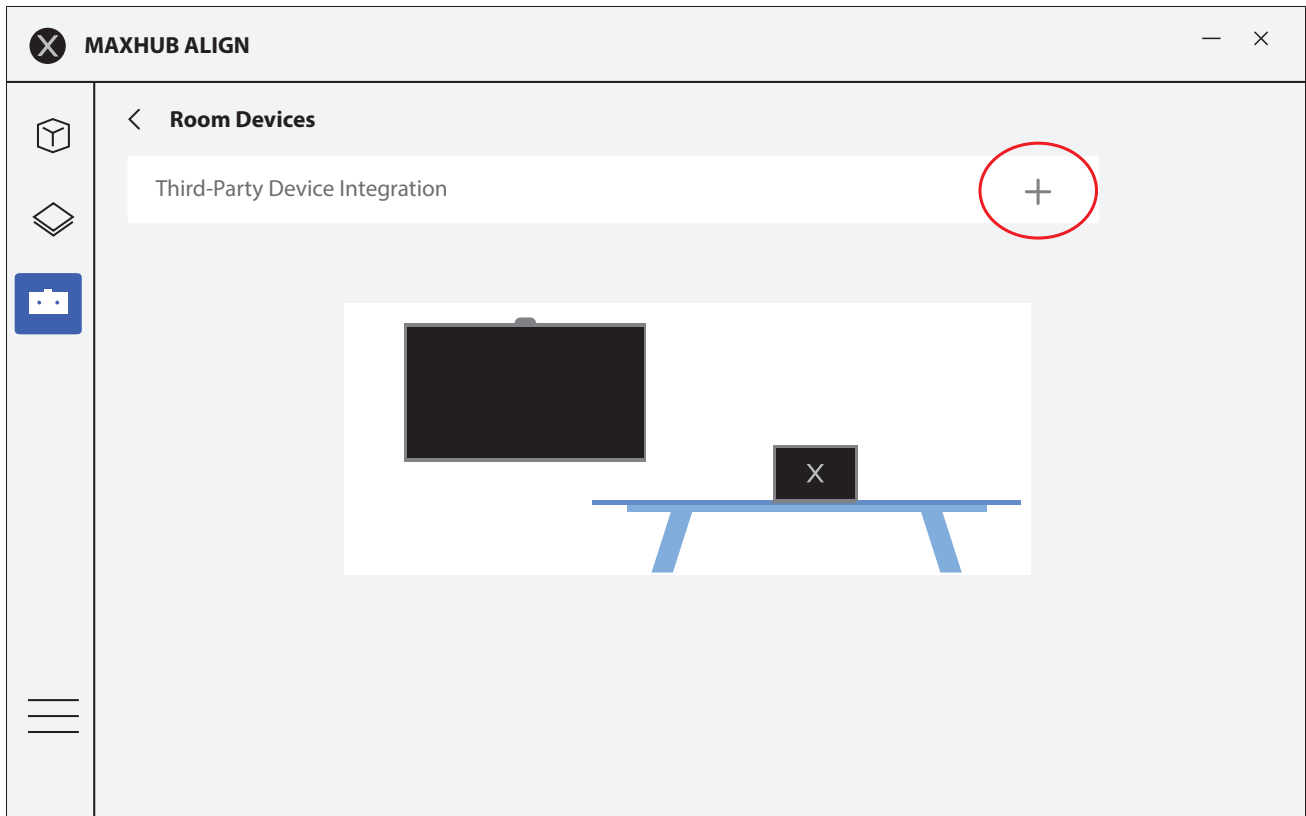
If prompted to reboot after the Room Control Entry has been enabled, then remember to reboot the system before trying to use the Room Controls from the Microsoft Teams user interface.

Note: If the MAXHUB Plug-in application is installed, but the **Plugin for MTR** option is not visible, see Section **Manually Configuring the MAXHUB Align settings**.



**Figure 32:** Select “Plugin for MTR”.

From the **Room Devices** page, click the **plus sign** to add a URL.



**Figure 33:** Select + to add a URL.

Enter, or copy and paste, the URL for Mira Connect's Remote Control.

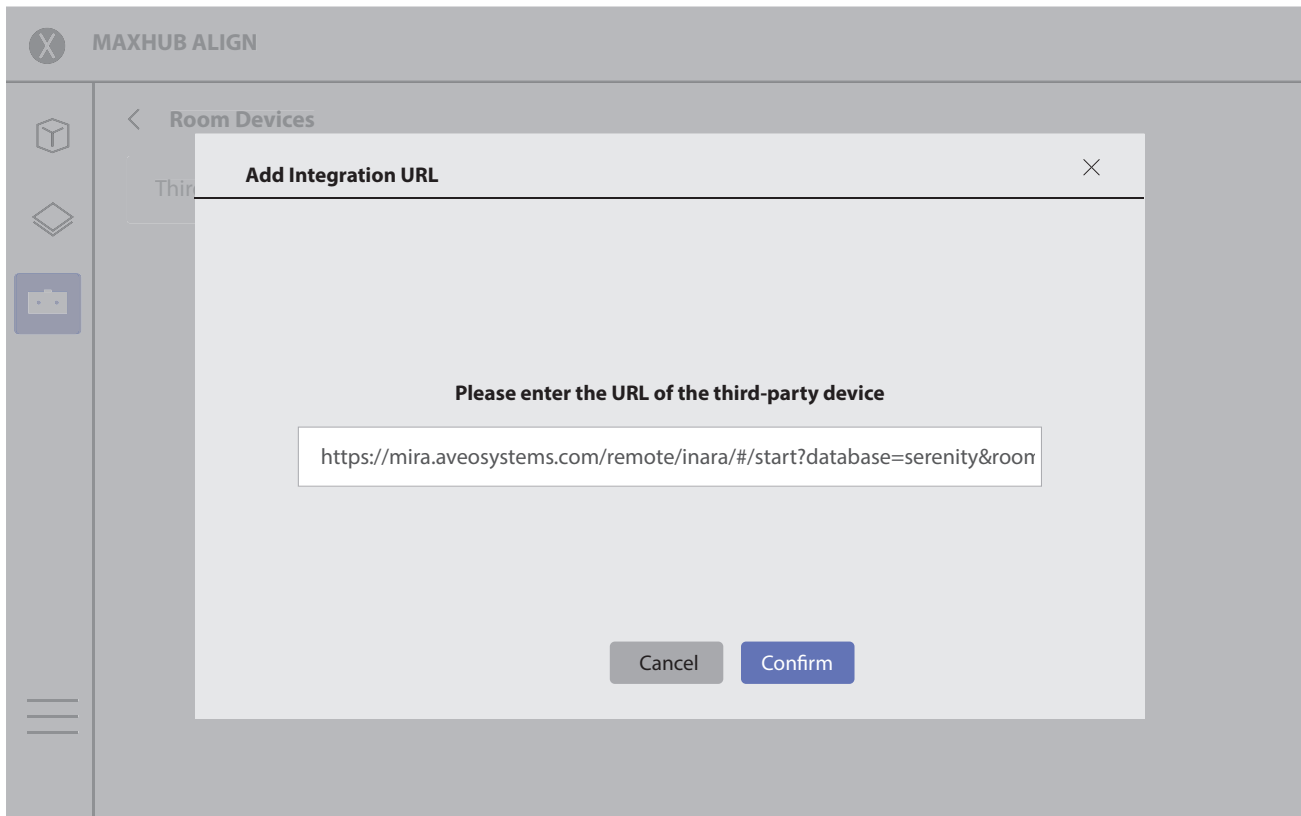
A typical Mira Connect remote control URL is as follows:

<https://mira.aveosystems.com/remote/#/start?database=serenity&roomId=-OPMY0iX9lb6IL7sfkt3>

To ensure the Mira Connect Remote control view appears full screen in the Room Control window presented on the MAXHUB touch panel, edit the Mira Connect Remote Control URL and add the characters **/inara** between *remote* and */#* as follows:

<https://mira.aveosystems.com/remote/inara/#/start?database=serenity&roomId=-OPMY0iX9lb6IL7sfkt3>

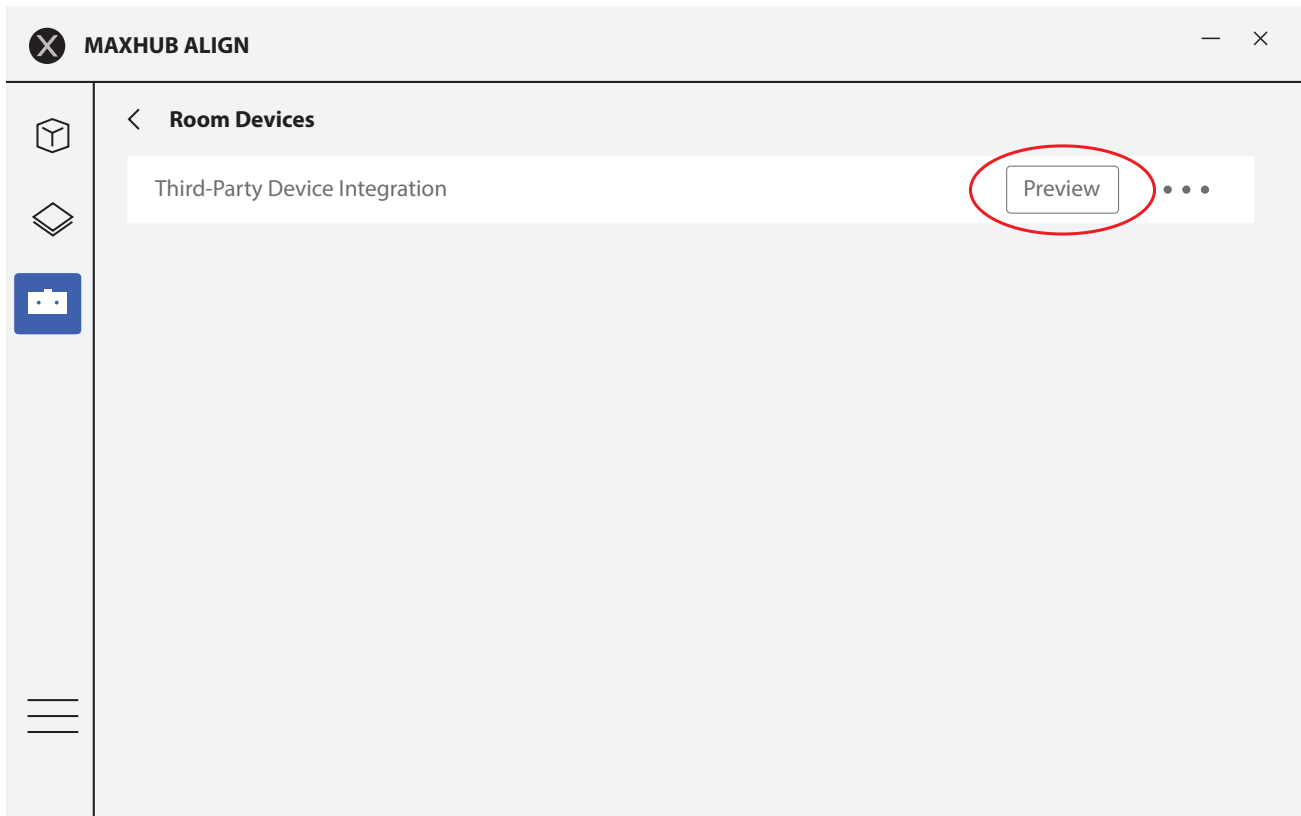
Note that roomId is lowercase room followed by a capital I and lowercase d.



**Figure 34:** Enter and edit the Mira Connect Remote Control URL that was shown in an earlier step.

After pressing **Confirm**, the Room Devices page will appear as shown in the following figure. Click the **Preview** button to preview the Mira Portal remote control user interface.

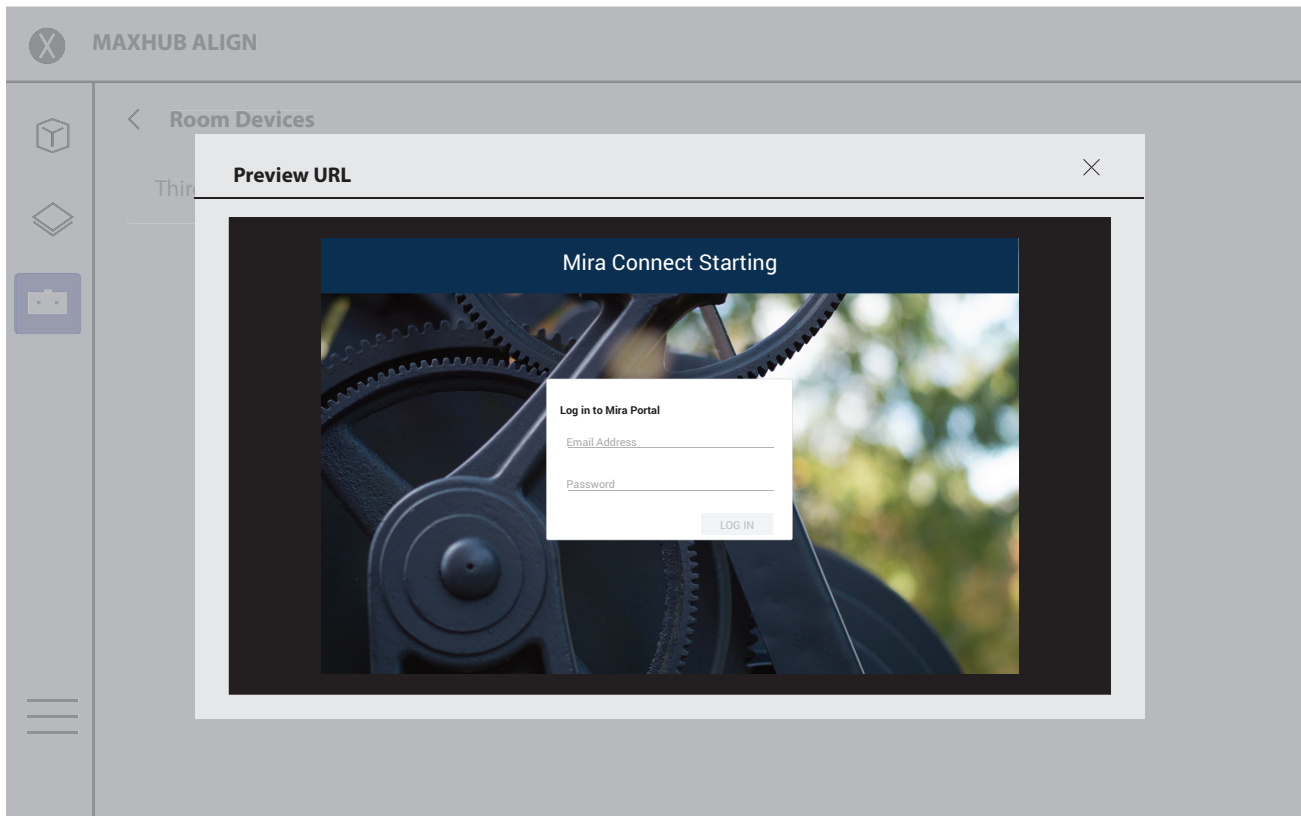
If the Mira Portal Remote Control user interface does not appear, check that the URL was entered correctly.



**Figure 35:** After entering the URL, preview the link to ensure the Mira Connect remote control page appears.

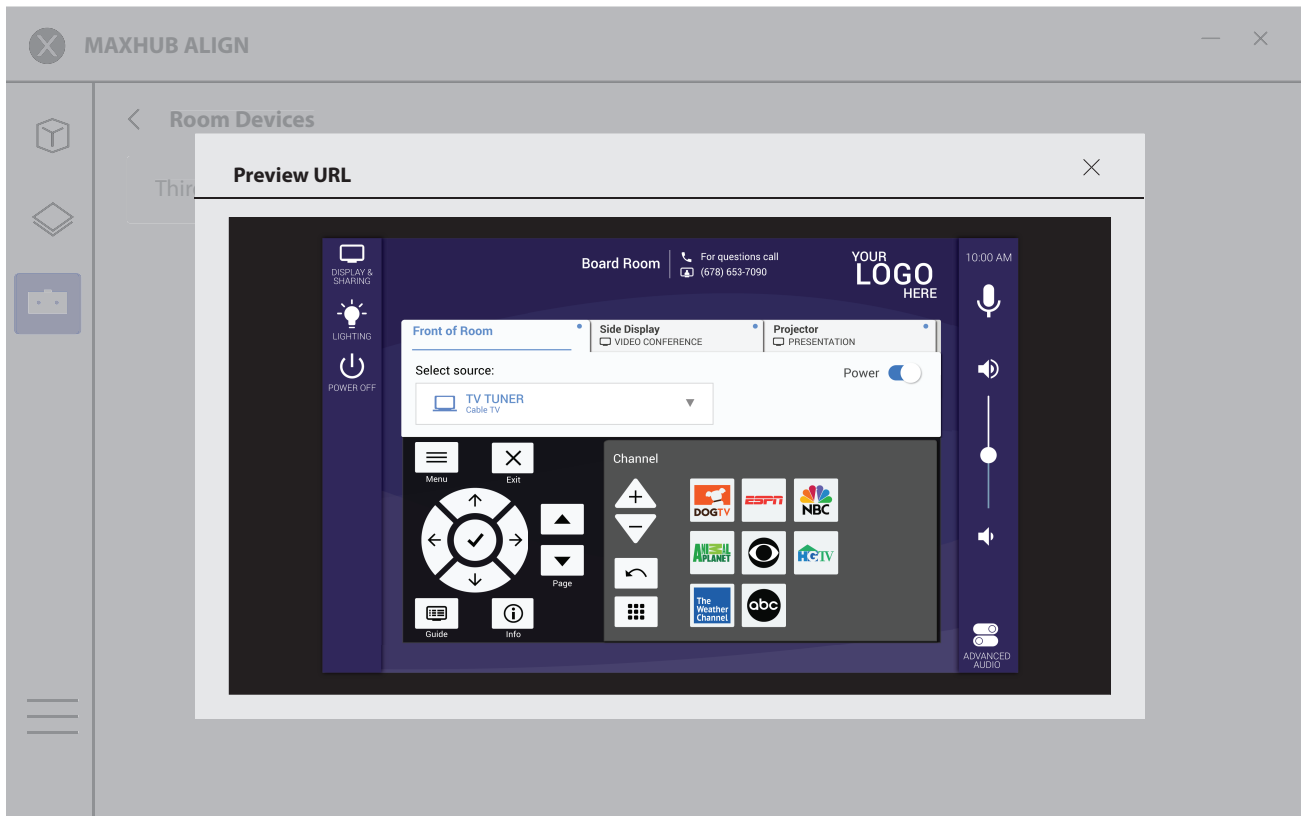
The first time the remote control URL is accessed, you will be prompted to enter the HP Mini IP Conferencing PC's Mira Portal account username and password.

If the username and password are entered incorrectly, or if the user doesn't have at least *Help Desk* permissions on the organization or site, an error message will appear on this page with additional information.



**Figure 36:** Enter the HP Mini IP Conferencing PC's Mira Portal username and password.

Once the username and password have been entered on the first access Mira Connect's remote control user interface will be shown. Subsequent accesses to the Remote Control page will show the room's Mira Connect user interface directly and will not require the login step.

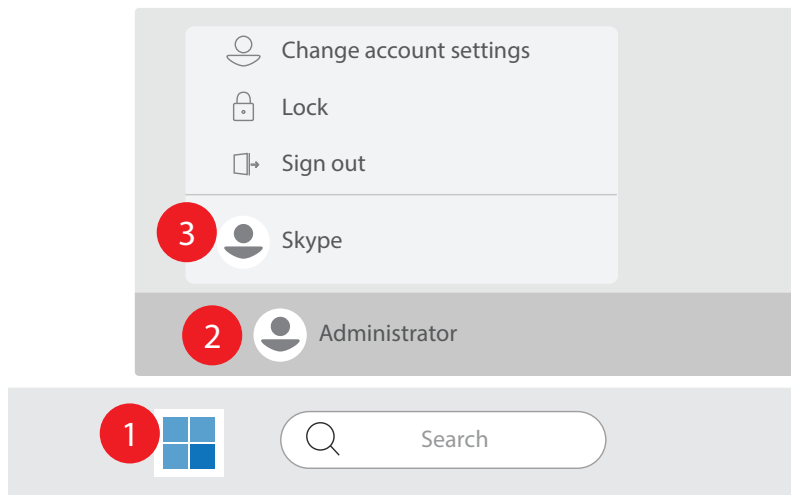


**Figure 37:** The Mira Connect user interface will appear on the Poly Studio Kit G9 Plus touch panel. The background image, sidebar menu bars, and logo can be customized by editing the Mira Portal Visual Theme at the Site level.

Once the Mira Connect remote control user interface appears, you can check for a newer version of the MAXHUB Align application by clicking the *About* option. If there is a newer version available, upgrade to the latest version. After the update, the MAXHUB Align application will close automatically.

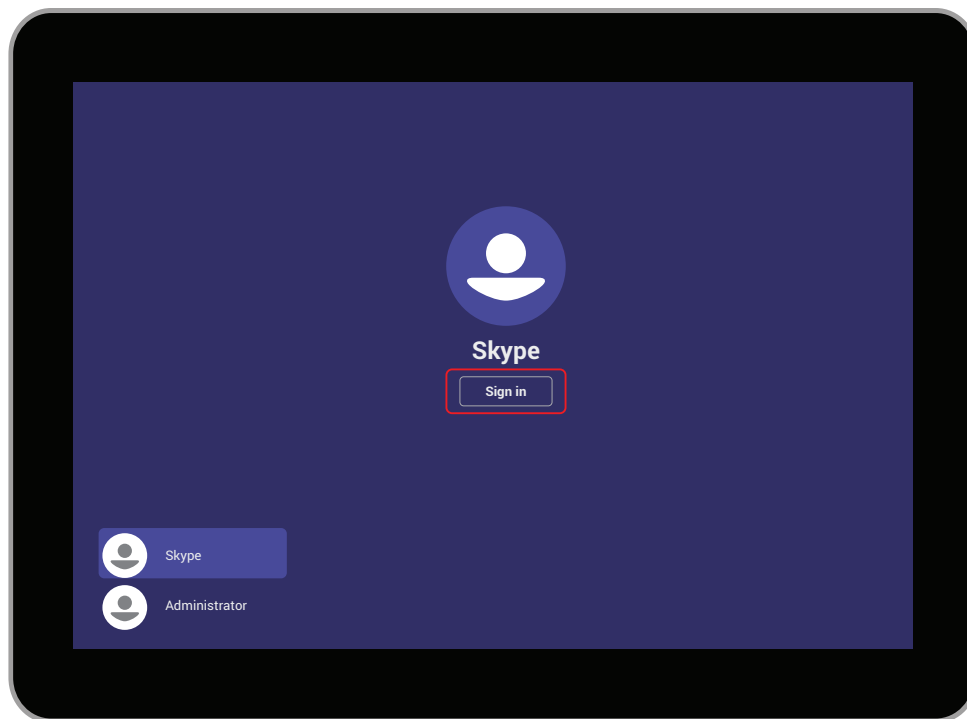
If there is no update, close the MAXHUB Align application, logout as an Administrator, and log back in as the Skype user.

Note: Remember to restart the system if prompted to earlier when the Room Devices field was enabled. Restarting the system will cause the system to reboot and start up showing the Microsoft Teams user interface. After a restart, it may take one or two minutes before the Mira Connect Software service is automatically restarted.



**Figure 38:** To login as the Skype user, select the Windows icon (1), select the Administrator user (2) and then select Skype user (3).

Select **Sign In** to login as the Skype user.



**Figure 39:** Select the Windows icon and then select Skype user.

The Microsoft Teams user interface will appear once logged in as the Skype user.

### Step 15. Test the Room Controls

Once configured, press the **Room Controls** button on the Microsoft Teams user interface to access the Mira Connect room control.

If the Mira Portal login prompt appears, enter the HP Mini IP Conferencing PC's' username and password.

Note: If the system was just restarted, it may take a minute or two before the Mira Connect Software service has restarted and is ready to control equipment.



**Figure 40:** To access the Mira Connect user interface, press the Room Controls icon on the Microsoft Teams interface.

The Mira Connect user interface will continue to show on the Poly Studio Base Kit G9 Plus touch panel as long as it is being used. If the user interface is not touched for 60 seconds, the system will revert back to the Microsoft Teams user interface.

To get back to the Room Controls user interface again, press the **Room Controls** icon on the Microsoft Teams UI.

### Step 16. Add Mira Connect Finishing Touches

Once the MAXHUB Room Controls URL has been configured, there are additional steps that can be taken to customize the look of the Mira Connect user interface.

See the [Finishing Touches Guide](#) for more information on how to customize the background image and logo, add a password to restrict access, and more.

## Manually Configuring the MAXHUB Align settings

Note: This step is only required if the version of the MAXHUB Align application does not show the **Plugin for MTR** option.

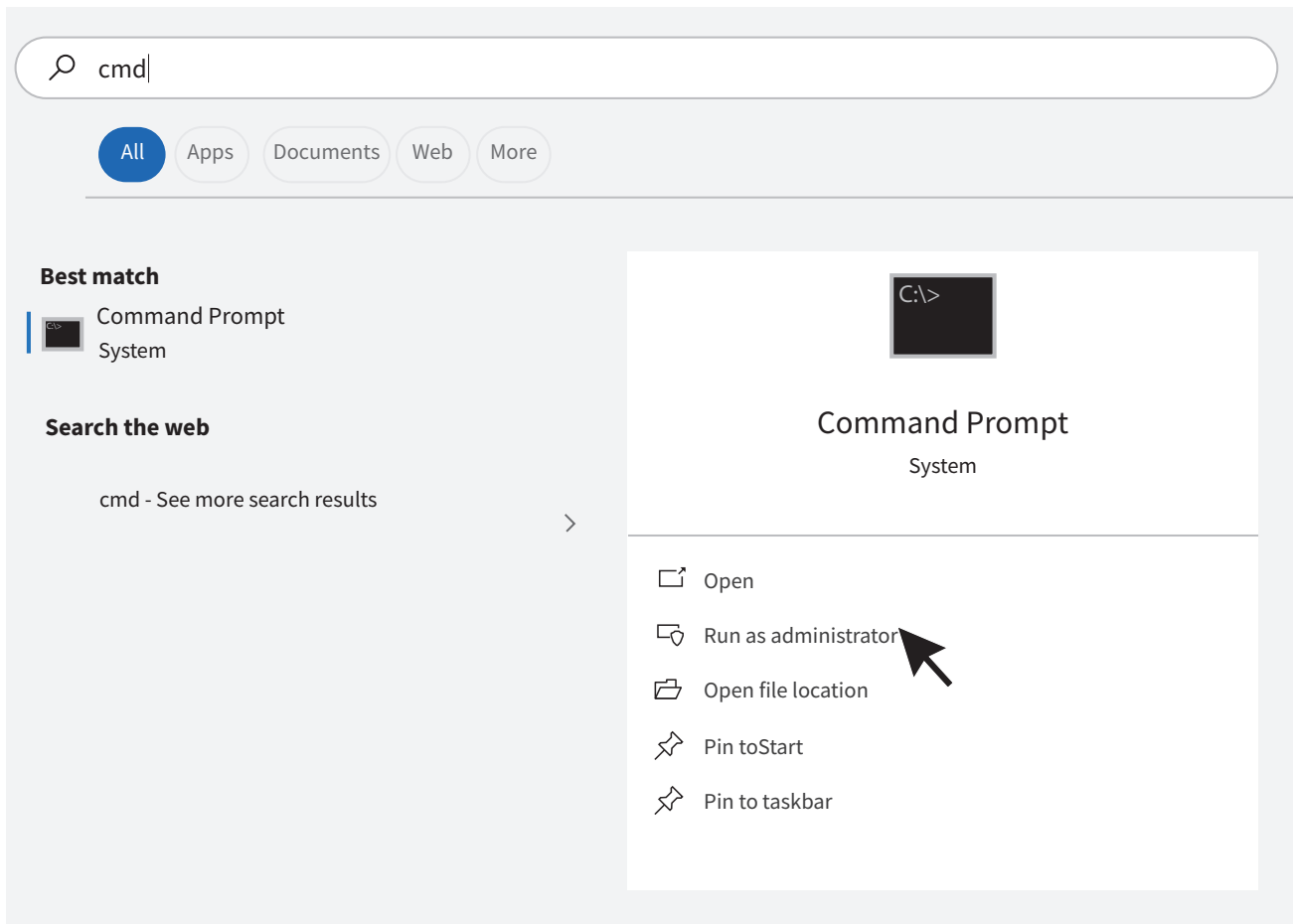
Run the MAXHUB Align application by double clicking on the MAXHUB Align icon.



**Figure 41:** Run the MAXHUB Align application to configure the Room Control URL.

After running the MAXHUB Align application, if the **Plugin for MTR** option is not shown, you will need to manually add the remote control URL to a MAXHUB configuration file directly.

To add the Mira Connect URL directly, click the Windows icon and search for cmd to find the **Command Prompt** application. Choose the 'Run as Administrator' option as shown in the following figure.



**Figure 42:** Run the command prompt as an administrator.

Change directories to C:\ProgramData\MAXHUB\MTR with the following command:

```
cd C:\ProgramData\MAXHUB\MTR
```

If this directory doesn't exist, then create the directory with the following commands:

```
cd \  
mkdir ProgramData  
cd ProgramData  
mkdir MAXHUB  
cd MAXHUB  
mkdir MTR  
cd MTR
```

Note: In this step use the remote control URL your room in Mira Portal. While this example shows the roomId of -OPMYOix9lb6IL7sfkt3, your room will have a unique roomId.

In this step, we'll need the URL for Mira Connect's Remote Control as described previously.

A typical Mira Connect remote control URL is as follows:

`https://mira.aveosystems.com/remote/#!/start?database=serenity&roomId=-OPMY0iX9lb6IL7sfmt3`

To ensure the Mira Connect Remote control view appears full screen in the Room Control window presented on the touch panel, edit the Mira Connect Remote Control URL and add the characters **/inara** between *remote* and */#* as follows:

`https://mira.aveosystems.com/remote/inara/#!/start?database=serenity&roomId=-OPMY0iX9lb6IL7sfmt3`

---

From the C:\ProgramData\MAXHUB\MTR directory, use the notepad application to new file called mira.json.

Run the command: `notepad mira.json` to open notepad. Click **Yes** to confirm creating the new file.

Copy the contents of this code block into the file mira.json, using your unique Mira Connect remote control URL as described above. You can also download the example [mira.json](#) file. Make sure you change the room ID to match your room ID.

```
{
  "friDaySwitch": true,
  "changeTime": 1761013522061,
  "controlRoom": {
    "url": "https://mira.aveosystems.com/remote/inara/#!/start?database=serenity&roomId=-OPMY0iX9lb6IL7sfmt3",
  },
  "menuList": [
    {
      "key": 1,
      "visible": false
    },
    {
      "key": 2,
      "visible": true
    }
  ]
}
```

Save the file to mira.json.

At the command line prompt of C:\ProgramData\MAXHUB\MTR>, copy the mira.json to db.json using the command:

`copy mira.json db.json`

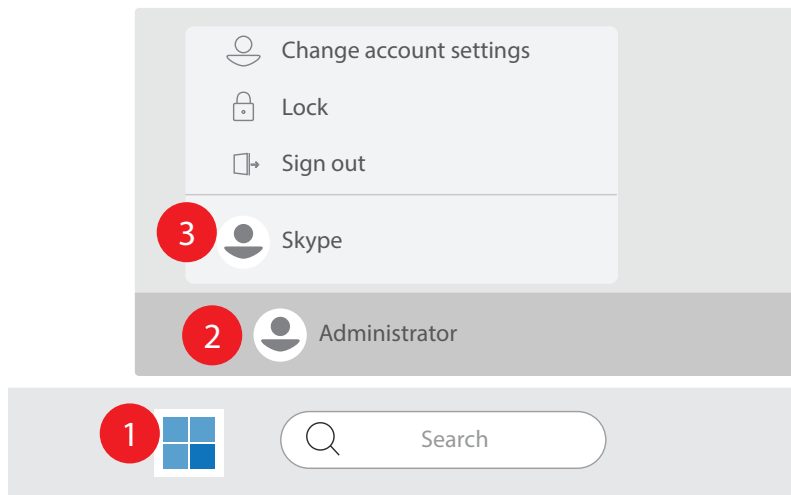
Confirm that you'd like to overwrite the db.json file if that file already exists.

The MAXHUB Plug-in should be successfully configured.

Once configured, check the *About* option in the MAXHUB Align application to see if there's a newer version of the MAXHUB Align application. If there is, then follow the options to download and install the newer version.

If there is a new update, the MAXHUB Align application will close automatically once updated.

Next, logout as an Administrator, and log back in as the Skype user to start the Microsoft Teams user interface.



**Figure 43:** To login as the Skype user, select the Windows icon (1), select the Administrator user (2) and then select Skype user (3).

## Troubleshooting Poly Studio Base Kit G9 Plus Room Controls

- If the Microsoft Teams Rooms Room Controls does not open the Room Control URL, confirm that the URL matches the Mira Portal Remote Control URL with the addition of *inara* that was saved in an earlier step.
- If the room controls button does not appear, ensure you installed the MAXHUB Plug-in as an administrator to ensure it is running as a background service is running. If necessary, re-install the MAXHUB Plug-in as an administrator.
- For other issues related to the MAXHUB Plug-in behavior, check with MAXHUB to see if there is a newer version of the MAXHUB Plug-in or MAXHUB Align applications.

For more information please contact Aveo Systems' Support Department at [support@aveosystems.com](mailto:support@aveosystems.com).

### About Aveo Systems

*Aveo Systems is a leading provider of intuitive and easy-to-use AV control solutions for audio, video, and collaboration, improving how systems are used and managed by customers worldwide. For contact information, see [AveoSystems.com/contact-us](https://AveoSystems.com/contact-us).*

Specifications subject to change without notice. Aveo Systems and the Aveo logo are registered trademarks. All other trademarks are the property of their respective owners.

DS-11183-001, Version: November 12, 2025