

Planar WallDirector Video Controller



Displays

Planar WallDirector Video Controllers presets can be recalled by Mira Connect™, Aveo Systems’ smart control appliance. Mira Connect communicates and controls the Planar Video Controller over a network connection.

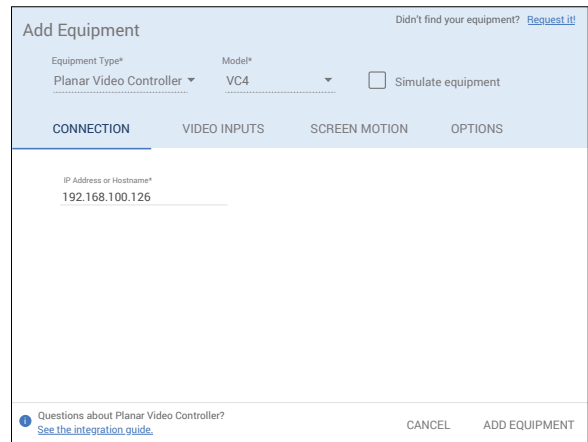
Follow these steps to integrate a Planar Video Controller with Mira Connect:

Step 1

Add the Planar Video Controller to the room

Add the Planar Video Controller to the room in Mira Portal (<https://mira.aveosystems.com>), and enter the IP address of the device as shown in the following figure.

If you don’t have a Planar Video Controller yet, you can enable ‘Simulate equipment’ and continue setting up the system and building the user interface.



Step 2

Enable Presets on the Controller

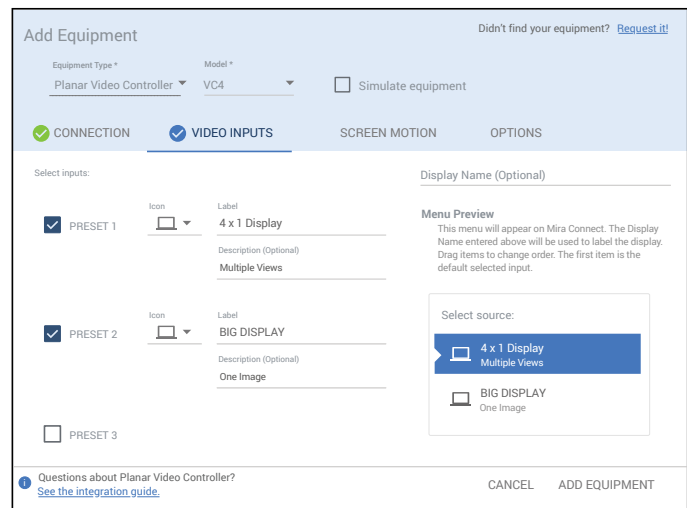
Navigate to the Video Inputs tab and specify which presets are used on the device. Up to 50 presets are available to choose from. The names of the presets defined in the Planar Video Controller will be shown when the presets are detected by Mira Connect.

Enable a preset, select an icon, and enter text labels for the desired preset. This will create a display menu as shown in the following figure.

The display menu will be built and previewed on the VIDEO INPUTS tab within Mira Portal. An optional display name may be entered which is useful if you have multiple displays or projectors in a room.

You can re-arrange the order of the items in the display menu by clicking and dragging an input in the Menu Preview.



Click **Add Equipment** when done to connect to the Planar Video Controller.



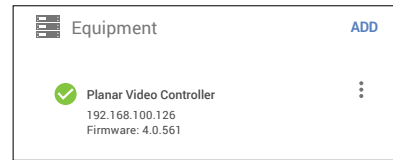
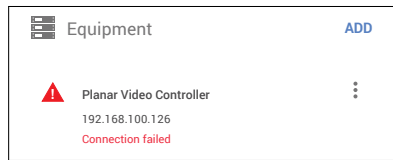
Step 3

Connect to the Planar Video Controller

Once the equipment is added, Mira Connect will connect to the Planar Video Controller and show the status of the connection.

Mira Portal will show the equipment status as a green circle, , if the IP address is valid and Mira Connect can communicate to the device, otherwise the warning symbol, , will appear indicating the IP address is not correct or Mira Connect does not have a network route to the

device.



See the [Mira Connect Administrators Guide](#) for more information about using Mira Portal to set up Mira Connect.

Important information about the integration is summarized below.

Control Interface

Network connection using TCP, port 57.

Set a static IP address, or use a 'reserved' lease on a DHCP server to ensure the IP address does not change over time.

Supported Control

Supports preset recall and power on/off.

Supported Models

Mira Connect supports the Planar WallDirector VC4 controller.

Troubleshooting

If the device shows a Connection failed message or isn't responding to commands, check:

- The IP address of the display matches the IP address entered in Mira Portal and that Mira Connect is on the same network or has a network route to the display.

For more information please contact our Sales Department at sales@aveosystems.com.

About Aveo Systems

Aveo Systems is a leading provider of intuitive and easy-to-use solutions for audio, video, and collaboration, improving how systems are used and managed by customers worldwide.

Specifications subject to change without notice. Aveo Systems and the Aveo logo are registered trademarks. All other trademarks are the property of their respective owners.



DS-11119-001
Version 20230103