

Integrating a Panasonic Projector with Mira Connect™

Panasonic Projectors can be controlled with Mira Connect™, Aveo Systems®' smart control appliance.

This integration guide provides detailed steps for configuring Mira Connect (using [Mira Portal](#)) to control the Panasonic Projector.

Mira Connect communicates and controls the Panasonic Projector over Ethernet or RS-232.



Figure 1: The Mira Connect AV control system controls thousands of devices, including Panasonic Projectors.

Important Information

NOTE: In newer firmware, Panasonic has set a default command control timeout of 0 seconds which will disconnect the projector's network interface after each command regardless of whether a password is set. To control the projector over Ethernet, first set the admin password to an empty string, and then confirm the Command control timeout is not set to 0 as follows:

- Press Menu on the projectors IR remote
- Go to Display Option
- Go to On-Screen Display
- On the Input Guide option press and hold the Enter Key for 3 seconds to enter the service mode.
- Go to Command Control Timeout and change the default time from 0 to 30 sec.
- Press Menu to Exit.

If these instructions aren't compatible with your projector, try these steps to set the timeout to 30s:

- Navigate the Menu to Projector Setup
- Select Service Password and enter 1565 as the password
- Go back to the main Menu and select the Extra option
- On the Time out menu, change the value to 30

Integration Steps

To integrate a Panasonic Projector with Mira Connect, follow these steps:

Step 1. Add a room to Mira Portal

To get started, create an organization, site, and room in [Mira Portal](#) if you don't already have a room. Follow the tutorial for creating a room after creating a Mira Portal account. There is no cost to creating a Mira Portal account.

Next, pair a Mira Connect to the room or use the *Preview Mira Connect in a web browser* feature.

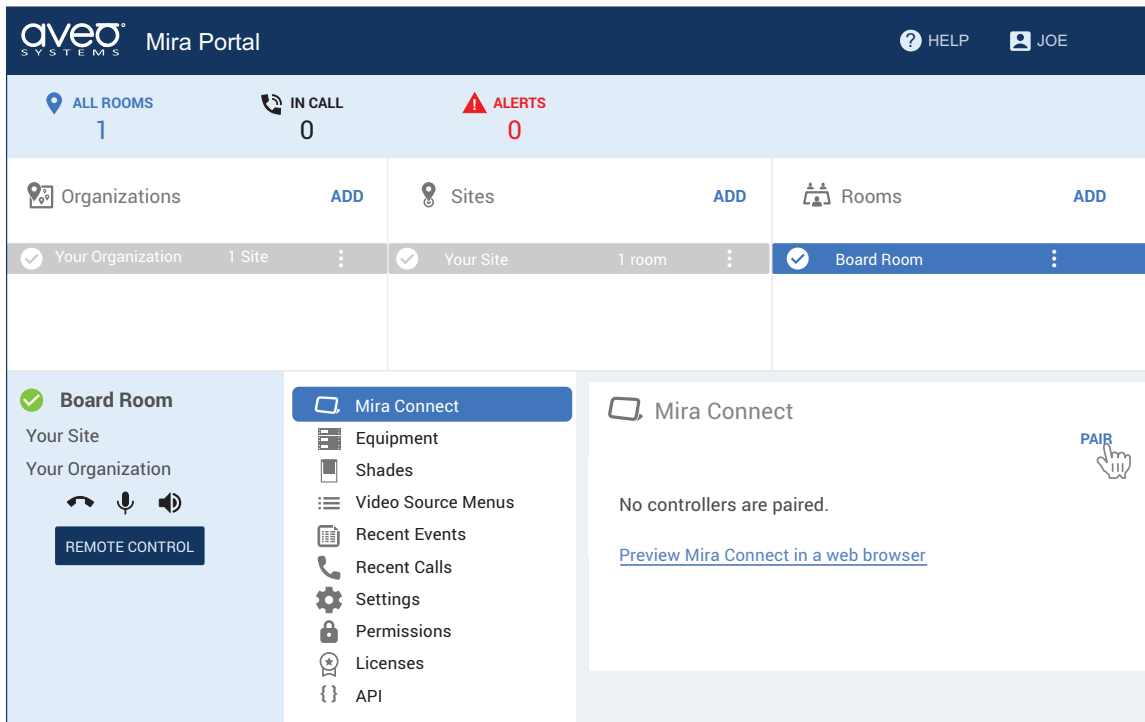


Figure 2: Create an organization, site, and room in Mira Portal and then pair the Mira Connect to the room.

Step 2. Pair Mira Connect to the room

If you have a Mira Connect appliance, connect it to the network and power it up. Mira Connect appliances can use a PoE network connection. *Mira Connect requires WAN access to pair with the room in Mira Portal.*

The *Preview Mira Connect in a web browser* feature opens a new browser tab and creates an interactive demo of the user interface before you have a Mira Connect or any equipment. The preview feature uses Mira Connect's built-in equipment emulators to create an interactive user experience before any equipment is purchased.

To pair a Mira Connect control system to your room:

- For Mira Connect appliances, select your language, network (wired or wireless), and then Mira Connect will show a pairing code. Enter the pairing code into Mira Portal to associate the Mira Connect with the room in Mira Portal.
- If you are using Mira Connect software, follow the instructions in the Mira Connect Software Quick Install Guide to install the Mira Connect software and get a pairing code.

The following figures show the pairing steps when using Mira Connect appliances.

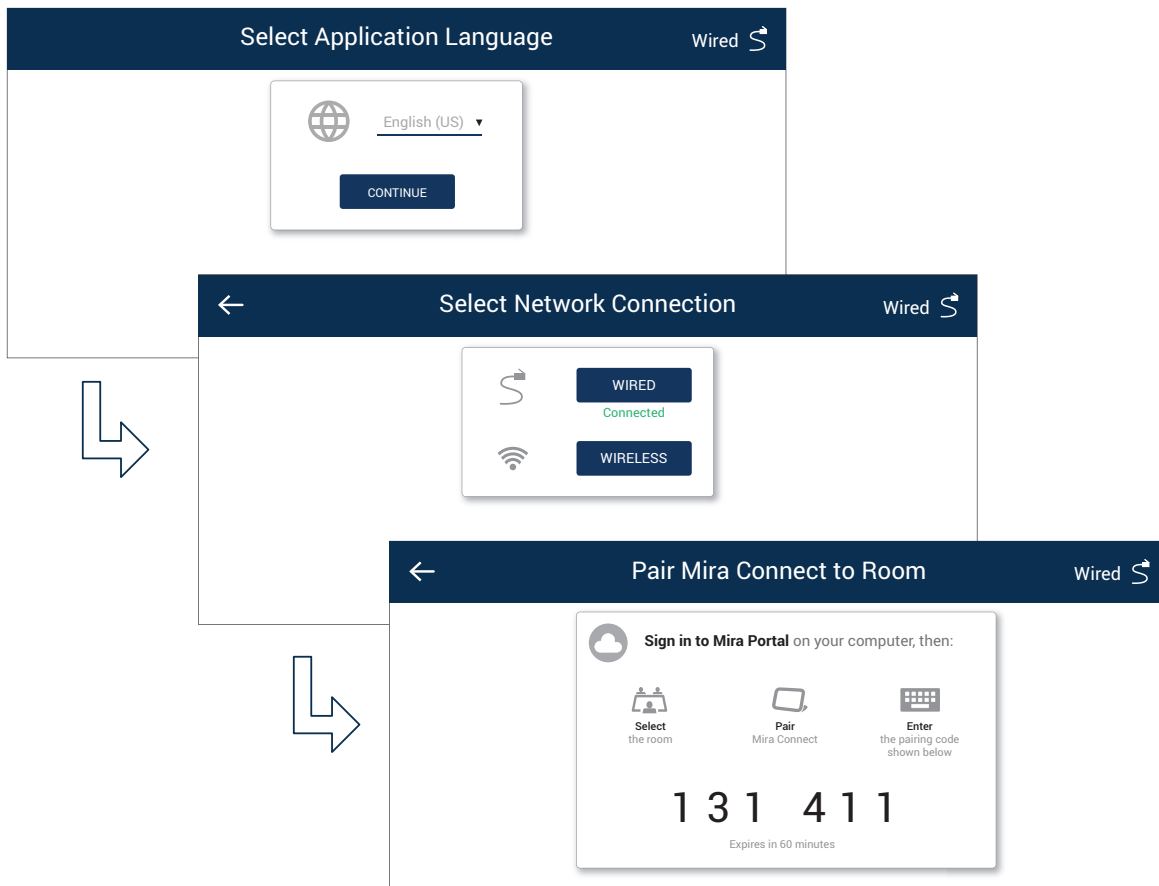


Figure 3: Select the language, select the network connection, and receive a pairing code.

Step 3. Add the Panasonic Projector

Add a Panasonic projector to the room by clicking ADD and select Panasonic Projector from the equipment list.

Step 4. Select Connection Type

For the Connection Type, select **Ethernet** or **RS-232 over Ethernet** depending on how Mira Connect will communicate with the projector.

Enter the projector's IP address (or the IP address of the Global Caché IP2SL if controlling over RS-232), and click 'Add Equipment'. Mira Connect will connect to the Panasonic system and show the status of the connection.

Ensure a password is not required by the projector for Ethernet control. While Mira Portal shows the password field, due to recent changes in behavior of Panasonic projectors, controlling the projector is not supported over Ethernet when a password is used.

Mira Portal will show the equipment status as a green circle if the IP address is valid and Mira Connect can connect and control the projector, otherwise the warning symbol will appear indicating the IP address is not correct, the RS-232 baud rate is not set correctly on the Global Cache IP2SL interface, or the device at that IP address is not a Panasonic projector.

If you haven't set the command control timeout to 30 as described previously, even with a green check mark, you will not be able to control the projector as it will drop the network connection after the Mira Connect has connected to it.

Add Equipment Didn't find your equipment? [Request it!](#)

Equipment Type* Select model number*

Panasonic Projector Universal Simulate equipment

CONNECTION VIDEO INPUTS SCREEN MOTION OPTIONS

Connection Type*

Ethernet

RS-232 over Ethernet

IP Address or Hostname*

192.168.80.165

Administrator Username

Administrator Password 👁

❗ Questions about Panasonic Projector?
[See the integration guide.](#)

CANCEL ADD EQUIPMENT

Figure 4: Select the connection type, and enter the IP address.

Step 5. Configure the video inputs

To specify which video inputs are used on the Panasonic Projector, select Edit from the device's menu, select the Video Inputs tab and enable an input, select an icon, and enter text labels for the desired inputs. This will create a display menu as shown in the following figure.

An optional display name may be entered which is useful if you have multiple displays in a room.

A display card and menu will not appear on Mira Connect until you have enabled at least one input on the display.

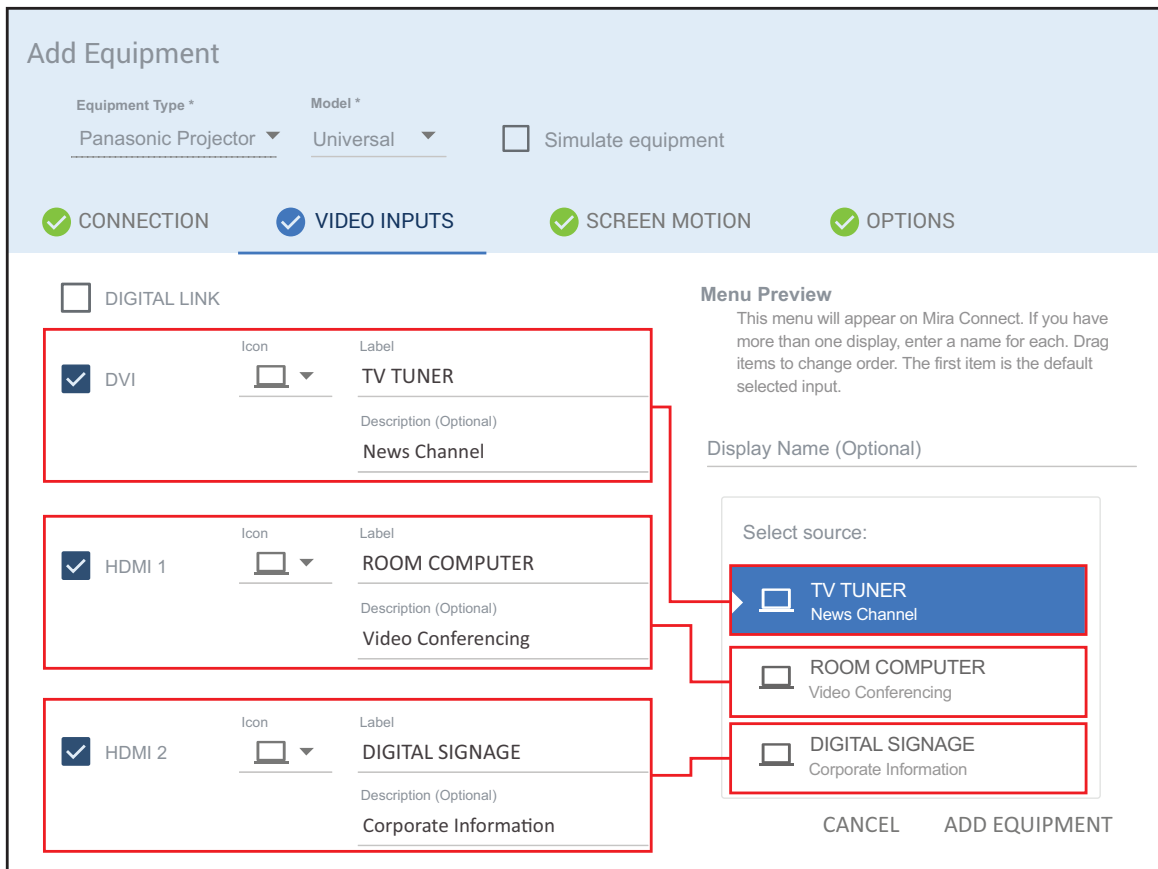


Figure 5: Enable the desired inputs on the Panasonic Projector.

If connecting the output from a video switcher or cable TV tuner to an input on the Panasonic Projector, click the link ‘Use Sources Connected to Other Equipment...’ and select where the source comes from.

Control Interface

Network connection using TCP port 1024.

When using the Global Caché IP2SL interface for serial control, see the [Global Caché Integration Guide](#) for how to configure the Global Caché IP2SL. Ensure the baud-rate on the Global Caché IP2SL (defaults to 19,200 bps) matches the baud-rate configured on the Panasonic Projector.

The default RS-232 settings for a Panasonic Projectors are 9,600 baud, no parity, 8 data bits, one stop bit, and no flow control.

Use a straight-through RS-232 cable as shown in the following figure(s).

The baud rate on the projector can be changed by navigating to the projector’s RS-232C menu.

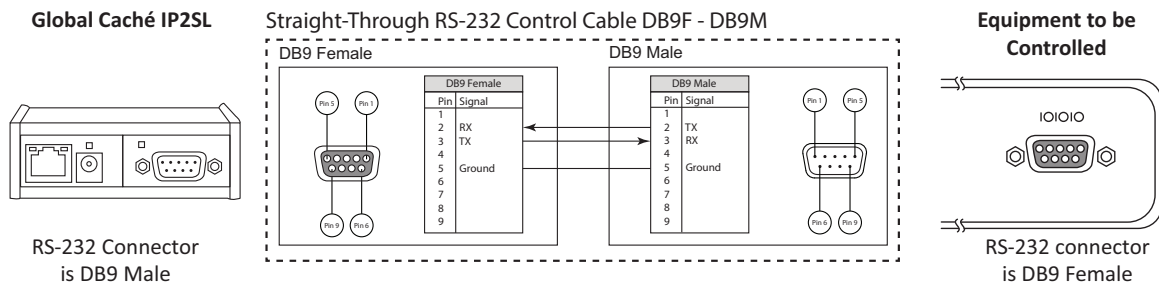


Figure 6: The RS-232 cable required to connect to a Panasonic Projector using RS-232.

Models Supported

Mira Connect supports the family of Panasonic projectors with a universal driver. Since not all inputs are available on all projectors, select the desired inputs and add labels as shown on the Display Menu section..

Version Tested

Tested with a Panasonic RW-330 with firmware v3.14 and VMZ50 running firmware v1.18.

Troubleshooting

If Mira Connect is not able to connect to the projector:

- Confirm that Mira Connect and the projector have IP addresses that are on the same subnet or are reachable on the same subnet if controlling the projector over Ethernet.
- If using a Global Cache IP-to-serial interface, confirm the IP address and baud rate and cable pin-out for RS-232 connections.
- If connecting over Ethernet, set the password to an empty password on the projector. A Panasonic projector operating over Ethernet when there is a password enabled will drop the network connection after each command. This is not supported by Mira Connect.
- In newer firmware, Panasonic has set a default command control timeout of 0 seconds which will disconnect the projector after each command regardless of whether a password is set or not. If connecting over Ethernet, confirm the Command control timeout is not set to 0 as follows:
 - Press Menu
 - Go to Display Option
 - Go to On-Screen Display
 - On the Input guide press and hold the Enter Key for 3 seconds to enter the service mode.
 - Go to Command Control Timeout and change the default time from 0 to 30 sec.
 - Press Menu to Exit.
- If these instructions aren't compatible with your projector, try these steps to set the timeout to 30s:
 - Navigate projector's menu to Projector Setup

- Select Service Password and enter 1565 as the password
- Go back to the main Menu and select the Extra option
- On the Time out menu, change the value to 30

For more information please contact our Sales Department at sales@aveosystems.com.

About Aveo Systems

Aveo Systems is a leading provider of intuitive and easy-to-use solutions for audio, video, and collaboration, improving how systems are used and managed by customers worldwide.

Specifications subject to change without notice. Aveo Systems and the Aveo logo are registered trademarks. All other trademarks are the property of their respective owners.

DS-11030-001, Version: July 14, 2023