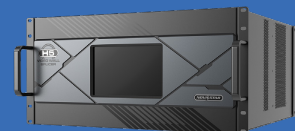


Novastar H-Series Video Processor

Displays



Novastar H-series video processors can be controlled by Mira Connect™, Aveo Systems’ smart control system. Mira Connect communicates and controls the Novastar H-series products over an RS-232 connection. Mira Connect supports recalling presets on the Novastar H-series products.

Follow these steps to integrate Novastar H-series products with Mira Connect:

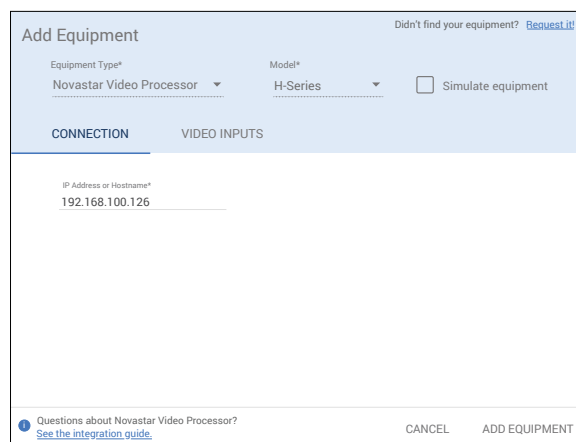
Step 1

Add the Novastar H-series device to the room

Add the Novastar H-series device to the room in Mira Portal (<https://mira.aveosystems.com>), and enter the IP address of the device of the Global Cache IP2SL interface as shown in the following figure.

If you don’t have a Novastar H-series device yet, you can enable ‘Simulate equipment’ and continue setting up the system and building the user interface.



Click Add Equipment to connect to the device and discover the presets.



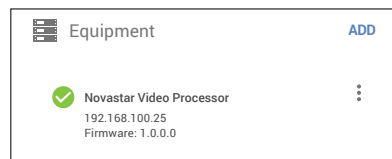
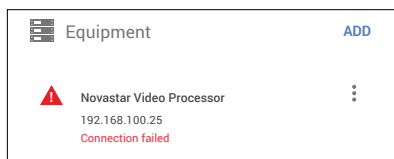
Step 2

Connect to the Novastar H-series device

Once the equipment is added, Mira Connect will connect to the Novastar H-series product and show the status of the connection.

Mira Portal will show the equipment status as a green circle, , if the IP address is valid and Mira Connect can communicate to the device, otherwise the warning symbol, , will appear indicating the IP address is not correct, the RS-232 cable or settings are not correct, or Mira Connect does not have a network route to the device.

See our troubleshooting steps in this document if you can’t connect to the device.



Step 3

Enable Presets in Mira Portal

Navigate to the Video Inputs tab and specify which presets are to be used on the device. Presets that have been defined in the device will be listed and shown with the names created in the device.

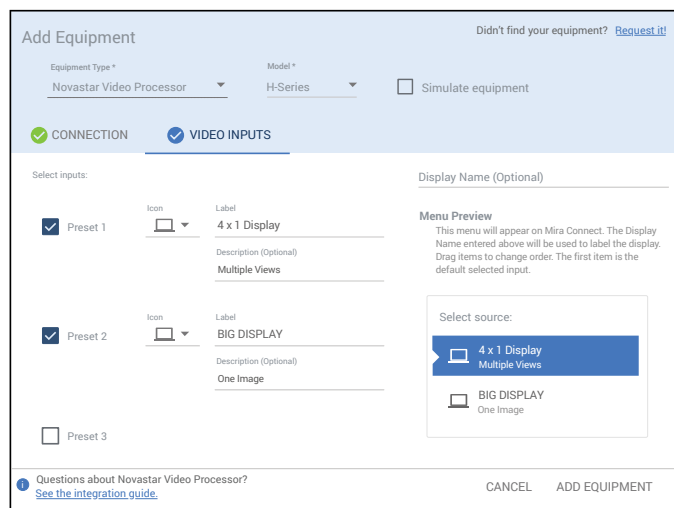
To create a display menu and display card for Mira Connect, enable at least one preset, select an icon, and enter text label and description for the desired preset as shown in the following figure.

The display menu will be built and previewed on the VIDEO INPUTS tab within Mira Portal. An optional display name may be entered which is useful if you have multiple displays or projectors in a room.

You can re-arrange the order of the items in the display menu by clicking and dragging an input in the Menu Preview.

Click **Update Equipment** when done to update the Mira Connect settings for to the Novastar H-series.

See the [Mira Connect Administrators Guide](#) for more information about using Mira Portal to set up Mira Connect.



Important information about the integration is summarized below.

Control Interface

Network connection using TCP, port 4999 when using the Global Cache IP2SL for RS-232 control.

When using the Global Cache IP2SL interface for serial control, see our Global Cache [integration guide](#). Ensure the baud rate on the Global Cache IP2SL matches the baud rate configured on the device. Since the default RS-232 settings for Novastar H-series is 115,200 baud, no parity, 8 data bits, one stop bit, and no flow control, you will need to change the baud rate on the Global Cache device to 115,200.

Follow the cable pinout recommend by Novastar to create the RS-232 cable.

Set a static IP address, or use a 'reserved' lease on a DHCP server to ensure the IP address does not change over time. See the Global Caché [integration guide](#) for how to change the baud rate and how to set a static IP address.

Supported Control

Supports preset recall.

Supported Models

Mira Connect supports the Novastar H-series video processors.

Troubleshooting

If the device shows a Connection failed message or isn't responding to commands, check:

- The IP address of the Global Cache IP2SL matches the IP address entered in Mira Portal and that Mira Connect is on the same network or has a network route to the Novastar device.
- Confirm the RS-232 cable pin-out and baud rate on the Global Cache device and Novastar device match. See our [RS-232 troubleshooting article](#) for additional details.

For more information please contact our Sales Department at sales@aveosystems.com.

About Aveo Systems

Aveo Systems is a leading provider of intuitive and easy-to-use solutions for audio, video, and collaboration, improving how systems are used and managed by customers worldwide.

Specifications subject to change without notice. Aveo Systems and the Aveo logo are registered trademarks. All other trademarks are the property of their respective owners.



DS-11122-001
Version 20230103