

# Mira Connect adds AV Controls to Poly TC10 and TC8 Touch Controllers



Poly's world-class video conferencing and collaboration solutions can be easily integrated with Aveo Systems' award-winning Mira Connect AV control system, allowing users to access the room's AV control directly from the Poly TC10 or TC8 touchscreen.



Users can swipe to access Mira Connect's controls directly from the Poly touchscreen

## Poly Touch Controllers Enhanced

Poly's TC10 and TC8 touch control products and video codecs support adding Mira Connect's remote control user interface directly to the panels.

Once configured on the Poly TC10 and TC8, users access the AV controls by swiping from the right of the screen and then selecting 'AV Control.'

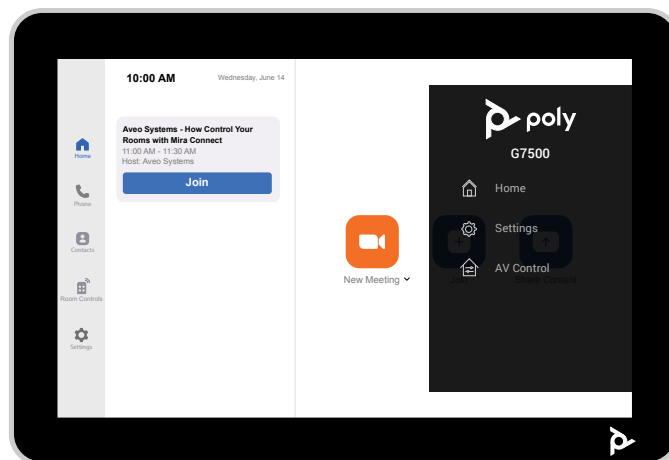
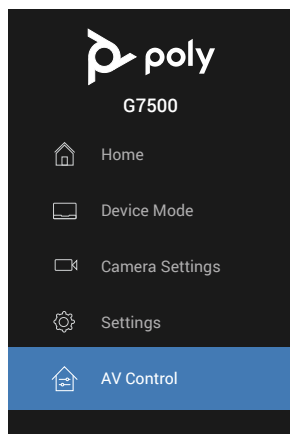
Users benefit from having only one touch panel in the room with the user interfaces for both video collaboration and the rest of the AV equipment in the room. As another benefit, Mira Connect's remote control feature allows AV/IT teams to manage the AV equipment remotely.

## Mira Connect UI available with all Provider Modes

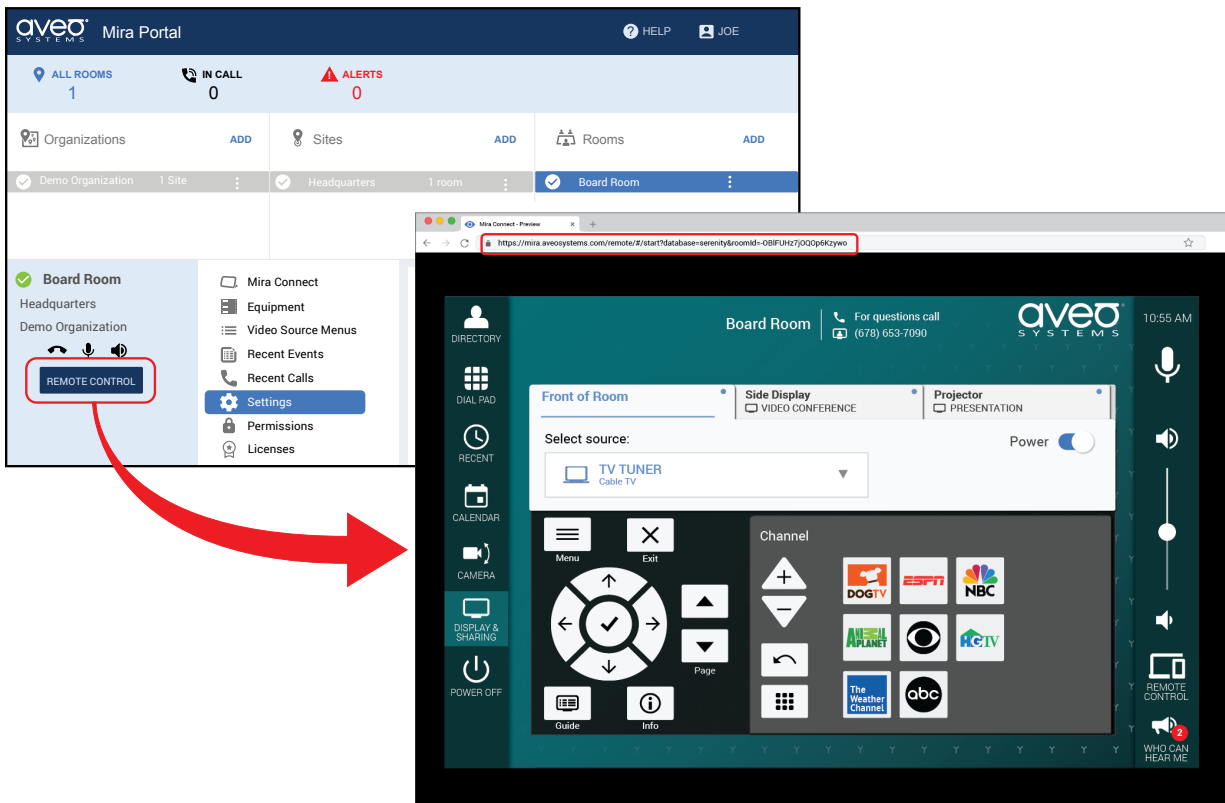
Poly video conferencing solutions natively support operating in Microsoft Teams, Zoom, Google Meet, and other modes. In different provider modes, the touchscreen's user interface provides a native user experience for each platform.

Regardless of whether the provider mode is Microsoft Teams, Zoom, Google Meet, Poly mode, or other, Mira Connect's AV Control user interface is available for an integrated room control experience directly from the touch controller.

To learn how to configure a Poly touch controller with Mira Connect controls, see our knowledge base [article](#).



Room controls are available by accessing the AV Control item from the Poly touchscreen, regardless of the selected meeting provider.



*Mira Connect's remote control user interface is available in a browser for remote AV/IT support and is also used with the Poly Touch control solutions.*

## Mira Connect is the AV Control System

Available as an all-in-one touchscreen appliance or as a software application for Windows 10 or newer PCs, Mira Connect has built-in support for thousands of AV products from leading manufacturers. No programming is required to set up and use the system. Mira Connect generates a professional user interface based on the equipment selected to control.

Mira Connect Software can run on a PC in the room, or it can run on a virtual Windows image from a server on the network.

Users get intuitive control of their video conferencing systems, displays, video switchers, cameras, TV tuners, DSP audio systems, lighting, shades, and more. And the system can be managed remotely.

Mira Connect's remote control user interface is accessed from Mira Portal, the cloud management and configuration platform. The URL is used to configure the Poly TC10 and TC8 touch panels.

For a demonstration of the Mira Connect user interface, see our demo at <https://aveosystems.com/demo>.

### Tired of Your Legacy Control System?

Use Mira Connect software's application programming interface (API) to easily add new features to your existing programmable system. Or just replace your legacy system with Mira Connect.

## Mira Connect is Easy to Set Up

Mira Connect reduces programming time and effort because we've already done the programming for you. Through Mira Portal, you can set up the control for displays, cameras, audio DSP audio devices, video switchers, and a lot more — with just a few clicks of your mouse.

Select the equipment to control, enable inputs and outputs, customize labels, add the room's calendar, add a contact directory, set up password protection, and enable many other useful features!

Need to make changes in the future? It's easy to update your control system from anywhere through Mira Portal.

### Remote Management

Using Mira Portal™ (Mira Connect's management platform), AV/IT support teams can oversee their Mira Connect control systems from anywhere.



### Remote Control

Your help desk personnel can access the room's user interface from any browser.

### Equipment Status Notifications

Know immediately when equipment goes offline — well before the big meeting starts or class begins.