

Mira Connect Integration

Just Add Power AMP-Configured

Video Switcher



Just Add Power transmitter- and receiver-based video switching system configured with Just Add Power's AMP software can be controlled with Mira Connect™, Aveo Systems' smart control appliance.

For Just Add Power systems configured with JADConfig, see our [Just Add Power JADConfigured integration guide](#).

Control Interface

The Just Add Power transmitters and receivers are controlled through an ever-growing set of supported [Just Add Power switches](#) using telnet (port 23).



Mira Connect **must have a static route set on the A/V network to the IP address range of decoders** as described in Just Add Power's [support note](#).

Without this static route, Mira Connect will not be able to control the system.

Functionality Supported

Mira Connect supports video switching audio and video together when Just Add Power's AMP software to configure the network switch.

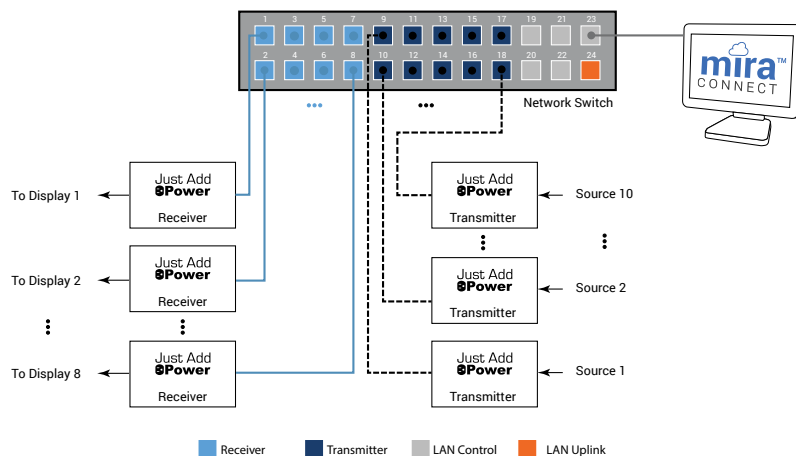
Models Supported

Just Add Power 2G Omega, 3G Ultra, and MaxColor Transmitters and Receivers alongside any switch supported by Just Add Power AMP VLAN.

Software Versions

Tested with Luxul 4424P.

Integration Steps



Example single-switch network connections for a Just Add Power AMP-configured system with 10 transmitters (dashed lines) and 8 receivers (solid lines).

Step 1

Run the AMP software and configure the network switch

To integrate the Just Add Power transmitters and receivers with Mira Connect, first set up the network switch using Just Add Power's [AMP](#) software and connecting the Just Add Power transmitters and receivers to the network as described by [Just Add Power](#).

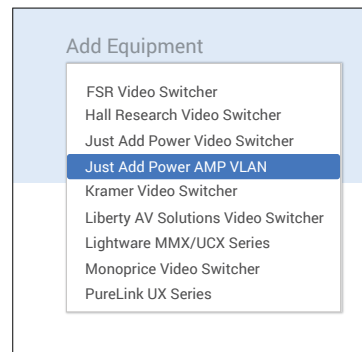
Next, follow these steps to integrate the system with Mira Connect. For more information on creating rooms and adding equipment in Mira Portal, see our [training videos](#).

Step 2

Add the Just Add Power system to the room in Mira Portal

Add a Just Add Power system to the room in Mira Portal (<https://mira.aveosystems.com>).

Enter the IP address of the first decoder. In this example the IP address is 172.27.1.1.



Note that this is not the IP address of the network switch as is used with JADConfig-configured systems.

Mira Connect supports any switch supported by Just Add Power's AMP software as Mira Connect communicates directly to the Just Add Power decoder.

If you are configuring the control system before you have Just Add Power transmitters and receivers, select 'Simulate equipment' to continue.

Mira Connect includes a full simulator of Just Add Power AMP-based system where the simulated system is defined with 8 transmitters and 16 receivers.

Note: Before you can configure the video inputs and outputs, add the Just Add Power system by clicking 'Add Equipment'. Mira Connect will then discover the transmitters and receivers connected to the network.

Prior to detecting the inputs and outputs, the Video Inputs tab will show that you need to connect to the equipment to detect available inputs as shown in the figure to the right.

Step 3

Confirm Connection to the Network Switch

Click 'Add Equipment' to add the video switcher to the room.

If Mira Connect cannot connect to the network switch, the message: **⚠ Connection failed** will appear as shown in the figure on the right.

To resolve a connection issue, edit the device (by clicking the **⋮** icon to the right on the device name) and confirm the IP address. Ensure that the Mira Connect device is on the same network or has a network route to the equipment to be controlled.

If Mira Connect is on a wireless network, confirm it has a route to the switcher's network.

Mira Portal will show the equipment status as **✅** once the Just Add Power Video Switcher has been confirmed at the specified IP address.

Step 4

Enable and Label the Transmitters/Inputs

After waiting a few seconds after clicking Add Equipment, edit the device by clicking the **⋮** icon to the right on the device name in Mira Portal. If using simulated equipment, the simulator creates a 8 input x 16 output matrix.

Select the Video Inputs tab, enable the desired video inputs by checking the box next to each input.

The detected inputs are shown, numbered from 1 to the maximum number of transmitters that were discovered.

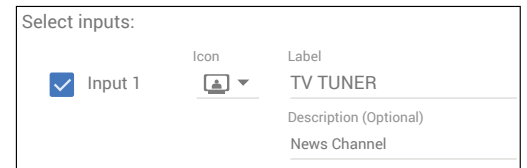
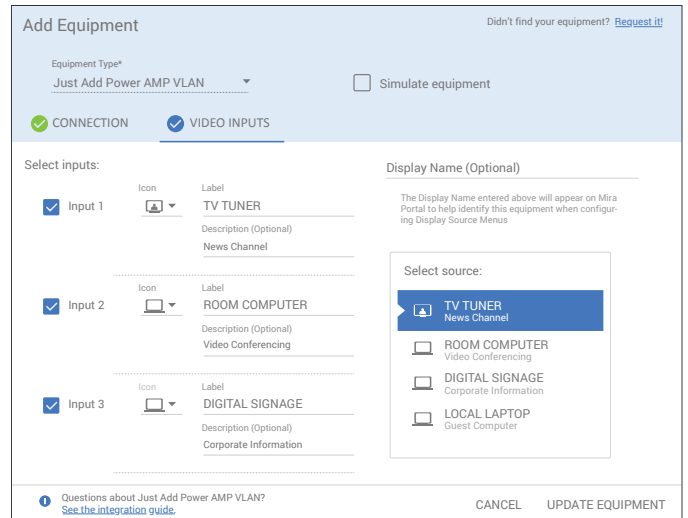
After clicking the enable box next to a transmitter, select an icon, and enter a label and an optional description for

each input. The labels and descriptions will appear on Mira Connect’s display menu for users to see. Enter a label and description that will be meaningful for your end users, such as “Blu-ray Player” or “Room Computer”.

You can also name the video switcher by adding an optional label to the Display Name field. This is useful when you have multiple video switchers in the same room.

In this example, the video inputs Input1, Input 2, Input 3, and Input 4 are enabled and labeled as “TV Tuner”, “Room Computer”, “Digital Signage”, and “Local Laptop”, respectively. The optional description field allows you to add more information to help end users.

Scroll, as necessary to enable and label the desired inputs. If you’ve configured the system for more inputs/outputs than are physically in your system, you can leave the unused inputs unchecked so they don’t appear on the video selection menu for end users.



Step 5

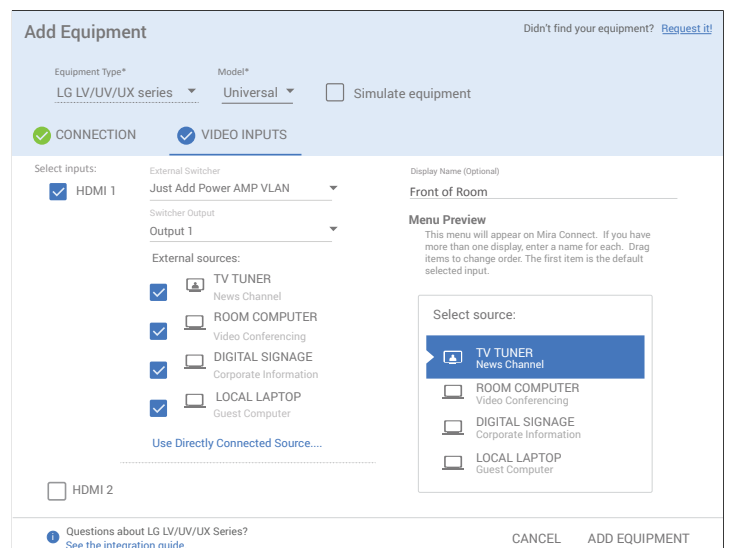
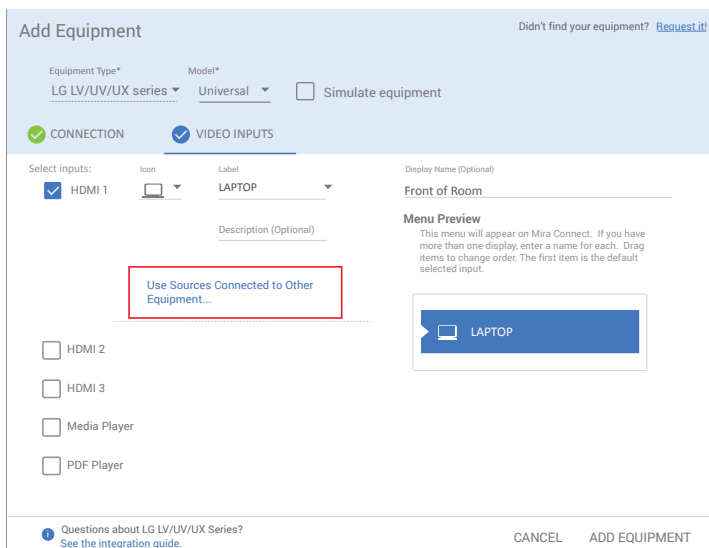
Connect Receivers/Outputs to Displays

When connecting a receiver to a display or other device, add the display to your room (in this case, an LG LV/UV/UX series display), and edit the display’s Video Input tab.

Enable an input on the display and select ‘Use Sources Connected to Other Equipment’, as shown in the following figures.

Next, select the Just Add Power AMP-configured video switcher and select the desired output (Output 1 in this example is the first receiver) from the video switcher that is connected to the display’s input as shown in these figures.

Continue assigning outputs to other displays in the system using the same steps as shown above.

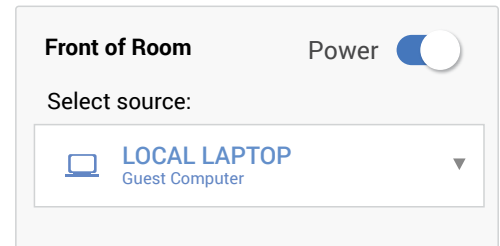


You can provide an optional name for each display to help end users identify which display they are switching sources on. In this example the display is called 'Front of Room'.

Each display's source selection menu shown on Mira Connect will show the inputs from the video switcher that the user can select from. If you don't want all the available inputs to be routed to that particular output, you can remove specific inputs from being routed to the display by unchecking the external sources that are available. For example, unchecking LOCAL LAPTOP would remove that option from the display's source selection menu.


The order of the display's menu items may be changed by clicking and dragging the menu items in the Menu Preview window in Mira Portal.

The display menu for the LG display will appear on Mira Connect as in the figure on the right. Selecting an input will automatically cause the system to switch inputs to the selected output and also ensure the display is powered on and set to HDMI 1 (in this example, since we assigned the video matrix output to input HDMI 1 on the LG display).

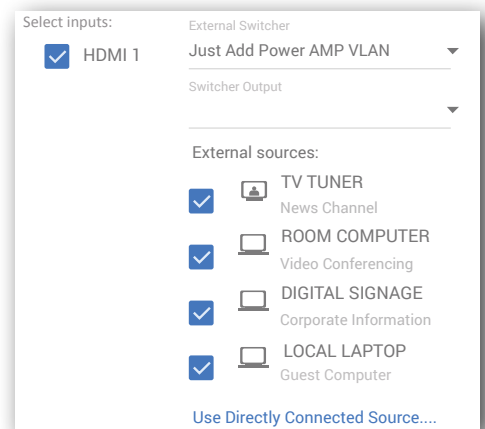
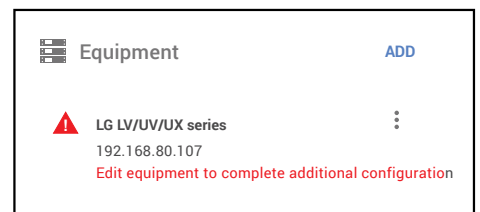


Changing the Number of Outputs / Receivers

After a system has been set up, if the number of receivers or transmitters change due to adding or removing equipment from the network, Mira Connect will provide a visual warning when inputs or outputs that were once used are no longer available.

Outputs that were once mapped to a display, but are no longer available, will be highlighted by a warning icon, , next to the display as shown in the figure to the right.

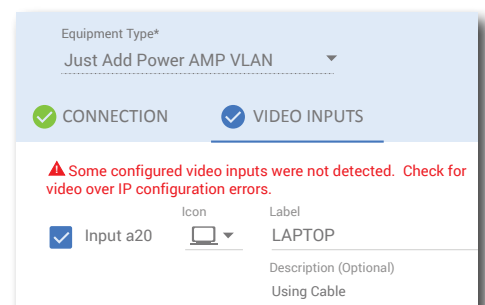
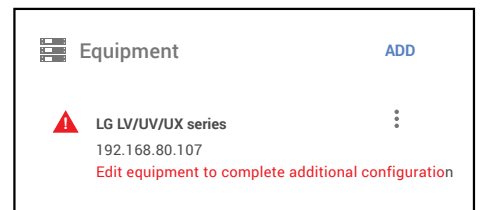
To resolve this issue, edit the display and select a valid output channel for *Switcher Output* as the value will be empty if the previous value no longer exists. Select a valid output, click Update Equipment, and the warning will be resolved.



Changing the Number of Inputs / Transmitters

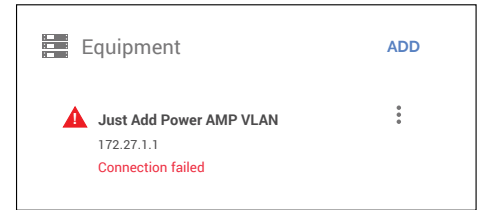
Inputs that were once used on the system, but are no longer available, will result in warning messages on the Video Source Menu in Mira Portal with a message that the inputs are no longer detected as shown on the Just Add Power Video Inputs tab.

Invalid inputs will be grayed out on display's source selection menus. To resolve this issue, uncheck the no longer recognized input from the Just Add Power Video Inputs tab. Once the input has been unchecked, the warning will be resolved and the input removed from the source selection menus.



Troubleshooting

- If Mira Connect cannot connect to the IP address of the decoder, confirm the IP address of the decoder is correct and confirm that Mira Connect has a static route to the video switcher as described in [Just Add Power's tech note](#).
- Without a static network route on the local AV network to the network switch used for the transmitters and receivers as described in detail by Just Add Power, Mira Connect will not be able to connect to the system.



For more information please contact our Sales Department at sales@aveosystems.com.

About Aveo Systems

Aveo Systems is a leading provider of intuitive and easy-to-use solutions for audio, video, and collaboration, improving how systems are used and managed by customers world-wide.

Specifications subject to change without notice. Aveo Systems and the Aveo logo are registered trademarks. All other trademarks are the property of their respective owners.



DS-11129-001
Version 20230324