

Sharing Wireless and Wired Ethernet Networks with Mira Connect™

Mira Connect™ is a tabletop touch interface for conference rooms, huddle rooms, offices, and other collaboration spaces. Mira Connect makes it easy for users to join audio and video conference calls and connect to their meeting. Simply. Every time.

Mira Connect can use its wired or wireless Ethernet connections to control equipment on the local area network (LAN) and to communicate with the Mira Portal™ cloud management server on the wide area network (WAN).

While Mira Connect is easily demonstrated in a hotel, or other venue, using simulated equipment with Open or WPA2 encrypted Wi-Fi networks, demonstrations where wireless networks require 'accepting' a terms of service agreement or when it's necessary to control equipment on a wired LAN while Mira Portal is only accessible via Wi-Fi requires sharing your computer's wireless interface with your wired Ethernet interface. This network sharing configuration, along with the network equipment listed above, allows Mira Connect to connect to the LAN for the local equipment management and to the WAN for Mira Portal access.

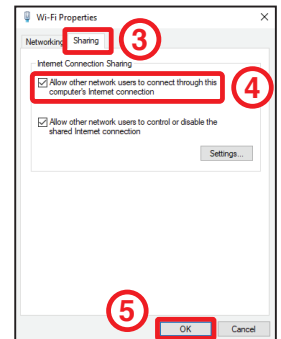
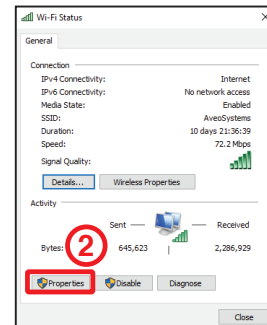
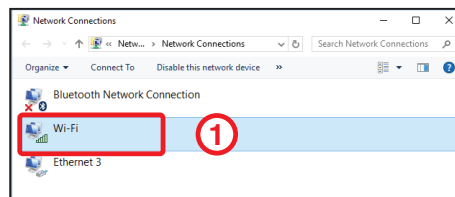
Equipment Needed

- PC with wired and wireless Ethernet connections
- Network router with DHCP
- PoE network switch
- Ethernet cables

Sharing Network Interfaces on a Windows® PC

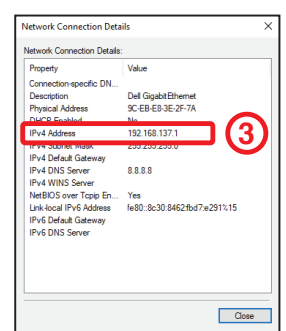
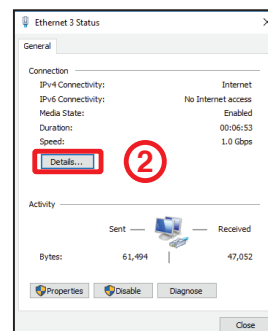
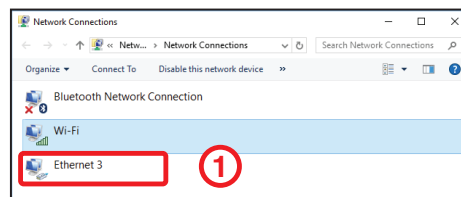
To share the Wi-Fi interface to the wired Ethernet interface follow these steps. Your wired ethernet interface should be set to automatically get an IP address.

1. Open your network connections on your PC and double click on the Wi-Fi network.
2. On the network status page, select **Properties**.
3. Select the **Sharing** tab.
4. Enable **Internet Connection Sharing**.
5. Click **OK**.



To confirm network sharing is operational:

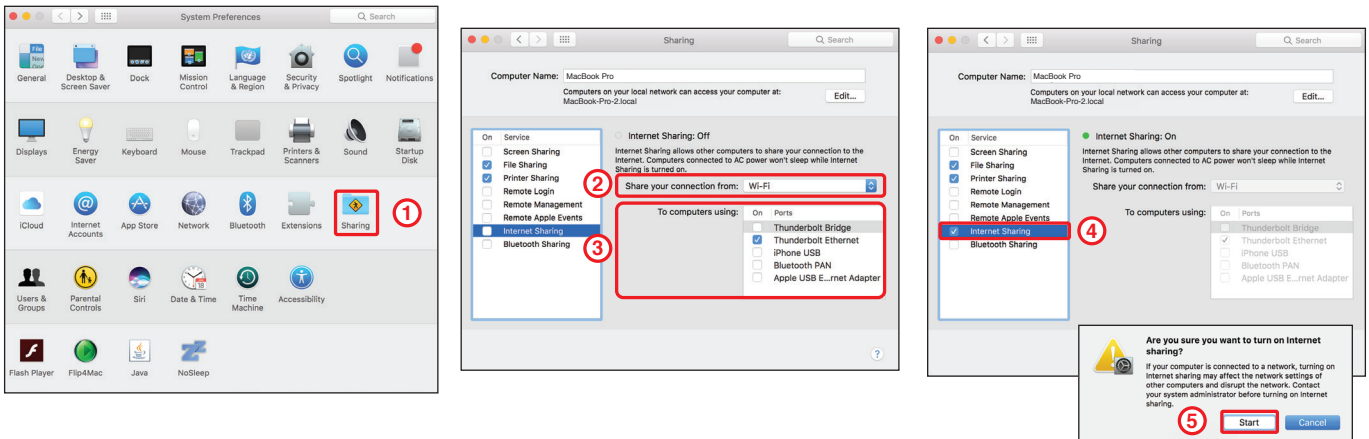
1. Open your network connections page on your PC and double click on the Ethernet network.
2. Select Details on the properties page.
3. Confirm there is an IP address for the Ethernet interface.



Sharing Network Interfaces on a Mac

To share the Wi-Fi interface to the wired Ethernet interface on a Mac follow these steps as shown in the following figure:

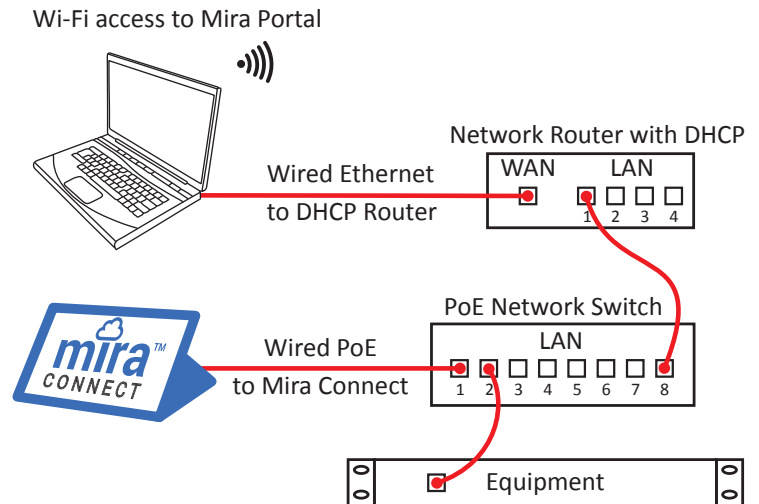
1. Open System Preferences and select **Sharing**.
2. On the Sharing page, select the Wi-Fi connection to share
3. Select the wired Ethernet interface that will use the Wi-Fi connection, in this example **Thunderbolt Ethernet**.
4. Enable Internet Sharing.
5. On the 'Are you sure' dialog box, select **Start** to start sharing.



Network Connections

Once the network interfaces are shared on your PC, cable the network as follows:

- The wired Ethernet connection from the PC is connected to the WAN interface on the Network Router.
- The router provides DHCP IP addresses to equipment and to Mira Connect. When using static IP addresses on the equipment, ensure the router's IP address is used as the gateway address.
- Connect one of router's LAN ports to a port on the PoE network switch.
- Connect the Mira Connect and equipment to the PoE network switch.



Once the PC network interfaces are shared and the equipment connected to the network, connect your computer to the Wi-Fi network and follow the instructions from the [Mira Connect Quick Start Guide](#) to setup Mira Connect with the IP addresses and control points of the equipment on the local network.

About Aveo Systems

Aveo Systems is a leading provider of intuitive and easy-to-use solutions for audio, video, and collaboration, improving how systems are used and managed by customers world-wide.



Aveo Systems, Inc.
 Phone: +1.678.653.7090
 Fax: +1.844.fax.aveo (844.329.2836)
 Email: info@aveosystems.com
www.aveosystems.com

Aveo Systems, the Aveo Systems logo, Mira, Mira Connect, and Mira Portal are trademarks for Aveo Systems Inc. All other marks are registered by their respective owners. Information subject to change without notice.